



### **Science Arts & Métiers (SAM)**

is an open access repository that collects the work of Arts et Métiers Institute of Technology researchers and makes it freely available over the web where possible.

This is an author-deposited version published in: <https://sam.ensam.eu>  
Handle ID: [.http://hdl.handle.net/10985/10116](http://hdl.handle.net/10985/10116)

#### **To cite this version :**

Shengyong PANG, Koji HIRANO, Rémy FABBRO, Tao JIANG - Explanation of penetration depth variation during laser welding under variable ambient pressure - Journal of Laser Applications - Vol. 27, p.022007 - 2015

Any correspondence concerning this service should be sent to the repository

Administrator : [scienceouverte@ensam.eu](mailto:scienceouverte@ensam.eu)



# Explanation of penetration depth variation during laser welding under variable ambient pressure

Shengyong Pang<sup>a)</sup>

*State Key Laboratory of Material Processing and Die and Mould Technology, Huazhong University of Science and Technology (HUST), Wuhan 430074, China*

Koji Hirano

*Nippon Steel & Sumitomo Metal Corporation, 20-1 Shintomi, Futtsu, Chiba 293-8511, Japan*

Remy Fabbro

*PIMM Laboratory (ENSAM-CNRS-CNAM), 151 Boulevard de l'Hôpital, 75013 Paris, France*

Tao Jiang

*State Key Laboratory of Material Processing and Die and Mould Technology, Huazhong University of Science and Technology (HUST), Wuhan 430074, China*

It has been observed that the penetration depth during laser welding (LW) under vacuum or reduced ambient pressure could be significantly greater than that during welding under atmospheric pressure. Previous explanations of this phenomenon usually limit to specific wavelength laser welding and have difficulties in explaining why the variation will disappear, as the welding speed increases. Here, we propose that this variation is caused by the temperature difference of keyhole wall under variable ambient pressure based on a correct physical description of related processes. A new surface pressure model, dependent on ambient pressure, is proposed for describing the evaporation process during laser material interaction under variable ambient pressure. For laser welding of a 304 stainless steel with 2.0 kW laser power and 3 m/min welding speed, it is shown that the average keyhole wall temperature is around 2900 K under atmospheric pressure, and only around 2300 K under vacuum, which results in significant penetration depth variations. Interestingly, it is also shown that as the welding speed increases, the average temperature of the front keyhole wall gradually rises due to the reduction of the mean incident angle of laser, and the magnitude of this increase is larger in welding under vacuum than under atmospheric pressure. It allows us to explain why the penetration depth improvement decreases to zero with the increase of welding speed.

Key words: laser welding, ambient pressure, penetration depth, keyhole wall temperature

## I. INTRODUCTION

Deep penetration laser welding (LW) is a very important joining process in industries, such as aeronautical, shipbuilding, and nuclear industries.<sup>1</sup> As compared to electron beam welding (EBW), the penetration depth of LW is usually small under the same heat input condition.<sup>2</sup> Recently, owing to the development of high power and high brightness lasers, such as fiber or disk lasers, it has been demonstrated that when putting the LW machine under a lower or vacuum ambient pressure environment, the penetration depth of LW could be significantly increased to a level comparable to that of EBW in low welding speed conditions.<sup>3-5</sup> Besides, in reduced pressure LW process, no strict shielding apparatus is needed to protect the harmful X-ray radiations featured by EBW.<sup>3-5</sup> Consequently, LW under reduced pressure is considered to be a promising joining method

for welding heavy thick materials in industrial applications.

Physical explanation of penetration depth improvement in laser welding under reduced pressure can date back to 20 years ago. It was first explained by the inverse bremsstrahlung (IB) effect of plasma plume induced by CO<sub>2</sub> laser welding process that could be significantly decreased, when the welding environment is changed from atmospheric pressure to high vacuum.<sup>6</sup> However, this explanation cannot be applied to short wavelength fiber or disk LW processes, in which the ionization of high temperature vapor plume is small (typically < 5%) and, as the laser wavelength is ten times shorter, the IB effect can be reasonably neglected.<sup>7</sup> Recently, it was proposed that the penetration depth variation is caused by the difference in the magnitude of friction force on melt induced from uprising metallic vapor jet.<sup>8</sup> However, either this or IB effect explanation has difficulties in answering why this penetration depth improvement gradually disappears, as the welding speed, one of the most important process factors, increases.

<sup>a)</sup>Electronic mail: spang@hust.edu.cn

In this paper, we propose that penetration depth variation in laser welding under variable ambient pressure can be explained by the temperature evolution of keyhole wall. This new explanation is simple but rather general. It well supports both long and short wavelength LW literature reports, including CO<sub>2</sub>, Nd:YAG, and fiber welding experiments. Besides, it can well explain the observed penetration depth variation versus welding speed during LW process under variable ambient pressure.

## II. THEORY

Before starting to theoretically analyze the LW process, we first formulate an improved theoretical model for recoil pressure, the driving force for gaining the penetration depth, for LW under variable ambient pressure based on recent experimental observations. The concept of recoil pressure, first proposed by Anisimov 50 years ago,<sup>9</sup> has been widely used for mechanism explanation and theoretical modeling of laser material processing.<sup>10–19</sup> However, this widely applied model has been rested on an assumption that the ambient gas does not influence the evaporation process in laser material interaction. With this model, the recoil pressure is expressed as

$$p_r(T_s) = \frac{1 + \beta_R}{2} p_0 \exp\left(\frac{\Delta H_v}{k_B T_v} \left(1 - \frac{T_v}{T_s}\right)\right), \quad (1)$$

where  $T_v$  is the boiling temperature under the atmospheric pressure  $p_0$ , the coefficient  $\beta_R$  represents the fraction of recondensation particles to evaporations ones, and

$$\Delta H_v = mL_v, \quad (2)$$

is the enthalpy of phase transition during vaporization ( $m$  is the mass per atom and  $L_v$  is the latent heat of vaporization). This assumption is only applicable in a context, where the ambient environment is vacuum, or the recoil pressure is high enough to expel out all the surrounding gas atoms from the evaporation interface. However, this is not always true in LW process, since LW is usually performed under atmospheric pressure. Therefore, Knight<sup>20</sup> modeled the evaporation process and the resulting flow under an ambient pressure, but only when the resulting recoil pressure is greater than the ambient one.

Recent experiments have shown that the ambient pressure can confine metallic vapor, when the temperature of evaporation surface is lower than or around the boiling point, resulting in an increase of the recombination rate  $\beta_R$  in Eq. (1).<sup>21</sup> Moreover, it was also demonstrated that strong evaporation occurs in laser welding, only when the temperature of irradiated surface exceeds the boiling point of material.<sup>21</sup> Bearing these facts in mind, an improved model of recoil pressure for LW process under any ambient pressure  $p_{amb}$  can be proposed, as shown in Fig. 1. For a given ambient pressure  $p_{amb}$ , we will consider that the surface pressure  $p_s(T_s)$  will be controlled and equal to  $p_{amb}$  if the surface temperature is lower than the evaporation temperature  $T_{vb}$  corresponding to  $p_{amb}$ . For higher surface temperatures, the surface pressure will be given by the modified Clausius–Clapeyron equation defined by Eq. (1). That is

$$p_s(T_s) = \begin{cases} p_{amb} & 0 \leq T_s < T_{vb}, \\ \frac{1 + \beta_R}{2} p_0 \exp\left(\frac{\Delta H_v}{k_B T_v} \left(1 - \frac{T_v}{T_s}\right)\right) & +\infty > T_s \geq T_{vb}, \end{cases} \quad (3)$$

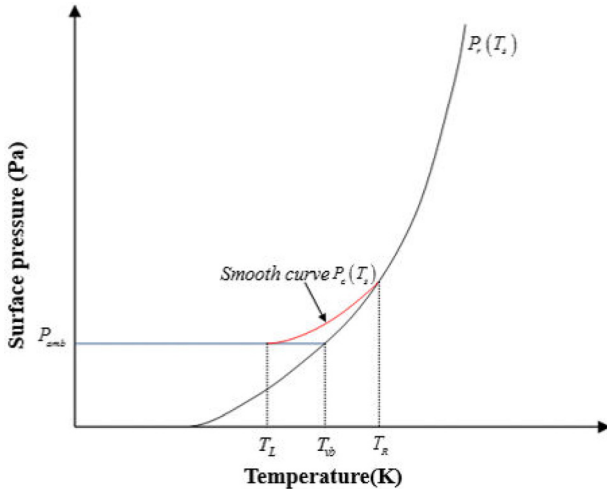


FIG. 1. The schematic of the surface pressure model dependence with surface temperature.

where  $p_s(T_s)$  is called surface pressure which is applied to the metal surface in the improved model of recoil pressure,  $T_{vb}$  is the intersection point of the two curves  $p_s(T_s) = p_{amb}$  and  $p_s(T_s) = [(1 + \beta_R)/2]p_0 \exp\{(\Delta H_v/k_B T_v)[1 - (T_v/T_s)]\}$ , i.e.,  $T_{vb}$  is the solution of the equation  $[(1 + \beta_R)/2]p_0 \exp\{(\Delta H_v/k_B T_v)[1 - (T_v/T_{vb})]\} = p_{amb}$ . In order to avoid the discontinuity of slopes at  $T_{vb}$ , we introduce a smooth curve  $P_c(T_s)$  on the range of temperature  $(T_L, T_R)$  around  $T_{vb}$ . The smooth curve  $P_c(T_s)$  (for  $T_L \leq T_s < T_R$ ) is described by a cubic polynomial, as follows:

$$p_c(T_s) = aT_s^3 + bT_s^2 + cT_s + d, \quad (4)$$

where the coefficients  $a, b, c, d$  and the temperature of intersection point  $T_L, T_R$  are all shown in Table I for 304 stainless steel under 0.5, 1.0, and 2.0 bars ambient pressure. It is remarked that the above smoothing ensures the continuity of slopes of the curve at  $T_L$  and  $T_R$ , and only affects a range of temperature  $(T_R - T_L)$  that represents about 10% of  $T_{vb}$ .

TABLE I. The parameters of surface pressure model for laser welding of stainless steel under variable ambient pressure.

Pressure	0.5 bars	1.0 bars	2.0 bars
$T_L$	2900.00 K	2950.00 K	3050.00 K
$T_R$	3400.00 K	3600.00 K	3900.00 K
$T_{vb}$	3059.90 K	3218.16 K	3393.95 K
$a$	$5.87 \times 10^{-4}$	$9.88 \times 10^{-4}$	$1.36 \times 10^{-3}$
$b$	-4.78	-8.63	-12.47
$c$	$1.29 \times 10^4$	$2.51 \times 10^4$	$3.80 \times 10^4$
$d$	$-1.15 \times 10^7$	$-2.43 \times 10^7$	$-3.83 \times 10^7$

From the numerical experiences, it is also found that the simulations results are not so sensitive to the extension of this range when it is limited to about 10% of  $T_{vb}$ .

According to aforementioned discussions, the new surface pressure model with smooth transitions can be expressed as

$$p_s(T_s) = \begin{cases} p_{amb} & 0 \leq T_s < T_L \\ \frac{1 + \beta_R}{2} p_0 \exp\left(\frac{\Delta H_v}{k_B T_v} \left(1 - \frac{T_v}{T_s}\right)\right) & +\infty > T_s \geq T_R \\ p_c(T_s) & T_L \leq T_s < T_R. \end{cases} \quad (5)$$

It is well-known that the recombination rate  $\beta_R$  is a function of the Mach number at the exit of the Knudsen layer, which itself depends on the flow of the vapor plume inside the ambient atmosphere. Its value varies from  $\beta_R = 0.18$  for high evaporation rates (under vacuum conditions, or high laser intensity), to  $\beta_R = 1$  for low evaporation rates (high ambient pressure, or low laser intensity).<sup>9,20,22</sup> As the vapor flow is not computed here in our simulations, the recombination rate  $\beta_R$  in Eq. (5) was set to be a constant around 0.2.<sup>21</sup> One must add that the qualitative results and global conclusions, that follow, would not have been changed by using a recombination rate of 1. The calculated surface pressure law curves of 304 stainless steel by using the new recoil pressure model are shown in Fig. 2.

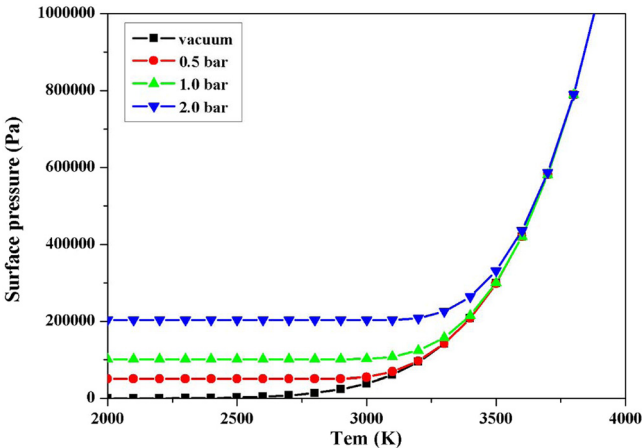


FIG. 2. Pressure dependent surface pressure of 304 stainless steel as a function of temperature, for different ambient pressures.

LW process involve complex self-consistent keyhole and weld pool dynamics, which are solved by a three dimensional computational fluid dynamics (CFD) model. Here, we mainly consider the process of laser welding realized with a fiber laser (1.07  $\mu$  m wavelength). The welded material is 304 stainless steel. Without loss of generality, two different pressures, vacuum (0 bar) and atmospheric pressure (1 bars) are used as the ambient pressure in LW process, respectively. Both the IB effect<sup>23</sup> and frictions effect of vapor plume<sup>24,25</sup> are neglected in numerical modeling, since we intend to give an explanation of penetration depth variation that well supports most of LW processes. The process parameters used in the simulations of LW under atmospheric pressure and vacuum are the same. The laser power is 2 kW and the welding speeds are 3, 4, 5, 6 m/min, respectively. A Gaussian beam intensity distribution with a beam radius, 0.25 mm, is used in the simulations. The heat transfer and fluid flow for the molten liquid inside weld pool are calculated by solving the following equations:<sup>19</sup>

$$\nabla \cdot \vec{U} = 0, \quad (6)$$

$$\rho \left( \frac{\partial \vec{U}}{\partial t} + (\vec{U} \cdot \nabla) \vec{U} \right) = \nabla \cdot (\mu_l \nabla \vec{U}) - \nabla p - \frac{\mu_l}{K} \vec{U} - \frac{C\rho}{\sqrt{K}} |\vec{U}| \vec{U} + \rho \vec{g} \beta (T - T_{ref}), \quad (7)$$

$$\rho C_p \left( \frac{\partial T}{\partial t} + (\vec{U} \cdot \nabla) T \right) = \nabla \cdot (k \nabla T), \quad (8)$$

where  $\vec{U}$ ,  $\rho$ ,  $p$ ,  $\mu_l$ ,  $\vec{g}$ ,  $T$ ,  $T_{ref}$ ,  $\beta$ ,  $C_p$ , and  $k$  represent the velocity, density, pressure, viscous, gravitational vector, temperature, reference temperature, thermal expansion coefficient, heat capacity, and heat conductivity, respectively.  $C$  is an inertial parameter related to the liquid fraction  $f_l$ ,  $C = 0.13 f_l^{-3/2}$ .<sup>19</sup>  $K$  is the Carman–Kozeny coefficient of the mixture model. The keyhole free surface evolutions are tracked with Level Set method and the time dependent keyhole profiles can be described as<sup>26</sup>

$$\frac{\partial \phi}{\partial t} + \vec{U} \cdot (\nabla \phi) = 0. \quad (9)$$

In the normal direction of keyhole wall, a pressure boundary condition, induced by surface pressure, surface tension as well as the hydrodynamic pressure, exists<sup>19</sup>

$$p = p'_s + \sigma \kappa + 2\mu_l \vec{n} \cdot \nabla \vec{U} \cdot \vec{n}, \quad (10)$$

where  $\sigma$  and  $\kappa$  are the surface tension coefficient and curvature, respectively, and  $p'_s$  is a pressure variable relating to the ambient pressure and the surface pressure previously defined. Since the density variation of molten liquid is small, the fluid flow of weld pool can be assumed to be incompressible. To make the calculation more convenient, the ambient pressure is taken as the zero level of pressure. Hence  $p'_s$  can be simplified as

$$p'_s = p_s - p_{amb}, \quad (11)$$

where  $p_s$  is determined by Eq. (5). On the tangential direction, a viscous stress boundary condition due to Marangoni effect and the viscous shear stress of fluid flow exists<sup>19</sup>

$$\begin{aligned}
(\mu_l \nabla \vec{U})_f &= \mu_l (\vec{n} \ \vec{t}_1 \ \vec{t}_2) (\vec{n} \ \vec{0} \ \vec{0})^T (\nabla \vec{U}) (\vec{n} \ \vec{0} \ \vec{0}) (\vec{n} \ \vec{t}_1 \ \vec{t}_2)^T \\
&+ \mu_l (\vec{n} \ \vec{t}_1 \ \vec{t}_2) (\vec{0} \ \vec{t}_1 \ \vec{t}_2)^T (\nabla \vec{U}) - \mu_l (\vec{n} \ \vec{t}_1 \ \vec{t}_2) (\vec{n} \ \vec{0} \ \vec{0})^T (\nabla \vec{U})^T (\vec{0} \ \vec{t}_1 \ \vec{t}_2) (\vec{n} \ \vec{t}_1 \ \vec{t}_2)^T \\
&+ (\vec{n} \ \vec{t}_1 \ \vec{t}_2) \begin{pmatrix} 0 & \nabla_s \sigma \cdot \vec{t}_1 & \nabla_s \sigma \cdot \vec{t}_2 \\ 0 & 0 & 0 \\ 0 & 0 & 0 \end{pmatrix} (\vec{n} \ \vec{t}_1 \ \vec{t}_2)^T, \tag{12}
\end{aligned}$$

where  $\vec{n}$  is the normal of keyhole surface,  $\vec{t}_1$  and  $\vec{t}_2$  are two perpendicular tangential vectors of keyhole interface which are perpendicular to the normal  $\vec{n}$ . On the keyhole wall, by considering the Fresnel absorption, heat convection and evaporation, the energy boundary condition can be determined as<sup>19</sup>

$$k \frac{\partial T}{\partial \vec{n}} = q - h(T - T_\infty) - \varepsilon_r \sigma_s (T^4 - T_\infty^4) - \rho V_{evp} L_v. \tag{13}$$

On other surfaces, the energy boundary condition is expressed as<sup>19</sup>

$$k \frac{\partial T}{\partial \vec{n}} = -h(T - T_\infty) - \varepsilon_r \sigma_s (T^4 - T_\infty^4). \tag{14}$$

In Eqs. (11) and (12),  $q$  is the energy absorbed by Fresnel absorption,  $h$  is the heat convection coefficient,  $\varepsilon_r$  is black body radiation coefficient,  $\sigma_s$  is Stefan–Boltzmann coefficient,  $L_v$  is the evaporation latent heat, and  $V_{evp}$  is keyhole interface recession speed due to evaporation, as described in Ref. 12. The energy  $q$  is the absorbed laser energy of keyhole wall due to multiple reflections Fresnel absorptions, as described in Ref. 19. The present CFD model is solved with an in-house parallelized simulation code.<sup>19</sup> For Eqs. (6)–(9), an explicit fifth order WENO scheme was used to discretize the convective term, an explicit third order TVD Runge–Kutta scheme was used to discretize the transient term and an implicit second order central difference scheme was used to discretize the diffusion term.<sup>27</sup> A well-known Projection method was used to solve the Navier–Stokes equations.<sup>28</sup> Moreover, a semi-implicit method, i.e., explicit scheme for transient term and implicit scheme for diffusion term, was used to solve the energy conservation equation.<sup>28</sup> The pressure, viscous, and energy boundary conditions were accurately treated using a sharp interface method.<sup>19</sup> A preconditioned conjugate gradient method was used to solve the resulted linear system of equations.<sup>28</sup> The overall solution procedure for Eqs. (6)–(14) is very similar to our previous study, as shown in Ref. 19.

### III. RESULTS AND DISCUSSION

Figures 3 and 4 show the longitudinal views of transient temperature evolutions of keyhole during LW with 2 kW laser power and 3 m/min welding speed under vacuum and atmospheric pressure, respectively. Under vacuum

environment, most of the temperature of keyhole wall is between 2200 and 2500 K. The distribution of keyhole temperature is not uniform. Several hump surfaces on the keyhole wall irradiated directly by the laser beam have the highest temperature, which is usually close to 2900 K. This temperature is much lower than the boiling point of the material (3100 K) at the atmospheric pressure. To sum up, the average keyhole temperature during LW under vacuum is noticeably lower than the boiling point of the material at the atmospheric pressure. However, under atmospheric pressure, most of the temperature of the keyhole wall is around the 2900 K or even higher. The keyhole temperature is also not uniform. The highest temperature, around 3400 K, occurs on the top part of the humped keyhole wall, which is directly illuminated by laser beam. In short, the average keyhole temperature is around the boiling point of the material or even higher during LW under atmospheric pressure.

It was widely assumed that during LW under atmospheric pressure, the keyhole wall temperature is around the boiling point. Despite this assumption was proposed nearly 40 years ago and widely adopted in modeling studies,<sup>24,29–32</sup> it was only recently experimentally validated by some of the authors of this paper.<sup>21</sup> Their experimental demonstration challenges the well-known assumption of Semak and Matsunawa<sup>33,34</sup> that the keyhole temperature does not need to exceed the boiling point to support the opening of the keyhole during LW under atmospheric pressure. With the proposed ambient pressure dependent surface pressure model shown in Eq. (3), our modeling results of keyhole wall temperature correspond well to the widely adopted assumptions and the very recent experimental results.

We note that most of previous theoretical modeling studies of LW process<sup>10–19</sup> were based on the recoil pressure model independent on ambient pressure shown in Eq. (1) (similarly to the vacuum case of our modified recoil pressure model). However, the predicated temperature with these models was significantly lower than the boiling point at the atmospheric pressure, which seems not to agree with the experimental results. The temperature difference can lead to the weld bead dimension difference shown in later sections (Fig. 6). Following our above explanations, the simulated keyhole wall temperature of these models is only a good approximation for vacuum LW. It is noted that experimental measurement of keyhole wall temperature in LW is very difficult and has not yet been studied. However, the keyhole wall temperature during vacuum EBW was experimentally

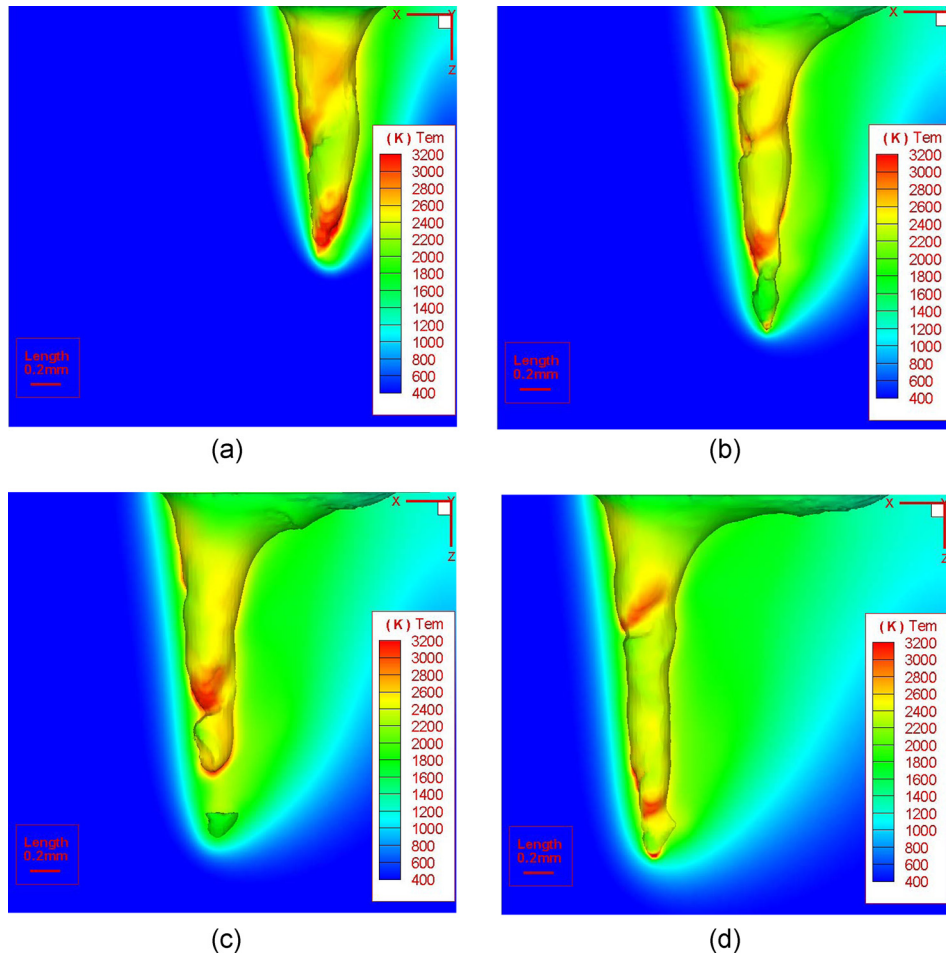


FIG. 3. Longitudinal views of transient temperature evolution during vacuum LW. (a) 8.27 ms, (b) 16.00 ms, (c) 23.61 ms, and (d) 31.50 ms.

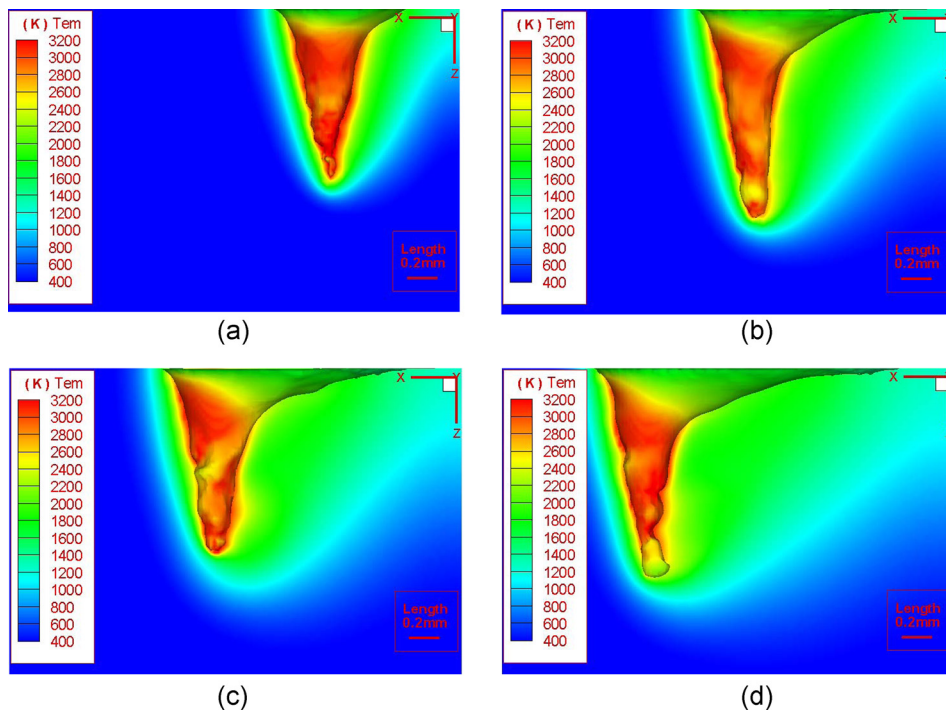


FIG. 4. Longitudinal views of transient temperature evolution during LW under atmospheric pressure. (a) 8.27 ms, (b) 16.00 ms, (c) 23.61 ms, and (d) 31.50 ms.

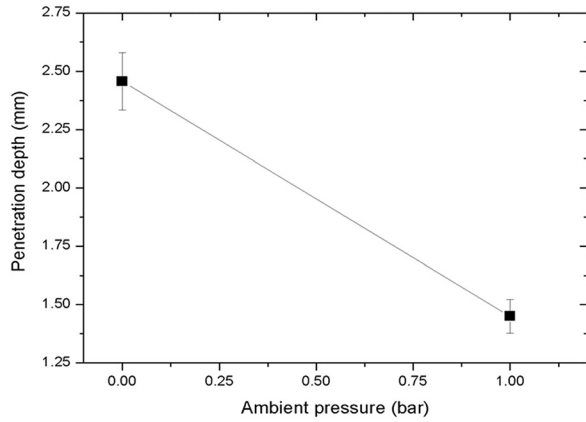


FIG. 5. Predicted weld depths during laser welding under variable ambient pressure. (2 kW, 3 m/min).

measured by Schauer *et al.*<sup>35</sup> Their results suggested that for steel alloy the maximum temperature is around 2200 K, which is significantly lower than the boiling point of the corresponding material. Considering the similarity between vacuum LW and EBW, the present modeling results of keyhole temperature during vacuum LW agree well with their experimental results.

Figure 5 shows the penetration depth comparisons between LW under vacuum and under atmospheric pressure for simulations realized with a fiber laser. The calculated penetration depth under vacuum is 2.5 mm, and the depth under atmospheric pressure is only around 1.5 mm. It can be noted that there is a striking difference between the two depths, and a smaller ambient pressure creates a deeper laser weld. This result can be easily understood if one considers the balance equation for the absorbed power that states the absorbed power per unit depth of the keyhole, which is known to be a decreasing function of keyhole wall temperatures: the same absorbed power can then be distributed along a deeper keyhole if its wall temperature is lower. Figure 6 shows a comparison of weld pool profiles, which is similar

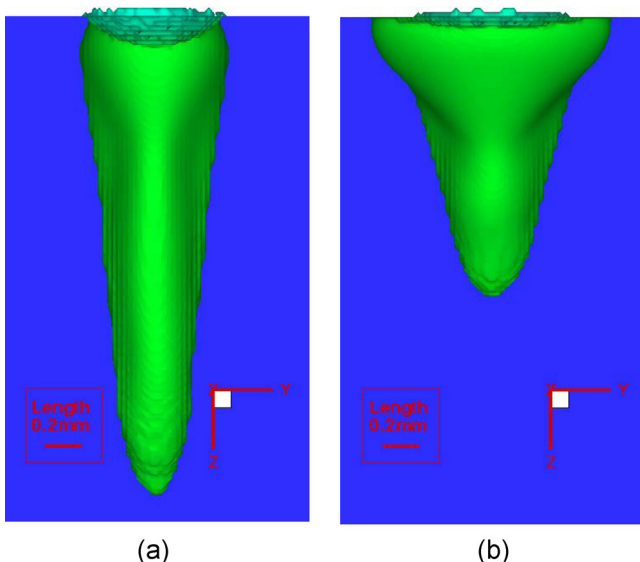


FIG. 6. Calculated weld pool profiles at 31 ms welding time during laser welding under variable ambient pressure (2 kW, 3 m/min). (a) Vacuum and (b) atmospheric pressure.

to the cross-section profile, projected along welding direction with 2 kW laser power and 3 m/min welding speed, under atmospheric pressure and vacuum. The width of weld in vacuum welding is around 0.6 mm while the width during laser welding under atmospheric pressure is around 0.9 mm, which is larger than the width under vacuum. This indicates that more heat is transferred to the lateral positions of work piece during LW under atmospheric pressure than under vacuum environment.

When the ambient pressure changes from atmospheric pressure to vacuum, this result predicates well the increase of depth and decrease of the width, which were observed in the past experiments.<sup>3-5</sup> In present study, the aspect ratio (depth/width) changes during laser welding under vacuum and under atmospheric pressure from 4.6 to 1.6. It is shown in Ref. 29 that the aspect ratio of the bead dimensions changes more than twice. This also qualitatively agrees with the present results of numerical calculations.

Previous experiments by several groups showed drastic change of the bead shape when the ambient pressure is lowered from 1 to 0 bars.<sup>23-25</sup> It is interesting to note that our simulations show a similar behavior even if the influence of IB, as pointed out in Ref. 6, or the difference in the magnitude of friction force on melt induced from uprising metallic vapor jet, as pointed out in Ref. 8, were not taken into account here. Our results indicate that the difference of the bead shape can be explained by the strong difference in the keyhole depth that results from the difference in the keyhole surface temperature, which is a consequence of the surface pressure law dependence on temperature. One can easily understand that for a large keyhole depth (obtained at low ambient pressures), the melt flow around the keyhole is mainly horizontal and at the keyhole top, the perturbation induced by the upper surface is negligible. On the other hand, for smaller keyhole depths, obtained at higher ambient pressures, so with larger keyhole surface temperatures, heat diffusion enlarges melt pool and allows a more complex 3D melt flow around the keyhole. In that case the aspect ratio is of course lower. Anyway, the important characteristic is the difference of the keyhole surface temperature, as was demonstrated by our calculations. It can be added that the interest of this investigation is related also to a better understanding of LW under the atmospheric pressure; for example, winecup shape generation at a low welding velocity. The result of our calculations also suggests that a correct formulation of the surface pressure based on experimental data is indispensable to investigate these fundamental aspects of LW process.

Figure 7 shows the simulated average temperature of front keyhole wall at 3, 4, 5, and 6 m/min welding speed under vacuum and atmospheric pressure. It is shown that as the welding speed increases, the average temperature of front keyhole wall increases under both vacuum and atmospheric pressure. One can easily understand that as the welding speed increases, the tilting angle of the front keyhole wall will increase and as a consequence the front keyhole wall will absorb more laser energy due to the reduction of the mean incidence angle, as shown in Ref. 36. Therefore, the temperature of keyhole wall increases. Moreover, it can be seen that the temperature rises faster under vacuum than

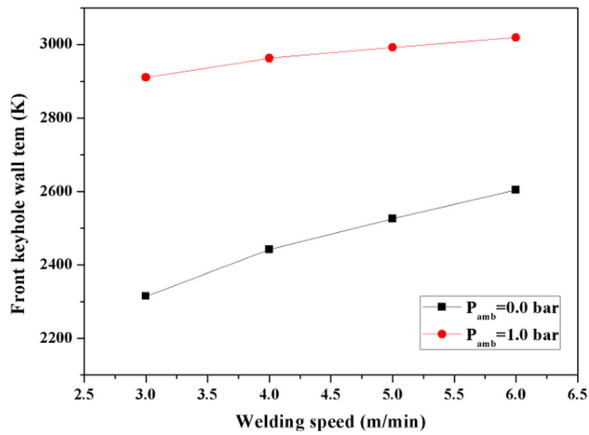


FIG. 7. Average temperature of front keyhole wall at different welding speeds under vacuum and atmospheric pressure.

atmospheric pressure. This originates from the exponential dependence of the recoil pressure on temperature, as shown in Fig.1. The same amount of pressure increase on the keyhole front wall, which is necessary to weld faster, can be obtained by a smaller increase of temperature under an ambient pressure of 1 bar than 0 bar, because the temperature is already higher. Therefore, the penetration depth variations will gradually diminish as the welding speed increases (as shown in Fig. 8) and as a result, it explains why the penetration depth becomes independent of ambient pressure for rather high welding speeds, in agreement with recent experiments.<sup>3,37</sup> Indeed, even with different operating parameters (incident laser powers or focal spot diameters) from those used in our simulations, these experiments show a very similar behavior of the penetration depth improvement under vacuum conditions compared to atmospheric one, when the welding speed varies. For a welding speed of 6 m/min, Katayama *et al.*<sup>37</sup> already observed this increase of about 40% (compared to 50% in our simulations). In agreement with the previous discussion, this increase was of course improved by reducing the welding speed, reaching 110% for a very low welding speed of 0.3 m/min. With different operating parameters, Böerner *et al.*<sup>3</sup> observed the beginning of the penetration depth increase at about 5 m/min, reaching

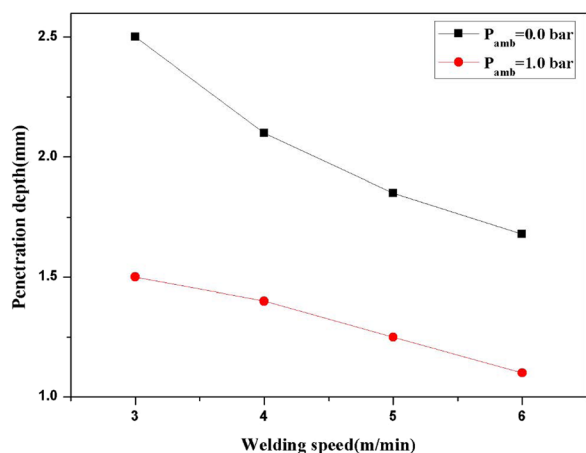


FIG. 8. Predicted weld depth during laser welding at different welding speeds under vacuum and atmospheric pressure.

60% for a welding speed of 0.5 m/min. These results confirm that at high welding speeds, the keyhole front temperature is high enough so that the resulting surface pressure becomes much greater than the ambient pressure, making the penetration depths independent of this ambient pressure.

#### IV. CONCLUSIONS

A correct description of the surface pressure for modeling of LW that involves the process of evaporation under any ambient pressure is proposed. This better description allows us to explain and reproduce the main experimental results observed under reduced pressure: deeper penetration depths, reduced keyhole surface temperatures, and smaller weld seam widths. It is also demonstrated that these modifications of the keyhole geometry are due to the reduced temperature of keyhole wall in LW process resulting from the reduced ambient pressures. Moreover, we also observed that the front keyhole wall temperature rises with increasing welding speed, and the amplitude of the temperature increase under reduced pressure is larger than under atmospheric pressure. It explains why the penetration depth improvement for LW under different ambient pressure gradually decreases to zero with the gradual increase of the welding speed and then becomes independent of the ambient pressure.

#### ACKNOWLEDGMENTS

The research of first author was financially supported by the National Natural Science Foundation of China (Nos. 51105153 and 51323009) and the National Basic Research Program of China (973 Program, No. 2014CB046703).

<sup>1</sup>W. W. Duley, *Laser Welding* (Wiley-Interscience, New York, 1999).

<sup>2</sup>H. Schultz, *Electron Beam Welding* (Woodhead Publishing/The Welding Institute, Cambridge, 1994).

<sup>3</sup>C. Böerner, K. Dilger, V. Rominger, T. Harrer, T. Krussel, and T. Lower, "Influence of ambient pressure on spattering and weld seam quality in laser beam welding with the solid-state laser," in *30th International Congress on Applications of Lasers and Electro-Optics, ICALEO 2011*, 23–27 October 2011 (Laser Institute of America, Orlando, FL), pp. 621–629.

<sup>4</sup>Y. Abe, M. Mizutani, Y. Kawahito, and S. Katayama, "Deep penetration welding with high power laser under vacuum," in *29th International Congress on Applications of Lasers and Electro-Optics, ICALEO 2010*, 26–30 September 2010 (Laser Institute of America, Anaheim, CA), pp. 648–653.

<sup>5</sup>S. Katayama, Y. Kobayashi, M. Mizutani, and A. Matsunawa, "Effect of vacuum on penetration and defects in laser welding," *J. Laser Appl.* **13**, 187–192 (2001).

<sup>6</sup>A. Verwaerde, R. Fabbro, and G. Deshors, "Experimental study of continuous CO<sub>2</sub> laser welding at subatmospheric pressures," *J. Appl. Phys.* **78**, 2981–2984 (1995).

<sup>7</sup>Y. Kawahito, M. Mizutani, and S. Katayama, "Elucidation of high-power fiber laser welding phenomena of stainless steel and effect of factors on weld geometry," *J. Phys. D: Appl. Phys.* **40**, 5854–5859 (2007).

<sup>8</sup>P. Shcheglov, A. Gumenyuk, I. Gornushkin, and M. Rethmeier, "Experimental investigation of the laser-plume interaction during high power fiber laser welding," in *30th International Congress on Applications of Lasers and Electro-Optics, ICALEO 2011*, 23–27 October 2011 (Laser Institute of America, Orlando, FL), pp. 637–645.

<sup>9</sup>S. I. Anisimov, "Vaporization of metal absorbing laser radiation," *Sov. Phys. JETP* **27**, 182–183 (1968).

<sup>10</sup>R. Fabbro and K. Chouf, "Keyhole modeling during laser welding," *J. Appl. Phys.* **87**, 4075–4083 (2000).



- <sup>11</sup>J. Y. Lee, S. H. Ko, D. F. Farson, and C. D. Yoo, "Mechanism of keyhole formation and stability in stationary laser welding," *J. Phys. D: Appl. Phys.* **35**, 1570–1576 (2002).
- <sup>12</sup>H. Ki, J. Mazumder, and P. Mohanty, "Modeling of laser keyhole welding: Part I. mathematical modeling, numerical methodology, role of recoil pressure, multiple reflections, and free surface evolution," *Metall. Mater. Trans. A* **33**, 1817–1830 (2002).
- <sup>13</sup>H. Ki, J. Mazumder, and P. Mohanty, "Modeling of laser keyhole welding: Part II. Simulation of keyhole evolution, velocity, temperature profile, and experimental verification," *Metall. Mater. Trans. A* **33**, 1831–1842 (2002).
- <sup>14</sup>J. Zhou, H.-L. Tsai, and P.-C. Wang, "Transport phenomena and keyhole dynamics during pulsed laser welding," *J. Heat Transfer* **128**, 680–690 (2005).
- <sup>15</sup>J. H. Cho and S. J. Na, "Implementation of real-time multiple reflection and Fresnel absorption of laser beam in keyhole," *J. Phys. D: Appl. Phys.* **39**, 5372–5378 (2006).
- <sup>16</sup>W. I. Cho, S. J. Na, C. Thomy, and F. Vollertsen, "Numerical simulation of molten pool dynamics in high power disk laser welding," *J. Mater. Process. Technol.* **212**, 262–275 (2012).
- <sup>17</sup>W. Tan, N. S. Bailey, and Y. C. Shin, "Investigation of keyhole plume and molten pool based on a three-dimensional dynamic model with sharp interface formulation," *J. Phys. D: Appl. Phys.* **46**, 055501 (2013).
- <sup>18</sup>L. J. Zhang, J. X. Zhang, A. Gumenyuk, M. Rethmeier, and S. J. Na, "Numerical simulation of molten pool dynamics in high power disk laser welding," *J. Mater. Process. Technol.* **214**, 1710–1720 (2014).
- <sup>19</sup>S. Pang, L. Chen, J. Zhou, Y. Yin, and T. Chen, "A three-dimensional sharp interface model for self-consistent keyhole and weld pool dynamics in deep penetration laser welding," *J. Phys. D: Appl. Phys.* **44**, 025301 (2011).
- <sup>20</sup>C. J. Knight, "Theoretical modeling of rapid surface vaporization with back pressure," *AIAA J.* **17**, 519–523 (1979).
- <sup>21</sup>K. Hirano, R. Fabbro, and M. Muller, "Experimental determination of temperature threshold for melt surface deformation during laser interaction on iron at atmospheric pressure," *J. Phys. D: Appl. Phys.* **44**, 435402 (2011).
- <sup>22</sup>A. A. Samokhin, "First-order phase transitions induced by laser radiation in absorbing condensed matter," in *Proceedings of the Institute of General Physics Vol. 13: Effect of Laser Radiation on Absorbing Condensed Matter*, edited by A. M. Prokhorov (Nova Science Publishers, Commack, 1990), pp. 1–161.
- <sup>23</sup>N. Seto, S. Katayama, and A. Matsunawa, "High-speed simultaneous observation of plasma and keyhole behavior during high power CO<sub>2</sub> laser welding: Effect of shielding gas on porosity formation," *J. Laser Appl.* **12**, 245–250 (2000).
- <sup>24</sup>R. Fabbro, M. Hamadou, and F. Coste, "Metallic vapor ejection effect on melt pool dynamics in deep penetration laser welding," *J. Laser Appl.* **16**, 16–19 (2004).
- <sup>25</sup>E. H. Amara and R. Fabbro, "Modelling of gas jet effect on the melt pool movements during deep penetration laser welding," *J. Phys. D: Appl. Phys.* **41**, 55503 (2008).
- <sup>26</sup>S. Osher and R. Fedkiw, *Level Set Methods and Dynamic Implicit Surfaces* (Springer Verlag, New York, 2003).
- <sup>27</sup>G. Jiang and C. W. Shu, "Efficient implementation of weighted ENO schemes," *J. Comput. Phys.* **126**, 202–228 (1996).
- <sup>28</sup>P. Wesseling, *Principles of Computational Fluid Dynamics* (Springer-Verlag, New York, NJ, 2001).
- <sup>29</sup>H. Du, "Laser welding mode laser simulation of the flow field for titanium alloy," Ph.D. thesis, Huazhong University of Science and Technology, People's Republic of China, 2004.
- <sup>30</sup>R. Rai, J. W. Elmer, T. A. Palmer, and T. DebRoy, "Heat transfer and fluid flow during keyhole mode laser welding of tantalum, Ti-6Al-4V, 304L stainless steel and vanadium," *J. Phys. D: Appl. Phys.* **40**, 5753–5766 (2007).
- <sup>31</sup>R. Rai, S. M. Kelly, R. P. Martukanitz, and T. DebRoy, "A convective heat-transfer model for partial and full penetration keyhole mode laser welding of a structural steel," *Metall. Mater. Trans. A* **39**, 98–112 (2008).
- <sup>32</sup>P. G. Klemens, "Heat balance and flow conditions for electron beam and laser welding," *J. Appl. Phys.* **47**, 2165–2174 (1976).
- <sup>33</sup>A. Matsunawa and V. Semak, "The simulation of front keyhole wall dynamics during laser welding," *J. Phys. D: Appl. Phys.* **30**, 798–809 (1997).
- <sup>34</sup>V. Semak and A. Matsunawa, "The role of recoil pressure in energy balance during laser materials processing," *J. Phys. D: Appl. Phys.* **30**, 2541–2552 (1997).
- <sup>35</sup>D. A. Schauer, W. H. Giedt, and S. M. Shintaku, "Electron beam welding cavity temperature distributions in pure metals and alloys," *Weld. J. (Miami, FL)* **57**, 127s–133s (1978).
- <sup>36</sup>R. Fabbro, "Melt pool and keyhole behavior analysis for deep penetration laser welding," *J. Phys. D: Appl. Phys.* **43**, 445501 (2010).
- <sup>37</sup>S. Katayama, Y. Abe, R. Ido, M. Mizutani, and Y. Kawahito, "Development of deep penetration welding technology with high brightness laser under vacuum," *Phys. Procedia* **12**, 75–80 (2011).