



### **Science Arts & Métiers (SAM)**

is an open access repository that collects the work of Arts et Métiers Institute of Technology researchers and makes it freely available over the web where possible.

This is an author-deposited version published in: <https://sam.ensam.eu>  
Handle ID: <http://hdl.handle.net/10985/13298>

#### **To cite this version :**

Virginie DEFAUCHY, Hélène LE CORRE, Xavier COLIN - Simulation of the Oxygen Permeability of a Composite Container - Journal of Composites Science - Vol. 21, p.2 - 2018

Any correspondence concerning this service should be sent to the repository

Administrator : [scienceouverte@ensam.eu](mailto:scienceouverte@ensam.eu)



# Simulation of the Oxygen Permeability of a Composite Container

Virginie Defauchy<sup>1</sup>, H el ene Le Corre<sup>2</sup> and Xavier Colin<sup>1,\*</sup> 

<sup>1</sup> Laboratoire PIMM, ARTS ET METIERS ParisTech, 151 Boulevard de l'H opital, 75013 Paris, France; virginie.defauchy@ensam.eu

<sup>2</sup> MBDA France, 1 Avenue R eumur, 92350 Le Plessis-Robinson, France; helene.le-corre@mbda-systems.com

\* Correspondence: xavier.colin@ensam.eu; Tel.: +33-1-44-24-61-47

**Abstract:** A kinetic model has been derived from the classical (Fick and Henry's) laws of the gas theory for predicting the oxygen permeability of a closed composite container, initially filled by pure nitrogen under a pressure slightly higher than the atmospheric pressure. Its two main parameters, namely the coefficients of oxygen solubility and diffusion, were determined beforehand by routine laboratory tests of oxygen permeation at 20, 30, and 45 °C. It appears clearly that oxygen molecules will quickly cross the composite wall to progressively modify the gas composition inside the container. Several solutions are proposed for trying to reduce the oxygen permeability.

**Keywords:** composite material; oxygen permeation; oxygen diffusion; kinetic modeling; Fick and Henry's laws

---

## 1. Introduction

Oxidation is one of the main mechanisms of chemical degradation limiting the lifetime of polymeric materials. It can be initiated by the decomposition of the own instabilities of the polymer, frequently hydroperoxides [1]. It can also result from the interactions of the polymer with an irradiation source, such as UV light [2] or ionizing radiation ( $\gamma$ ,  $\beta$ , or  $\alpha$ ) [3], and with chemical reagents in the form of free radicals (in ground state) coming from the exposure environment, such as chlorine disinfectants of drinking water [4,5].

In the arms and defense industry, it is usual to protect the polymer-based compounds that are very sensitive to oxidation (ammunition, propellants, etc.) in closed containers under a slight overpressure of pure nitrogen. However, some of these containers are made of an organic matrix composite material that is not totally impermeable to gases. It is thus feared that oxygen, which is initially present in the outer atmosphere of the container, crosses (by diffusion) the composite wall to progressively modify the gas composition inside the container. Accurate knowledge of the environmental conditions remains a major issue for the future studies on the durability of polymer-based compounds.

This article aims to present a relatively simple model for evaluating the changes in oxygen concentration inside the composite container over a quite realistic storage duration of polymer-based compounds, typically one decade. This model is derived from the classical (Fick and Henry's) laws of the gas theory [6]. Its main parameters are determined from routine laboratory tests of oxygen permeation at low temperature close to room temperature.

But, this model is not just a predictive tool. Indeed, it can be also used for carefully selecting the different constituents (i.e., the fibrous architecture and matrix) of the composite material and their respective fractions, but also for determining the minimum wall thickness of the composite container, allowing for the preservation of the polymer-based compounds depending on the environmental conditions.

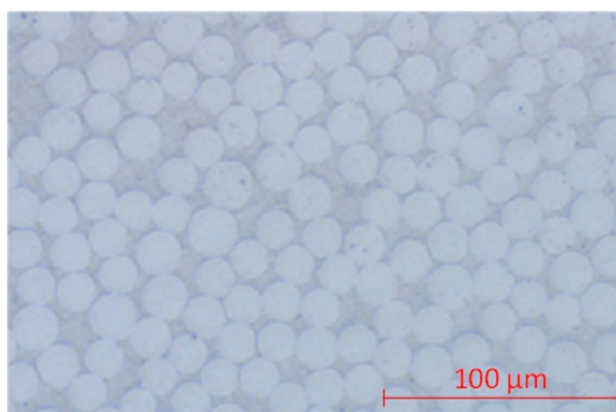
## 2. Experimental

### 2.1. Composite Material

The composite container was manufactured by filament winding. It is made of epoxy matrix reinforced by about 80 wt % of glass fibers. It is a tube of about 54 cm inner diameter, 57 cm outer diameter, and 7 m long.

This tube was cut with a diamond saw in both perpendicular and parallel directions to the fibers. Cross-sections were polished with a MECAPOL P320 device using silicon carbide abrasive papers of decreasing particle size (typically from 80 to 2400 granulometry) in order to be examined by optical microscopy and thus to check the good quality of the composite material after processing.

As an example, Figure 1 shows a surface cut in the perpendicular direction to the fibers, i.e., in the radial direction of the tube. It can be observed in the fairly homogeneous distribution of the fibers in the wall thickness, but also in the total absence of defects and damages of micrometric size (i.e., porosity, cracks, fiber/matrix debonding, etc.). As no fiber interlacing was put in evidence on micrographs, this material has been considered as a common unidirectional laminate thereafter.



**Figure 1.** Examination by optical microscopy of a surface cut in the radial direction of the composite container. The scale is indicated at the bottom right.

The average diameter of the glass fibers and their volume fraction was determined by image analysis with the ImageJ software. They are about 15  $\mu\text{m}$  and 60 vol %, respectively. It is noteworthy that this last value is quite consistent with the weight fraction of fibers of 80 wt % announced by the composite manufacturer. This satisfying agreement can be checked by simple calculation using the orders of magnitude of the densities of the glass fiber ( $\approx 2.6$ ) and epoxy resin ( $\approx 1.2$ ).

### 2.2. Oxygen Permeation

The oxygen transport properties across the wall thickness of the composite container were determined by oxygen permeation at 20, 30, and 45  $^{\circ}\text{C}$  in the total absence of humidity (0% RH). This technique consists of measuring the changes over time of the oxygen flow through a thin sample in order to deduce, from the resulting kinetic curve, the oxygen transport properties by applying the classical (Fick and Henry's) laws of the gas theory [6]. In the present study, the sample is a unidirectional laminate disc of 100 mm diameter and 0.5 mm thick, which was taken within the tube wall by lathe machining.

Very schematically, the composite disc is placed between the two compartments of a Systech 8001 permeameter. Firstly, a primary vacuum is obtained in both compartments by means of a common vane pump. This preliminary operation must be done carefully. It can last several weeks. It allows for the removal of all traces of oxygen in both compartments, but also the elimination of all the volatile compounds (in particular, sorbed water) that would have been released by the sample during

the permeation experiment. Then, pure oxygen is introduced under a pressure ranged between 2 and 3 bars into the upper compartment, while the lower compartment is swept by an oxygen free carrier gas (in this case, pure nitrogen) under atmospheric pressure. The pressure difference induces an oxygen flow from the upper to lower compartment, i.e., through the composite disc (see Figure 2).

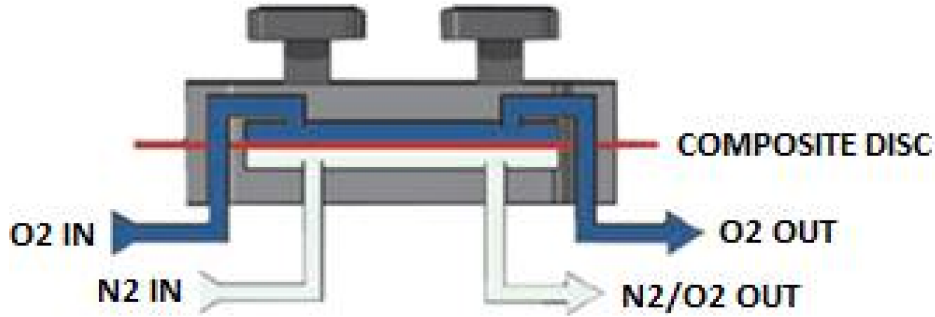


Figure 2. Scheme of the permeation cell.

Indeed, two important kinetic quantities are determined graphically (Figure 3):

- The time lag ( $t_{lag}$ ) corresponds to the duration of the transient regime, i.e., the duration for the first oxygen molecules to completely cross the composite disc of thickness  $E$ . Thus,  $t_{lag}$  is the characteristic time for oxygen diffusion. According to Barrer [7], it is inversely proportional to the coefficient of oxygen diffusion  $D$ :

$$t_{lag} = \frac{E^2}{6D} \quad (1)$$

- The permeability ( $P_e$ ) corresponds to slope of the steady-state regime, i.e., of the linear part of the kinetic curve. Its general mathematical expression is

$$P_e = D \times S \quad (2)$$

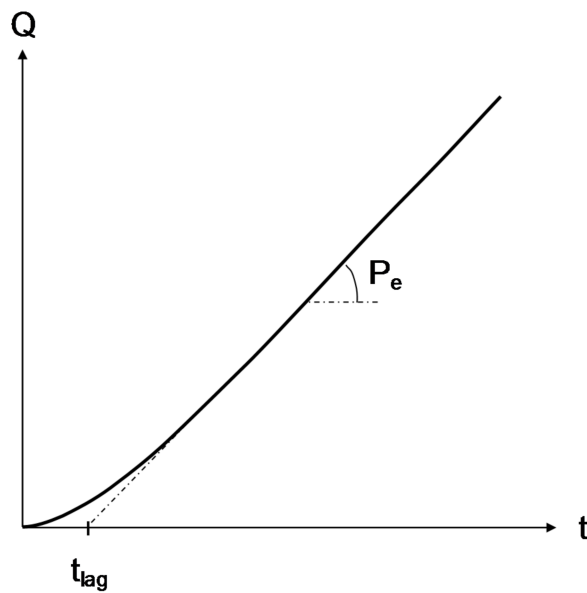


Figure 3. General shape of the cumulative oxygen flow versus the time of the experiment. Graphical determination of  $t_{lag}$  and  $P_e$ .

As  $D$  is known thanks to the first equation, the second equation can be used for deducing the value of the coefficient of oxygen solubility  $S$ .

### 2.3. Oxygen Transport Properties

The values of  $S$  and  $D$  determined experimentally at 20, 30, and 45 °C are summarized in Table 1. It is important to remember here that the experimental error in permeation is wide enough. It is of the order of 30% for both coefficients.

It can be seen that  $S$  and  $D$  vary little or erratically with temperature, and their values are located within the experimental error interval. Thus, in a first approach, it was assumed that they were totally independent of temperature. Their average value calculated for the whole temperature interval under investigation is also reported in Table 1.

The order of magnitude of  $S$  is in satisfying agreement with the values reported in the literature for an epoxy matrix crosslinked by an aromatic hardener. Indeed, for this matrix family,  $S$  is typically ranged between  $9.0 \times 10^{-5}$  [8] and  $3.4 \times 10^{-4} \text{ mol}\cdot\text{m}^{-3}\cdot\text{Pa}^{-1}$  [9].

**Table 1.** Values of  $S$  and  $D$  measured between 20 and 45 °C by oxygen permeation. Their average value in the whole temperature interval is given in the last column.

	Measured Values			Average Value
	20 °C	30 °C	45 °C	From 20 to 45 °C
$T$ (°C)				
$S$ ( $\text{mol}\cdot\text{m}^{-3}\cdot\text{Pa}^{-1}$ )	$2.9 \times 10^{-4}$	$1.3 \times 10^{-4}$	$1.2 \times 10^{-4}$	$1.8 \times 10^{-4}$
$D$ ( $\text{m}^2\cdot\text{s}^{-1}$ )	$6.9 \times 10^{-11}$	$8.7 \times 10^{-11}$	$7.4 \times 10^{-11}$	$7.6 \times 10^{-11}$

In contrast,  $D$  is about two orders of magnitude higher than the values reported in the literature for this matrix family, for which  $D$  is typically ranged between  $1.1 \times 10^{-13}$  [8] and  $3.0 \times 10^{-13} \text{ mol}\cdot\text{m}^{-3}\cdot\text{Pa}^{-1}$  [9]. At first sight, this result could seem surprising, because it was expected that the presence of fibers, which are oriented in the perpendicular direction to the oxygen flow, increases the tortuosity of the diffusion paths and thus reduces the diffusivity in the composite material [10].

According to the literature [10–12], this behavior can be explained by the presence of physical discontinuities in the composite material such as defects and damages (porosity, matrix cracking, fiber/matrix debonding, etc.), and a fiber/matrix interphase considerably more permeable than the matrix. Thus, the diffusion coefficient is a more complex quantity, often designated as an “effective” quantity, that accounts for the ease with which oxygen molecules cross the composite thickness. Indeed, this coefficient does not just depend on the diffusivity in the matrix and the fiber fraction and orientation, but also on the extent of the physical discontinuities in the composite material.

Simplified homogenized models, based only on geometric considerations, were proposed for calculating the diffusion coefficient in the different principal directions of an unidirectional laminate if its value in the matrix and the volume fraction of fibers are known. According to Kondo et al. [13], the diffusivities in the perpendicular ( $D_{\perp}$ ) and parallel directions to the fibers ( $D_{//}$ ) would be related by the following relationship:

$$D_{\perp} = \frac{(1 - \alpha\sqrt{V_f})}{1 - V_f} D_{//} \quad (3)$$

in which  $V_f$  is the volume fraction of fibers in the composite and  $\alpha$  is a constant such as  $\alpha = 2/\sqrt{\pi}$  for a cubic stack and  $\alpha = \sqrt{2\sqrt{3}/\pi}$  for an hexagonal stack of fibers [14].

In addition, in the parallel direction, it can be written [15]:

$$D_{//} = (1 - V_f)D_m \quad (4)$$

in which  $D_m$  is the coefficient of oxygen diffusion in the matrix.

More recently, Roy and Singh [16] showed that these models can be improved to take into account different types of physical discontinuities.

In this study, the impact of defects and damages can be excluded, because they were not evidenced by optical microscopy in Section 2.1. In contrast, the possibility of a highly permeable fiber/matrix interphase has to be considered with great attention. It presumably results from a lower crosslinking density of the epoxy resin at the close vicinity of the fiber surface. Indeed, let us recall that the oxygen diffusivity in crosslinked polymers is about 3 decades faster in rubber state than in glassy state [6]. To check this assumption, Equation (4) has been rewritten as follows:

$$D_{//} = V_m D_m + V_i D_i \quad (5)$$

in which  $V_m$  and  $V_i$  is the volume fraction of matrix and interphases in the composite, and  $D_m$  and  $D_i$  is the coefficient of oxygen diffusion in the matrix and interphase respectively.  
i.e.,

$$D_{//} = V_i D_i \left( 1 + \frac{V_m D_m}{V_i D_i} \right) \quad (6)$$

It can be deduced that oxygen molecules will be preferentially conveyed through the interphases if

$$\frac{V_m D_m}{V_i D_i} < 1 \quad (7)$$

Let us assume that:  $D_m / D_i \approx 10^{-3}$ . Then, this inequality can be rewritten:

$$\frac{V_m}{V_i} < 10^3 \quad (8)$$

i.e.,

$$V_i > 10^{-3} V_m \quad (9)$$

In other words, the interphases will play a key role in the diffusion process if they represent more than 0.1 vol % of the composite matrix.

Now, let us consider an interphase of tubular shape around the fiber (Figure 4). Its wall thickness is noted  $e_i$  and the fiber radius  $R_f$ . For a cubic stack of fibers, the volume fraction of interphases can be written:

$$V_i = \frac{\pi e_i}{2R_f} \left( 1 + \frac{e_i}{2R_f} \right) \quad (10)$$

i.e.,

$$V_i \approx \frac{\pi e_i}{2R_f} \quad (11)$$

The introduction of Equation (11) into Equation (9) leads finally to:

$$e_i > \frac{2}{\pi} 10^{-3} R_f V_m \quad (12)$$

Let us recall that  $R_f = 15 \mu\text{m}$  and  $V_m \approx 40\%$ . The numerical application gives  $e_i > 3.8 \cdot 10^{-9} \text{ m}$ . In other words, the interphases will play a key role in the diffusion process if they present a minimal thickness of 4 nm, which is a quite realistic order of magnitude.

Of course, this assumption must be also checked experimentally, in particular by measuring a polished cross-section the glass transition temperature  $T_g$  near the fiber surface with a probe of nanometric size. Unfortunately, our laboratory is not equipped with this type of experiment for the moment. It is noteworthy that experiments at so low scale are very difficult to realize and interpret. That is the reason why they constitute a real challenge still today.

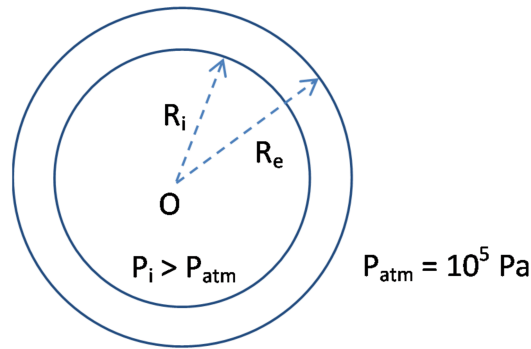


**Figure 4.** Schematization of a tubular interphase (in grey) around a fiber (in white area). Indication of its wall thickness and the fiber radius.

### 3. Kinetic Modeling

#### 3.1. Theory

A radial cross-section of the composite container is schematized in Figure 5. Its inner and outer radii are, respectively, noted  $R_i$  and  $R_e$ , and its length  $L$ . The container is filled with pure nitrogen under a pressure  $P_i$  slightly higher than the outer atmospheric pressure  $P_{atm}$ .



**Figure 5.** Schematization of a radial cross-section of the composite container. Indication of the inner and outer radii and gas pressures.

Oxygen molecules cross (by diffusion) the composite wall, firstly through the outer surface in contact with ambient air and, finally, through the inner surface in contact with nitrogen. There is infinity of diffusion directions, but all these directions are radial. Therefore, for describing the oxygen transport through the composite wall, only one variable will be considered: the radial coordinate  $r$ . In this case, the molar flow of oxygen  $\varphi$  writes:

$$\varphi = D \frac{dC}{dr} \quad (13)$$

i.e.,

$$\varphi dr = D dC \quad (14)$$

in which  $C$  is the oxygen concentration. Its values on the inner and outer surfaces of the tube are noted  $C_e$  and  $C_i$ , respectively.

The integration of this last equation along the entire wall leads to

$$\int_{R_i}^{R_e} \varphi(r) dr = D \int_{C_i}^{C_e} dC \quad (15)$$

Let us now write the mathematical expression of the oxygen balance within a volume element, which is located between two nested sub-tubes of respective radii  $r$  and  $r + dr$  and length  $L$  (see Figure 6):

$$\varphi S|_{r+dr} - \varphi S|_r = 0 \quad (16)$$

in which  $S$  is the crossed surface. It comes:

$$\frac{d}{dr}[\varphi S]dr = 0 \quad (17)$$

then

$$\frac{d}{dr}[\varphi 2\pi r L]dr = 0 \quad (18)$$

i.e.,

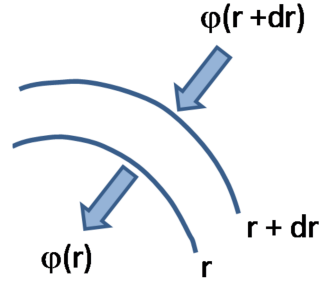
$$\frac{d}{dr}[r \varphi(r)] = 0 \quad (19)$$

then

$$r \varphi(r) = \text{Constant} = K \quad (20)$$

i.e.,

$$\varphi(r) = \frac{K}{r} \quad (21)$$



**Figure 6.** Schematization of the oxygen flow through a volume element of the composite wall.

The introduction of Equation (21) into Equation (15) leads to

$$\int_{R_i}^{R_e} \varphi(r)dr = K \int_{R_i}^{R_e} \frac{dr}{r} = D \int_{C_i}^{C_e} dC \quad (22)$$

then

$$K \text{Ln} \frac{R_e}{R_i} = D (C_e - C_i) \quad (23)$$

then

$$K = \frac{D (C_e - C_i)}{\text{Ln} \frac{R_e}{R_i}} \quad (24)$$

finally

$$\varphi(r) = \frac{K}{r} = \frac{1}{r} \frac{D (C_e - C_i)}{\text{Ln} \frac{R_e}{R_i}} \quad (25)$$

The expression of the oxygen debit is obtained by integrating the oxygen flow on the crossed surface  $S$ , i.e., on the surface perpendicular to the radial direction

$$\frac{dn_{O_2}}{dt} = \iint \varphi(r)dS = \iint \varphi(r)d\theta dz \quad (26)$$



in which  $\theta$  is the angular coordinate and  $z$  is the longitudinal coordinate. It comes to

$$\frac{dn_{O_2}}{dt} = \int_0^{2\pi} d\theta \int_0^L \frac{K}{r} dz \quad (27)$$

then

$$\frac{dn_{O_2}}{dt} = 2\pi K L \quad (28)$$

i.e.,

$$\frac{dn_{O_2}}{dt} = 2\pi L \frac{D (C_e - C_i)}{Ln \frac{R_e}{R_i}} \quad (29)$$

The oxygen concentration on the inner and outer surfaces of the tube is given by the classical Henry's law [6], respectively:

$$C_i = S P_{O_2,i} \quad (30)$$

and

$$C_e = S P_{O_2,atm} \quad (31)$$

in which  $P_{O_2,i}$  and  $P_{O_2,atm}$  are the partial pressures of oxygen inside and outside the composite container, respectively.

It is well known that the atmospheric pressure is  $P_{atm} = 10^5$  Pa, and air is composed of 21 mol% of oxygen. Thus, the application of the well-known Dalton's law to Equation (31) gives

$$C_e = 0.21 S P_{atm} \quad (32)$$

It is also known that the composite container is initially filled by pure nitrogen. Thus, at  $t = 0$ ,  $C_i = 0$ . However, oxygen molecules will cross (by diffusion) the composite wall over time; thus, the molar fraction of oxygen will progressively increase inside the tube. Simultaneously, nitrogen molecules, initially contained inside the tube, will cross the composite wall in the opposite direction in order to leave the tube. Therefore, if the gas pressure is identical inside and outside the tube, i.e., if  $P_i = P_{atm}$ , air is expected to be the final composition of gas inside the tube. In contrast, if the gas pressure is higher inside than outside the tube, i.e., if  $P_i > P_{atm}$ , then the molar fraction of oxygen is expected to reach a final value lower than 21 mol%.

Thereafter, three simplifying assumptions have been made:

- The total number of moles of gas inside the tube remains constant throughout the storage duration of polymer-based compounds, i.e.,

$$n_{tot} = n_{N_2} + n_{O_2} = Constant \quad (33)$$

In other words, there are as many moles of oxygen entering inside the tube as moles of nitrogen coming out of the tube. This assumption is valid if the gas pressure is almost the same inside and outside the tube, but also if the transport properties of nitrogen and oxygen in polymers are very close. Fortunately, these latter differ by no more than a factor 2 [6].

- Nitrogen and oxygen obey the theory of perfect gases, i.e.,

$$n_{tot} = \frac{P_i V}{RT} = Constant \quad (34)$$

in which  $V$  is the volume of gas inside the tube,  $R = 8.314 \text{ J}\cdot\text{mol}^{-1}\cdot\text{K}^{-1}$  is the universal constant for perfect gases, and  $T$  is the absolute temperature (expressed in K).

- The slight overpressure of gas inside the tube is maintained at its initial value throughout the storage duration of polymer-based compounds, i.e.,

$$P_i = \beta P_{atm} \quad (35)$$

with  $\beta$  a coefficient greater than unity, but not so much higher. Typically,  $\beta$  is ranged between 1.1 and 1.4.

Taking into account these three assumptions, Equation (30) can be rewritten:

$$C_i = S \frac{n_{O_2}}{n_{tot}} P_i \quad (36)$$

i.e.,

$$C_i = S n_{O_2} \frac{RT}{V} \quad (37)$$

Therefore, Equation (29) can be rewritten:

$$\frac{dn_{O_2}}{dt} = \frac{2\pi L D S}{Ln \frac{R_e}{R_i}} \left( 0.21 P_{atm} - n_{O_2} \frac{RT}{V} \right) \quad (38)$$

i.e.,

$$\frac{dn_{O_2}}{0.21 P_{atm} - n_{O_2} \frac{RT}{V}} = \frac{2\pi L D S}{Ln \frac{R_e}{R_i}} dt \quad (39)$$

then

$$\int_0^{n_{O_2}} \frac{dn_{O_2}}{0.21 P_{atm} - n_{O_2} \frac{RT}{V}} = \int_0^t \frac{2\pi L D S}{Ln \frac{R_e}{R_i}} dt \quad (40)$$

then

$$-\frac{V}{RT} Ln \left[ 1 - \frac{n_{O_2} \frac{RT}{V}}{0.21 P_{atm}} \right] = \frac{2\pi L D S}{Ln \frac{R_e}{R_i}} t \quad (41)$$

i.e.,

$$Ln \left[ 1 - \frac{n_{O_2} \frac{RT}{V}}{0.21 P_{atm}} \right] = -\frac{RT}{V} \frac{2\pi L D S}{Ln \frac{R_e}{R_i}} t \quad (42)$$

then

$$1 - \frac{n_{O_2} \frac{RT}{V}}{0.21 P_{atm}} = Exp \left[ -\frac{RT}{V} \frac{2\pi L D S}{Ln \frac{R_e}{R_i}} t \right] \quad (43)$$

i.e.,

$$n_{O_2} = \frac{0.21 P_{atm} V}{RT} \left\{ 1 - Exp \left[ -\frac{RT}{V} \frac{2\pi L D S}{Ln \frac{R_e}{R_i}} t \right] \right\} \quad (44)$$

This last equation gives access to the number of oxygen moles entering at any time  $t$  inside the composite container depending on the environmental conditions. The resulting mathematical expressions of the oxygen concentration  $C$  and molar fraction of oxygen  $x_{O_2}$  inside the composite container are, respectively,

$$C = \frac{n_{O_2}}{V} = \frac{0.21 P_{atm}}{RT} \left\{ 1 - Exp \left[ -\frac{RT}{V} \frac{2\pi L D S}{Ln \frac{R_e}{R_i}} t \right] \right\} \quad (45)$$

and

$$x_{O_2} = \frac{n_{O_2}}{n_{tot}} = \frac{0.21 P_{atm} V}{n_{tot} RT} \left\{ 1 - Exp \left[ -\frac{RT}{V} \frac{2\pi L D S}{Ln \frac{R_e}{R_i}} t \right] \right\} \quad (46)$$

i.e.,

$$x_{O_2} = \frac{0.21}{\beta} \left\{ 1 - Exp \left[ -\frac{RT}{V} \frac{2\pi L D S}{Ln \frac{R_e}{R_i}} t \right] \right\} \quad (47)$$

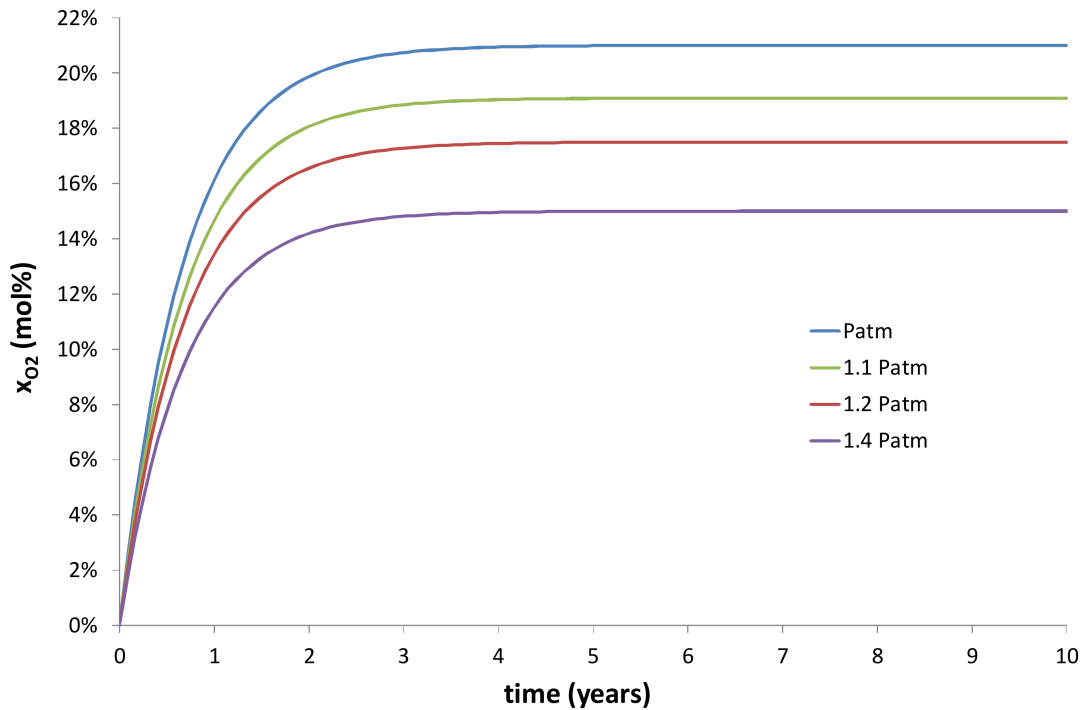
Thus, according to this model,  $C$  will be totally independent of the gas pressure inside the composite container, unlike  $x_{O_2}$ . In addition, as the coefficients of oxygen solubility  $S$  and diffusion  $D$  are almost independent of the temperature (see Section 3.1),  $C$  and  $x_{O_2}$  will vary much less than expected with temperature.

### 3.2. Prediction of the Oxygen Permeability

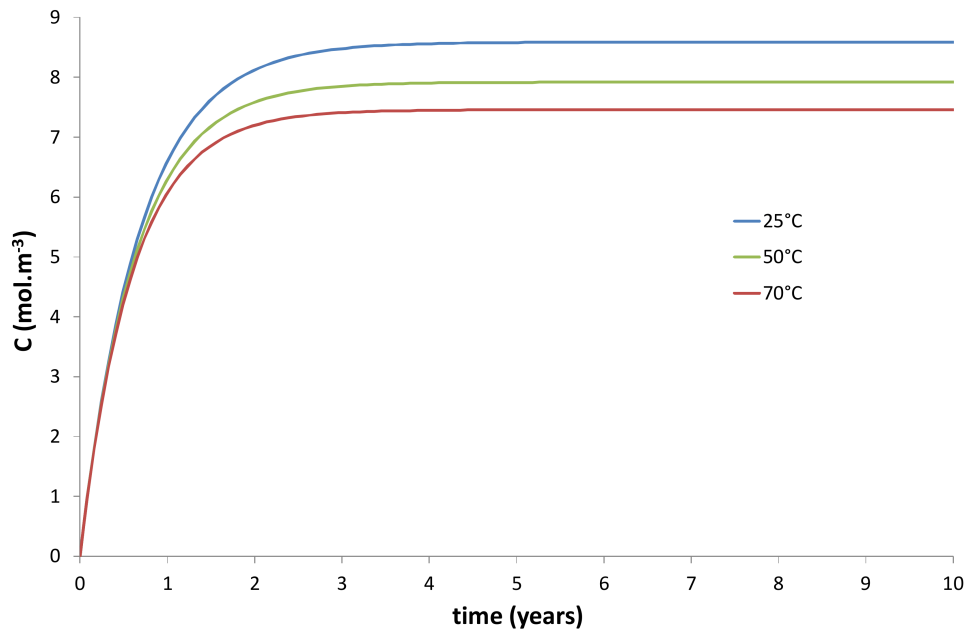
Let us remember that the composite container under study has approximately the following sizes:  $R_i = 54$  cm,  $R_e = 57$  cm, and  $L = 7$  m. Figure 7 reports the changes in molar fraction of oxygen  $x_{O_2}$  at 25 °C for different inner pressures of gas, typically for  $P_i = P_{atm}$ ,  $1.1 \times P_{atm}$ ,  $1.2 \times P_{atm}$ , and  $1.4 \times P_{atm}$ . The resulting kinetic curves are mainly distinguished by their final saturation value. As expected, air (i.e., 21 mol% of oxygen) is the final composition of gas inside the composite container when  $P_i = P_{atm}$ . Moreover, the maximum value of  $x_{O_2}$  decreases slowly when  $P_i$  increases. Typically,  $x_{O_2}$  reaches a maximum value of 19 mol% when  $P_i = 1.1 \times P_{atm}$ , 17 mol% when  $P_i = 1.2 \times P_{atm}$ , and 15 mol% when  $P_i = 1.4 \times P_{atm}$ .

Figures 8 and 9, respectively, report the changes in  $C$  and  $x_{O_2}$  at 25, 50, and 70 °C for an inner pressure of gas of  $P_i = 1.1 \times P_{atm}$ . As expected (see Equations (45) and (47)), only  $C$  depends on temperature. The different kinetic curves of  $C$  mainly distinguish by their final saturation value, which decreases when  $T$  increases. Typically,  $C$  reaches a maximum value of  $8.6 \text{ mol}\cdot\text{m}^{-3}$  at 25 °C,  $7.9 \text{ mol}\cdot\text{m}^{-3}$  at 50 °C, and  $7.5 \text{ mol}\cdot\text{m}^{-3}$  at 70 °C. In contrast,  $x_{O_2}$  reaches a maximum value of 19 mol% whatever the temperature.

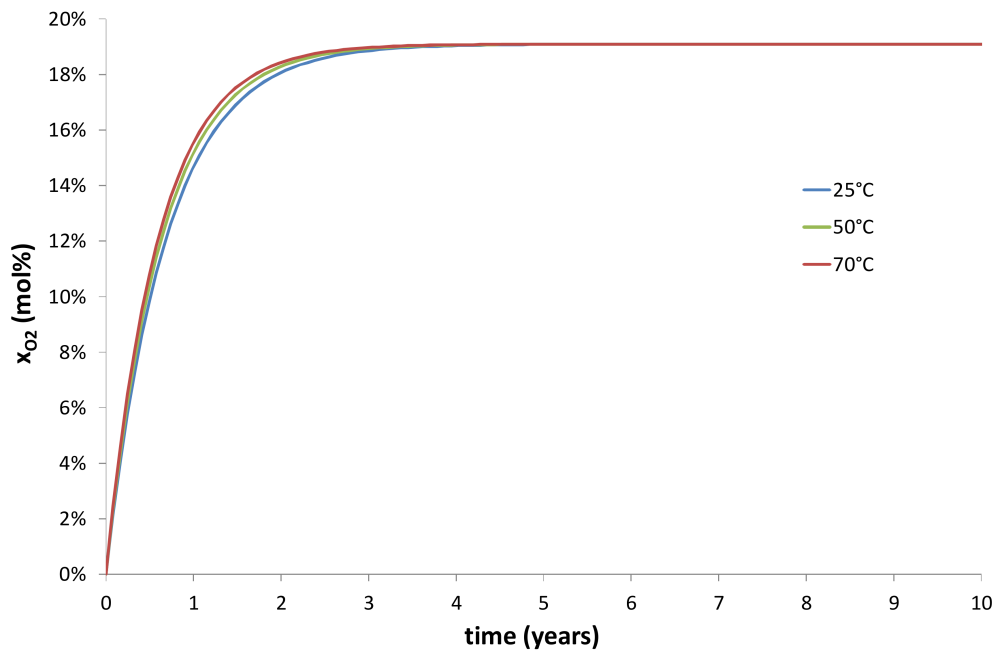
Oxygen molecules rapidly cross the composite wall whatever the scenario that is considered. Indeed, the maximum values of  $C$  and  $x_{O_2}$  are reached after only 3–4 years whatever the inner gas pressure and temperature. This time is largely lower than the minimum duration imposed by the specifications for the composite container, typically 10 years.



**Figure 7.** Changes in the molar fraction of oxygen  $x_{O_2}$  over time at 25 °C. Impact of the inner pressure of gas.



**Figure 8.** Changes in the oxygen concentration  $C$  over time for an inner gas pressure of  $1.1 \times P_{atm}$ . Impact of temperature.

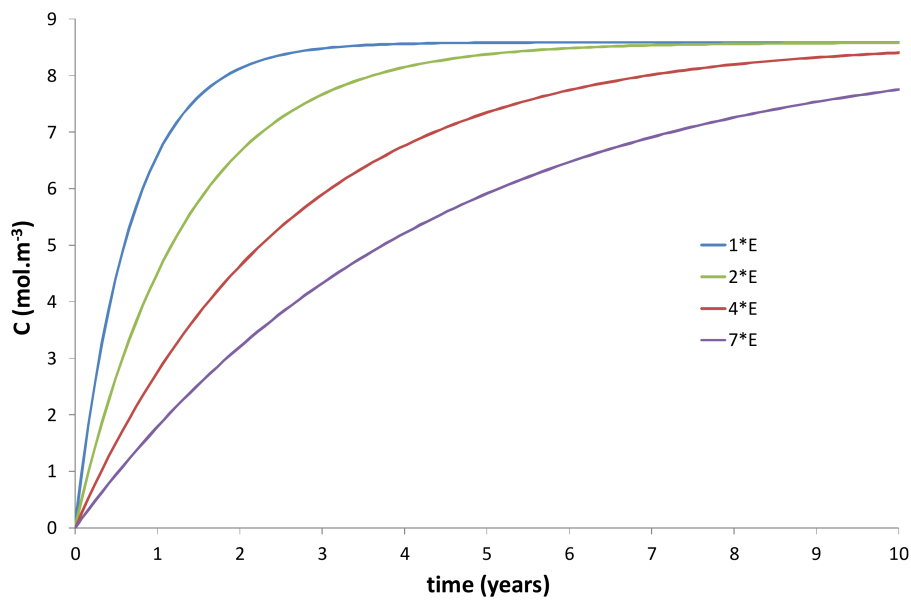


**Figure 9.** Changes in the molar fraction of oxygen  $x_{O_2}$  over time for an inner gas pressure of  $1.1 \times P_{atm}$ . Impact of temperature.

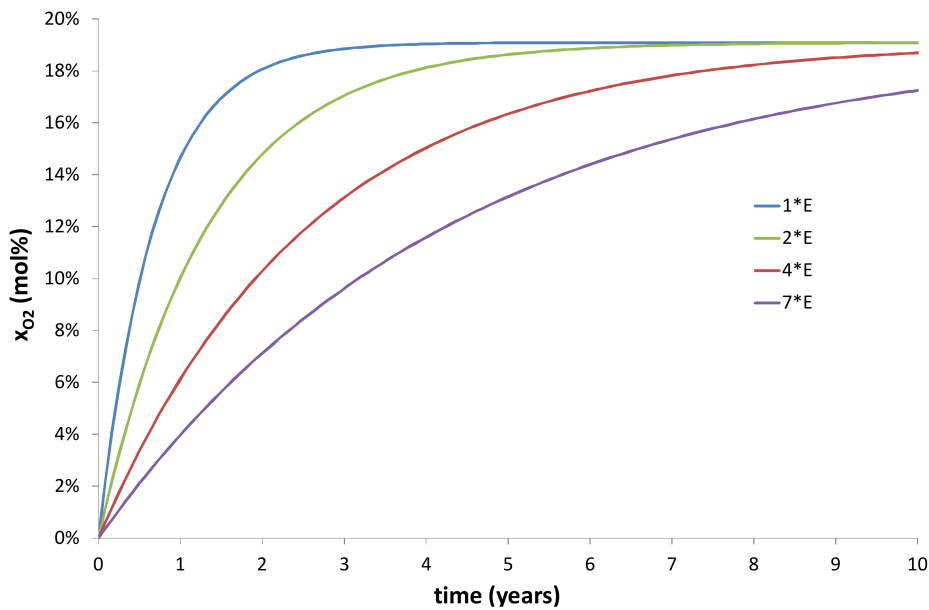
Different solutions can be proposed to tentatively increase this time:

- A reduction of the coefficient of oxygen diffusion across the composite wall thanks to a careful selection of the different constituents (i.e., the fibrous structure and matrix) of the composite material. In particular, the use of a denser fibrous architecture with fibers oriented in several directions (i.e., fabric, braid, or knit) would allow for a significant increase of the fiber fraction and the tortuosity of diffusion paths.

- A reduction of the coefficient of oxygen diffusion thanks to a better control of the processing conditions of the composite material to guarantee minimum ratios of defects and damages (porosity, matrix cracking, fiber/matrix debonding, etc.) and a higher crosslinking density of the epoxy resin in the fiber/matrix interphase.
- An increase of the wall thickness of the composite container  $E = R_e - R_i$ . In the present study,  $E$  was approximately fixed at 3 cm. However, this thickness can be progressively increased in order to extend the duration of the transient regime of the kinetic curves, as evidenced in Figures 10 and 11.
- The use of an impermeable coating is certainly another possibility to reach this goal.



**Figure 10.** Changes in the oxygen concentration  $C$  over time at 25 °C for an inner gas pressure of  $1.1 \times P_{atm}$ . Impact of wall thickness.



**Figure 11.** Changes in the molar fraction of oxygen  $x_{O_2}$  over time at 25 °C for an inner gas pressure of  $1.1 \times P_{atm}$ . Impact of wall thickness.

## 4. Conclusions

The main results of this study can be summarized as follows. On one hand, oxygen permeation tests have assessed the permeability to oxygen of the composite material under study. The high value is presumably due to the low crosslinking density of the epoxy resin in the fiber/matrix interphase. On the other hand, a kinetic model has been derived from the classical (Fick and Henry's) laws of the gas theory. It appears clearly that oxygen molecules will quickly cross the composite wall to progressively modify the gas composition inside the container. Contrary to what was believed until now, the initial composition and pressure of the gas atmosphere inside the container only impact the molar fraction of oxygen  $x_{O_2}$ , but this effect is relatively limited (Figure 7).

Thenceforth, several solutions have been proposed to tentatively reduce the oxygen permeability, for instance: a careful selection of the different constituents (i.e., the fibrous architecture and matrix) of the composite material, the use of a denser fibrous architecture (i.e., fabric, braid or knit) to significantly increase the fiber fraction and the tortuosity of diffusion paths, a better control of the processing conditions to guarantee minimum ratios of defects and damages but also a higher crosslinking density of the epoxy resin in the interphase, an increase of the wall thickness of the composite container, the use of an impermeable coating, etc.

**Author Contributions:** Virginie Defauchy performed the experiments; Virginie Defauchy and Xavier Colin analyzed the data; Xavier Colin developed the kinetic model and performed the simulations; all authors wrote the paper.

**Conflicts of Interest:** The authors declare no conflict of interest.

## References

1. Colin, X.; Fayolle, B.; Audouin, L.; Verdu, J. The classical kinetic model for radical chain oxidation of hydrocarbon substrates initiated by bimolecular hydroperoxide decomposition. *Int. J. Chem. Kinet.* **2006**, *38*, 666–676. [[CrossRef](#)]
2. François-Heude, A.; Richaud, E.; Desnoux, E.; Colin, X. A general kinetic model for the photothermal oxidation of polypropylene. *J. Photochem. Photobiol.* **2015**, *A296*, 48–65. [[CrossRef](#)]
3. Colin, X.; Monchy-Leroy, C.; Audouin, L.; Verdu, J. Lifetime prediction of polyethylene in nuclear plants. *Nucl. Instrum. Methods Phys. Res.* **2007**, *B265*, 251–255. [[CrossRef](#)]
4. Colin, X.; Audouin, L.; Verdu, J.; Rozental-Evesque, M.; Rabaud, B.; Martin, F.; Bourguine, F. Aging of polyethylene pipes transporting drinking water disinfected by chlorine dioxide. I. Chemical aspects. *Polym. Eng. Sci.* **2009**, *49*, 1429–1437. [[CrossRef](#)]
5. Mikdam, A.; Colin, X.; Minard, G.; Billon, N.; Maurin, R. A kinetic model for predicting the oxidative degradation of additive free polyethylene in bleach disinfected water. *Polym. Degrad. Stab.* **2017**, *146*, 78–94. [[CrossRef](#)]
6. Van Krevelen, D.W.; Hoftyser, P.J. *Properties of Polymers. Their Estimation and Correlation with Chemical Structure. Their Numerical Estimation and Prediction from Additive Group Contributions*, 4th ed.; Elsevier: Amsterdam, The Netherlands, 2009; pp. 656–681.
7. Barrer, R.M.; Rideal, E.K. Permeation, diffusion and solution of gases in organic polymers. *Trans. Faraday Soc.* **1939**, *35*, 628–643. [[CrossRef](#)]
8. Damian, C.; Espuche, E.; Escoubes, M. Influence of three ageing types (thermal oxidation, radiochemical and hydrolytic ageing) on the structure and gas transport properties of epoxy-amine networks. *Polym. Degrad. Stab.* **2001**, *72*, 447–458. [[CrossRef](#)]
9. Colin, X.; Marais, C.; Verdu, J. A new method for predicting the thermal oxidation of thermoset matrices: Application to an amine crosslinked epoxy. *Polym. Test.* **2001**, *20*, 795–803. [[CrossRef](#)]
10. Colin, X.; Mavel, A.; Marais, C.; Verdu, J. Interaction between cracking and oxidation in organic matrix composites. *J. Compos. Mater.* **2005**, *39*, 1371–1389. [[CrossRef](#)]
11. Pochiraju, K.; Tandon, G.P. Interaction of oxidation and damage in high temperature polymeric matrix composites. *Compos. Part A* **2009**, *40*, 1931–1940. [[CrossRef](#)]

12. Vu, D.Q. Endommagements Induits Par la Thermo Oxydation Dans les Composites Carbone/Epoxy Unidirectionnels et Stratifiés. Ph.D. Thesis, ENSMA, Poitiers, France, 2011.
13. Kondo, K.; Taki, T. Moisture diffusivity of unidirectional composites. *J. Compos. Mater.* **1982**, *16*, 82–93. [[CrossRef](#)]
14. Whitcomb, J.; Xiaodong, T. Micromechanics of moisture diffusion in composites with impermeable fibers. *J. Compos. Mater.* **2002**, *36*, 1093–1101. [[CrossRef](#)]
15. Tsai, S.W. *Composite Design*, 4th ed.; Think Composites: Dayton, OH, USA, 1988.
16. Roy, S.; Singh, S. Analytical modeling of orthotropic diffusivities in a fiber reinforced composite with discontinuities using homogenization. *Compos. Sci. Technol.* **2009**, *69*, 1962–1967. [[CrossRef](#)]



© 2018 by the authors. Licensee MDPI, Basel, Switzerland. This article is an open access article distributed under the terms and conditions of the Creative Commons Attribution (CC BY) license (<http://creativecommons.org/licenses/by/4.0/>).