



### Science Arts & Métiers (SAM)

is an open access repository that collects the work of Arts et Métiers Institute of Technology researchers and makes it freely available over the web where possible.

This is an author-deposited version published in: <https://sam.ensam.eu>  
Handle ID: <http://hdl.handle.net/10985/17423>

#### To cite this version :

Mehrdad MOHAMMADI, Reza TAVAKKOLI-MOGHADDAM, Ali SIADAT, Jean-Yves DANTAN - A bi-objective robust inspection planning model in a multi-stage serial production system - International Journal of Production Research - Vol. 56, n°4, p.1432-1457 - 2017

Any correspondence concerning this service should be sent to the repository

Administrator : [scienceouverte@ensam.eu](mailto:scienceouverte@ensam.eu)



# A bi-objective robust inspection planning model in a multi-stage serial production system

M. Mohammadi <sup>a\*</sup>, J.-Y. Dantan <sup>b</sup>, A. Siadat <sup>b</sup>, R. Tavakkoli-Moghaddam <sup>c</sup>

<sup>a</sup> *Ecole des Mines de Saint-Etienne, Department of Manufacturing Sciences and Logistics, CMP, CNRS UMR 6158 LIMOS, 880 avenue de Mimet, 13541 Gardanne, France*

<sup>b</sup> *LCFC, CER Metz - Arts et Métiers Paris Tech, Metz, France*

<sup>c</sup> *School of Industrial Engineering, College of Engineering, University of Tehran, Tehran, Iran*

## Abstract

In this paper, a bi-objective mixed-integer linear programming (BOMILP) model for planning of an inspection process used to detect nonconforming products and malfunctioning processors in a multi-stage serial production system is presented. The model involves two inter-related decisions: 1) *which* quality characteristics need *what* kind of inspections (i.e., *which-what* decision) and 2) *when* the inspection of these characteristics should be performed (i.e., *when* decision). These decisions require a trade-off between the cost of manufacturing (i.e., production, inspection and scrap costs) and the customer satisfaction. Due to inevitable variations in the manufacturing systems, a global robust BOMILP (RBOMILP) is developed to tackle the inherent uncertainty of the concerned parameters (i.e., production and inspection times, errors type I and II, misadjustment and dispersion of the process). In order to optimally solve the presented RBOMILP model, a meta-heuristic algorithm, namely differential evolution (DE) algorithm, is combined with the Taguchi and Monte Carlo methods. The proposed model and solution algorithm are validated through a real industrial case from a leading automotive industry in France.

**Keywords:** Multi-stage production system; Conformity inspection; Monitoring inspection; Multi-objective optimization; Robust optimization; Differential evolution.

## 1. Introduction

Since many production processes are technologically incapable of producing high-quality products, a quality management system (QMS) has gained increasingly high importance in many modern production systems, in which incapable production techniques, defective equipment and inferior raw materials are some of the external factors resulting in the quality problems. Accordingly, production managers are constantly attempting to provide a quality control system (QCS) to obtain high-quality products in the presence of such adverse external factors. In order to secure an effective QCS under such conditions, in-line quality control measures are employed more intensively, and if workable, automatically. For having an effective QCS, firms invest large amounts in inspection systems, and inspection planning problems stay on top of the manager's concerns. Inspection allocation and selection decisions are actually made by quality managers; however, an overall framework for their decisions when they should decide *which* quality characteristics of the products need to be inspected and *when* to be inspected through the process and *how* to be inspected (i.e., which type of inspection) is almost missing.

Decisions regarding the inspection of products to detect the nonconforming parts before being sold are made in every production system. In particular, planning of inspection in a multi-stage production system (MPS), where raw materials are transformed into the final product through a series of distinct and consecutive processing stages has been recognized as one of the major necessities in production systems. Since the MPS presents various possibilities for inspection, inspection activities in the MPS may be performed after some or all of the processing steps. Therefore, inspection planning (IP) in the MPS is to determine the must-inspect quality characteristics as well as time and type of the inspections.

In the inspection planning process, conformity (CI) and monitoring (MI) inspections are integrated with production processes (Mohammadi et al., 2014a, 2015). CI is the collective term used for a number of activities (e.g., testing, inspection and certification) to specify whether the final product meets the designed characteristics. In other words, CI determines whether the product has been correctly manufactured based on the process plan and it complies with the design specifications. More importantly, in CI no deviation from the design specifications is allowed and the nonconforming products might be

\* Corresponding author. Tel: +33 2 90 00 10 30

E-mail address: mehrdad.mohammadi@imt-atlantique.fr (M. Mohammadi)

reproduced or reworked in order to bring them into conformance. Therefore, the main aim of CI is minimizing the production cost by early detection of the nonconforming products as well as maximizing customer satisfaction through removing the defective products before being sold (Hinrichs, 2011; Etienne et al., 2016). During CI, the production process is temporarily stopped and all products (i.e., 100% frequency) or a sample of products are inspected to verify whether the most important quality characteristics meet the design specifications. Since stopping the production process results in a significant decrease in both yield and productivity, MI, with a lower frequency than CI, can be performed as a process status verifier, whereby critical processing features (e.g., feed speed of a drilling machine, force, temperature ant etc.) are monitored not to deviate from their set value.

Decisions regarding the implementation of CI and/or MI highly depend on the importance of the quality characteristics. For example, CI is implemented on quality characteristics, which directly correspond to the product function and even a small malfunction may highly decrease the customer satisfaction. On the other hand, MI is performed to increase the capability of the processes and to reduce the deviation from standard tolerances and ultimately, to minimize the number of defective/nonconforming products. Although simultaneous implementation of both CI and MI to secure quality characteristics is considered as the most reliable way to decrease the number of defectives and respectively reach the highest customer satisfaction level, due to recourse limitations, this consideration is mainly impractical as the total production cost would significantly be increased. Therefore, a trade-off between the production cost and customer satisfaction should be made to set the optimum inspection plan.

In addition to the elaborated concerns, lack of information about the production processes and several environmental factors impose a degree of uncertainty to the inspection planning decisions (Galbraith, 1973; Ho, 1989). Although uncertainty and manufacturing variations (e.g., performance degradation and non-conformance to specifications) are almost inevitable in practice, classical methods mainly consider deterministic conditions during the planning of an inspection process; while manufacturing processes are stochastic in nature. Consequently, a percent of the manufactured products do not conform the design specifications and the concerned process is sensitive to manufacturing variations. Traditionally, tight tolerance or higher precision manufacturing process was being applied to cope with this challenge, which mainly led to a huge manufacturing cost. Hence, manufacturers are interested in less sensitive manufacturing processes. These manufacturing processes are called robust processes that are relatively insensitive to alteration of uncertain parameters.

Finally, robust planning of an inspection process to pick out the critical quality characteristics and to determine the type and the location of the inspections is the main problem that this paper attempts to address.

The main contributions of this paper, which differentiate our efforts from those already published on the subject, are as follows:

- Effectively integrating inspection plan with the production plan by performing inspection activities during the process instead of having an acceptance or a rejection check at the end. This integration minimizes the production cost by early detection of the nonconforming products.
- Considering the monitoring inspection alongside the conformity inspection to monitor the processing parameters and avoid the creation of nonconforming products.
- Proposing a new bi-objective mixed-integer linear programming (BOMILP) model for planning an inspection process.
- Making trade-off between two important targets in almost all industries as manufacturing cost and customer satisfaction. These targets have been formulated as the objective functions of the proposed mathematical model.
- Taking into account the uncertainty of the input parameters by developing a global robust approach based on the Taguchi loss function and the Monte Carlo simulation method.
- Studying a real industrial case from a leading automotive industry in France to validate the performance of the proposed model and the robust solution approach.
- Developing a tailored meta-heuristic algorithm, namely differential evolution (DE), to solve the real industrial case.
- Investigating the sensitivity of the objective functions to the input parameters and extracting valuable managerial insights.

The rest of this paper is organized as follow. [Section 2](#) reviews the relevant papers in the literature. [Section 3](#) explains the proposed BOMILP model. [Section 4](#) describes the global robust optimization approach. The solution algorithm is explained in [Section 5](#). The experimental results of the real industrial case are provided in [Section 6](#) and finally the paper is concluded in [Section 7](#).

## 2. Literature review

Inspection planning problems have been studied by many researchers since the 1960s. [Lindsay and Bishop \(1964\)](#) proposed a basic conceptual model and considered perfect inspection accuracy for workstations of attribute data (WAD), in which all rejected items were scrapped. They also assumed that the inspection station could only check the outcome of the immediately preceding workstation. The extension of their study was proposed by [White \(1966\)](#) where the rejected items are replaced with conforming ones. [Hurst \(1973\)](#) first planned an inspection process by considering both type I and type II inspection errors. [Peters and Williams \(1984\)](#) provided five heuristic decision rules to find the location of the inspections. Later, [Yum and McDowell \(1987\)](#) extended the formulation of this problem in form of a mixed-integer linear programming model by adding the consideration of a rework activity. [Chakravarty and Shtub \(1987\)](#) investigated the effect of setup and inventory carrying costs on the inspection strategy (i.e., "all or none" versus partial inspection). They suggested a shortest path heuristic method to determine the strategic location of inspection activities and production lot sizes. [Barad \(1990\)](#) presented a solution-oriented technique based on the concept of break-even quality level. [Viswanadham et al. \(1996\)](#) mathematically modeled the location problem of inspections in an MPS and developed two stochastic search algorithms for solving the problem, one based on simulated annealing (SA) and the other on genetic algorithm (GA). Their algorithms were developed to determine the location of the inspections resulting in a minimum expected total cost. Similarly, [Bai and Yun \(1996\)](#) constructed a cost model and a method for finding optimal locations of inspections and inspection level in an MPS. [Lee and Unnikrishnan \(1998\)](#) developed a mathematical model in order to solve the inspection allocation and assignment problems in an MPS, in which different part types with distinctive machine visitation sequences are processed and inspections can be performed on one of the several inspection stations with possible inspection errors. [Verduzco et al. \(2001\)](#) presented real-time inspection allocation that is based on the information gained by inspecting one additional component. They modeled the selection of which components to inspect as an information maximization problem. Besides, a modified knapsack greedy heuristic method was used to find near-optimal solutions to this optimization problem within the required time constraints. Regarding the integration of the production process and the inspection plan, [Lee and Kim \(2001\)](#) proposed an optimization model to integrate the inspection planning and scheduling using simulation-based genetic algorithms. The performance measures based on the process plan combinations calculated by a simulation module instead of process plan alternatives and the calculated measures are fed into a GA in order to improve the solution quality until the scheduling objectives are satisfied. [Emmons and Rabinowitz \(2002\)](#) studied the planning of the layout and operation of an inspection process used to detect malfunctioning processors in an MPS. Their planning involved three inter-related decisions: (i) the overall inspection capacity, (ii) the assignment of inspection activities to the inspectors and (iii) the scheduling of the inspector's tasks. [Kogan and Raz \(2002\)](#) proposed a mathematical model of managing the intensity, sequence and timing of inspections in an  $N$ -stage production system with  $M$  inspection activities possible at each stage in order to minimize the sum of the inspection costs and the penalties caused by undetected defects. [Shiau \(2002, 2003a\)](#) studied the inspection resource assignment problem in a multi-stage manufacturing system by considering the inspection errors. They considered a limited number of inspections to be allocated through the production process. The author also considered the inspection errors that happen due to rapid changes of tolerances to satisfy the customer requirements.

Additionally, [Shiau \(2003b\)](#) studied inspection-allocation planning (IAP) problem for a multiple-characteristic manufacturing system, in which the production recourses are restricted and the limited number of inspections is considered for solving the IAP problem. This paper solved the IAP problem using a unit cost model, in which the manufacturing capability, the inspection capability, and specified tolerances are simultaneously considered. [Rau and Chu \(2005\)](#) considered inspection allocation problems for an MPS with two types of workstations, workstation of attribute data (WAD) and workstation of variable data (WVD), in which three strategies for the treatment of detected nonconforming units (i.e., repair, rework and scrap) were assumed. They developed a profit model for optimally allocating inspections and a heuristic solution method to solve the model. [Hanne and Nickel \(2005\)](#) developed a multi-objective inspection planning model considering objectives with respect to the quality (no. of defects), project makespan, and costs within a software development (SD) project. The developed model of SD processes includes different phases as coding, inspection, test, and rework and comprises the assignment of operations to the operators and the generation of a project schedule. [Shiau et al. \(2007\)](#) integrated the production process and the inspection planning while higher performance of a production industry can be realized if the process and the inspection plans become integrated to cope with the limited manufacturing resources. They also developed a GA for solving large-sized problems. In a different work,

Ferreira et al. (2009) proposed an optimization model, in which decisions on determining the inspection intervals for MI under the failure of equipment and the decision maker preferences about the cost and the downtime are made simultaneously. Colledani and Tolio (2006) proposed an approach to evaluate the overall performance of a system considering both quality and production logistics. The results obtained by the application of the method provided new insight in the relations among the two areas and paved the way to the joint design of production logistics and quality control systems. In a similar work, Colledani and Tolio (2012) presented a general theory to combine quality, maintenance and production control contexts in an MPS in order to analyze the production rate of conforming products in the manufacturing systems with progressively deteriorating machines and preventive maintenance. In addition, due to the increasing pressure on high precision manufacturing and the development of on-line measurement technologies, Colledani et al. (2014a) presented an integrated quality and production logistics model to profitably manage the trade-off between selective and adaptive assembly systems in emerging sectors, such as micro-production, biomedical and e-mobility industry. In another work, Colledani et al. (2014b) proposed the production quality as a new paradigm aiming at going beyond traditional six-sigma approaches. Their new paradigm is extremely relevant in various technology intensive and emerging strategic manufacturing sectors. They claimed that the traditional six-sigma techniques show strong limitations in highly changeable production contexts, characterized by small batch productions, customized, or even one-of-a-kind products, and in-line product inspections. Therefore, innovative and integrated quality, production logistics and maintenance design, management and control methods as well as advanced technological enablers have a key role to achieve the overall production quality goal. Finally, they revised problems, methods and tools to support this paradigm. Mohammadi et al. (2014a) developed an optimization framework for process inspection planning of an MPS with multiple quality characteristics. They developed a single-objective mixed-integer mathematical programming model to minimize the sum of manufacturing and warranty costs. They also investigated the effect of uncertainty in misadjustment and attempted to provide a robust inspection plan.

Regarding the uncertainty in the input parameters, Kanyamibwa and Ord (2000) developed a form of the loss function considering the variability of a production process, the decision loss, and the costs of sampling and inspection. Specifically, they considered monitoring a production process, which may undergo continuous mean shift and variance deterioration during a production run. Kallgren et al. (2003) reviewed the present status of the role of measurement uncertainty in conformity assessment. Macii et al. (2003) studied a theoretical analysis aimed at estimating the growth in decisional risks due to both random and systematic errors. Also, they provided some useful guidelines about how to choose the test uncertainty ratio of industry-rated measurement instruments in order to limit the risk of making wrong decisions below a maximum preset value. Pajula and Ritala (2006) illustrated through a case study, how the control a structure design that has been affected by uncertainty and how the corresponding dynamic problem is defined and solved with rather regular tools. The interested readers are referred to the recent review of impact of uncertainty in production inspection done by Desimoni and Brunetti (2011).

From the other aspect, some researchers have considered uncertainty in terms of risk in manufacturing processes. Bassetto et al. (2011) presented the concept of risk typology and its use in the management of process control deployment at a fab-wide level. They provided a comprehensive method based on the failure mode effect and criticality analysis (FMECA) to control failures that count throughout an organization. Khan and Haddara (2003) presented a new methodology for risk-based maintenance-inspection planning. They proposed a comprehensive and quantitative methodology that comprises three main modules; namely, risk estimation module, risk evaluation module and maintenance-inspection planning module.

Regardless of the context, several approaches have been developed to cope with the inherent uncertainty of the input parameters (see Zahiri et al., 2014a; Mousazadeh et al., 2015; Zahiri et al., 2015; Rezaei-Malek et al., 2016; Zahiri et al., 2016; Zahiri and Pishvae, 2016; Zahiri et al., 2017), out of which, the robust design has been shown to be the most effective technique in manufacturing process to better address the manufacturing variations and uncertainty of the corresponding input parameters (Xiaoping and Chen 2000; Beiqing and Du, 2006; Hans-Georg and Sendho, 2007; Chen et al., 1996; Arvidsson and Gremyr, 2008; Torben et al., 2009; Gyung-Jin and Hee-Lee, 2002; Khalaj et al., 2012; Michael, 2013; Mechri et al, 2014).

Almost all of the above-reviewed papers have only focused on allocating the inspection activities during the production process without considering other decisions such as picking out the critical quality characteristics to be inspected and selecting the type of inspection activities (i.e., MI and/or CI). Despite the literature, this paper integrates the inspection plan with the production process to simultaneously pick out the critical quality characteristics and to determine the type and the location of the inspections. Additionally, this paper takes into account the uncertainty of the input parameters and investigates the

effect of uncertainty on the final decisions. Comprehensively, this integration problem under uncertainty is presented as a new robust bi-objective MILP model with a trade-off between the production cost and the customer satisfaction as the two conflicting objective functions. There is no model in the literature that is able to effectively and efficiently address all of these challenges. The proposed model and the solution approaches are validated through a real industrial case study from one of the leading automotive industries in France. Finally, the sensitivity of the objective functions to the uncertain parameters is investigated to draw valuable managerial insights.

### 3. Problem description and mathematical formulation

This section, first, describes the problem and main decisions that need to be made; and, second, develops the mathematical formulation based on a bi-objective mixed-integer linear programming model.

#### 3.1. Problem description

Consider a serial MPS with  $N$  stages, in which an in-process part passes through stages 1 to  $N$  sequentially and inspections are performed at  $m$  stages where  $m \leq N$ . It should be noted that each stage can be an operation and a set of operations can be performed on the same machine. At each stage, a unique operation is performed on the part and a new quality characteristic is created in the part. The output of this stage is transferred to an inspection station or to the next processing stage. Suppose that a part consists of  $K$  quality characteristics and all these characteristics are created during the production process. A part is “nonconforming” if at least one quality characteristic does not meet the design specifications. If a CI is performed between stages  $i$  and  $i+1$ , there is an opportunity to detect the nonconforming parts originated from the  $i$ th stage or at some of the earlier stages. The detected nonconforming parts are scrapped and no further rework is allowed. On the other hand, if an MI is performed between stages  $i$  and  $i+1$ , the processing features are monitored after a specific number of parts. An inspection activity may involve two types of errors: misclassification of a conforming part as nonconforming (error type I) and nonconforming one as conforming (error type II).

This paper plans the inspection process through two main decisions as (1) *which* quality characteristics need *what* kind of CI or/and MI inspections (i.e., *which-what* decision) and (2) *when* the inspection of these characteristics should be performed (i.e., *when* decision). For the first decision, although those characteristics that have more impact on the product functionality and significantly affect the customer satisfaction should be picked out, but all the characteristics cannot be inspected while the inspection cost is highly increased. The second decision about the location of the inspections is also challenging, in which the inspection of a characteristic can be done just at special stages across the production process. For example, the process cannot be stopped or accessibility to and measuring that characteristic is impossible unless in some further stages. In addition, finding and removing nonconforming parts at initial stages is desired where nonconforming parts do not unnecessarily go through further operations and the cost of production is consequently decreased. Hence, it is more sensible to detect non-conformity immediately after its originating stage and before the next operation starts, but the number of inspection stations and the process interruptions as well as the total cost of inspection are increased. As an example, consider a situation that each characteristic is inspected immediately after its creation. Since each inspection activity includes three steps as: (1) removing the part from the machine, (2) inspecting and (3) setting up the part for the next operation; these steps are unnecessarily repeated for each characteristic. On the other hand, when a set of characteristics is inspected at a same allowable stage, the removing and setting up steps are needed only once. Therefore, making right and optimal *which-what* and *when* decisions are challenging and that this paper aims at coping with this challenge. [Figure 1](#) shows the flowchart of the inspection planning decisions.

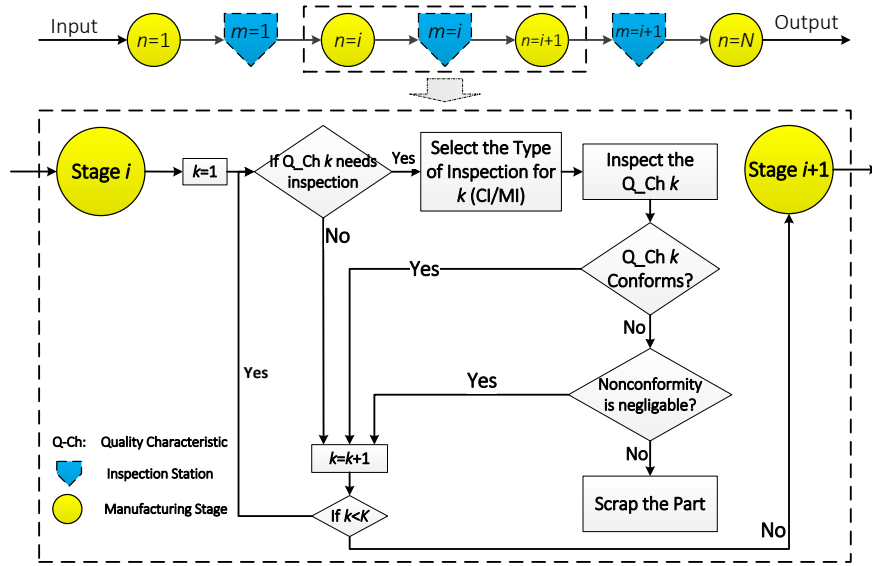


Figure 1. Inspection planning flowchart

### 3.2. Assumptions

The considered assumptions of the proposed BOMILP are listed as follows:

- The production system contains  $N$  manufacturing stages arranged serially, wherein one part type is processed with  $K$  identical quality characteristics,
- Different quality characteristics may be processed in a same manufacturing stage,
- Non-conformities are generated only at the manufacturing processes and other activities such as movement, setup and inspection activities do not make non-conformity,
- Each manufacturing stage has a failure rate of producing nonconforming parts,
- Two types of conformity (CI) and monitoring (MI) inspections are considered, while considering MI for a manufacturing stage decreases the failure rate of that stage,
- CI subjects to both errors type I and II,
- The frequency of MI is fixed,
- MI affects the mean value of the process capability statistics such as  $P_{pk}$ ,
- Detected nonconforming items from CI are directly scrapped and no rework or repair operation is considered,
- A unit scrap cost is imposed to the system in case of detecting a nonconforming part. The scrap cost depends on both the number of manufacturing stage and the quality characteristics,
- The production system reaches a steady state and system breakdown is not assumed,
- Input parameters of the problem are considered to be uncertain,
- In the robust model, we consider misadjustment that affects  $C_{pk}$  and  $P_{pk}$  as well as failure and scrap rates.

### 3.3. Notations

Necessary notations for the proposed mathematical formulation are provided as follows:

#### Sets:

- $p, p' \in \{1, 2, \dots, P + 1\}$  Set of operations  
 $k \in \{1, 2, \dots, K\}$  Set of different quality characteristics

#### Parameters:

- $fr_{pk}^1$  Failure rate of operation  $p$  for characteristic  $k$  with monitoring inspection  
 $fr_{pk}^2$  Failure rate of operation  $p$  for characteristic  $k$  without monitoring inspection  
 $d_{pk}$  Detection rate of conformity inspection assigned to operation  $p$  for characteristic  $k$   
 $\alpha_{pk}$  Type I error of conformity inspection assigned to operation  $p$  for characteristic  $k$   
 $\beta_{pk}$  Type II error of conformity inspection assigned to operation  $p$  for characteristic  $k$  ( $\beta_{pk} = 1 - d_{pk}$ )  
 $n_T$  Total number of parts fed to the production process  
 $pc_p$  Unit production cost per time for operation  $p$

$pt_p$	Production time of operation $p$
$sc_p$	Scrap cost of parts immediately after operation $p$
$nc_k$	Cost of nonconforming part in the market due to characteristic $k$
$fm_{pk}$	Fixed cost of an MI station after operation $p$ for characteristic $k$
$fc_{pk}$	Fixed cost of a CI station after operation $p$ for characteristic $k$
$vm_{pk}$	Unit variable cost of MI per time performed after operation $p$ for characteristic $k$
$vc_{pk}$	Unit variable cost of CI per time performed after operation $p$ for characteristic $k$
$mt_{pk}$	Time of MI performed after operation $p$ for characteristic $k$
$ct_{pk}$	Time of CI performed after operation $p$ for characteristic $k$
$fs_p$	Fixed space cost per part of establishing inspection stations just after operation $p$
$\zeta_{p'p}$	Is 1 if two operations $p'$ and $p$ are dependent; and 0, otherwise
$\psi_{pk}$	Is 1 if characteristic $k$ belongs to operation $p$ ; and 0, otherwise
$mf_k$	Monitoring frequency for characteristic $k$
$cf_k$	Conformity frequency for characteristic $k$
$G_k$	Relative importance of characteristic $k$
$M$	A big number

### Decision Variables:

$NP_{pk}$	Number of nonconforming parts due to characteristic $k$ from operation $p$
$YC_{pk}$	1 if operation $p$ needs CI for characteristic $k$ ; and 0, otherwise
$YM_{pk}$	1 if operation $p$ needs MI for characteristic $k$ ; and 0, otherwise
$XC_{p'p}^k$	1 if CI of operation $p'$ for characteristic $k$ is performed immediately after operation $p$ ( $p' \leq p$ ); and 0, otherwise
$XM_{p'p}^k$	1 if MI of operation $p'$ for characteristic $k$ is performed immediately after operation $p$ ( $p' \leq p$ ); and 0, otherwise
$N_p$	Number of parts entering operation $p$
$NM_{pk}$	Number of MI performed between operations $p$ and $p+1$ for characteristic $k$
$NC_{pk}$	Number of CI performed between operations $p$ and $p+1$ for characteristic $k$
$NS_p$	Is 1 if there is an inspection station between operations $p$ and $p+1$
$S_{pk}$	Number of the scrapped part between operations $p$ and $p+1$ due to characteristic $k$
$S_p$	Total number of the scrapped parts between operations $p$ and $p+1$
$OFV_\tau$	$\tau$ th objective function value.

### 3.4. Mathematical formulation

This section develops the proposed BOMILP model by mathematically representing the *which-what* and *when* decisions. The first objective function of the model minimizes the total manufacturing cost which includes costs associated with production ( $TCP$ ), scrap ( $TCS$ ) and inspection ( $TCI$ ). Total inspection cost contains total fixed inspection cost ( $TCIF$ ) and total variable inspection cost ( $TCIV$ ), where  $TCI=TCIF+TCIV$ . The second objective function minimizes the customer satisfaction. Since customer satisfaction is typically a qualitative factor, in this paper, minimizing the total warranty cost ( $TCW$ ) is considered to capture customer satisfaction. Warranty cost is the cost when a nonconforming part reaches the customer and the company has to compensate the damages.

Through an inspection process plan, two different strategies can be adopted as well. First, a strategy considers that all characteristics need inspection and at most one kind of inspection (i.e., MI or CI) should be performed. Second, by relaxing some restrictions of the first strategy, it is considered that none, one or both of MI and CI (i.e., MI or/and CI) can be performed for each characteristic. Hereafter, the first and second strategies are called MI-or-CI and MI-and-CI strategies, respectively.

#### 3.4.1. Objective functions

The objective functions of the model are mathematically formulated as Equations (1) and (2), respectively. Hereafter, the first and second objective functions are called as internal and external costs, respectively.

$$OFV_1 = \min\{TCP + TCS + TCIF + TCIV\} \quad (1)$$

$$OFV_2 = \min\{TCW\} \quad (2)$$

where,



$$TCP = \sum_{p=1}^P pc_p pt_p N_p \quad (3)$$

$$TCS = \sum_{p=1}^P sc_p S_p \quad (4)$$

$$TCIF = \sum_{p=1}^P \sum_{k=1}^K fc_{pk} NC_{pk} + \sum_{p=1}^P \sum_{k=1}^K fm_{pk} NM_{pk} + \sum_{p=1}^P fs_p NS_p N_p \quad (5)$$

$$TCIV = \sum_{p=1}^P \sum_{k=1}^K cf_k ct_{pk} vc_{pk} N_p XC_{p'p}^k + \sum_{p=1}^P \sum_{k=1}^K mf_k mt_{pk} vm_{pk} N_p XM_{p'p}^k \quad (6)$$

$$TCW = \sum_{p=1}^P \sum_{k=1}^K G_k n_{C_k} (NP_{pk} YC_{pk} \beta_{pk} + NP_{pk} \times YM_{pk}) \quad (7)$$

### 3.4.2. Constraints

The constraints of the model have been provided as Constraints (8) to (18).

$$\sum_{p=p'}^P \zeta_{p'p} XC_{p'p}^k = \psi_{p'k} YC_{p'k} \quad \forall p', k; p' \leq P \quad (8)$$

$$\sum_{p=p'}^P \zeta_{p'p} XM_{p'p}^k = \psi_{p'k} YM_{p'k} \quad \forall p', k; p' \leq P \quad (9)$$

$$YC_{p'k} + YM_{p'k} = \psi_{p'k} \quad \forall p', k \quad (10)$$

$$NP_{pk} = N_p \times YM_{pk} fr_{pk}^1 + N_p \times YC_{pk} fr_{pk}^2 \quad \forall p, k; p \leq P \quad (11)$$

$$S_{pk} \geq \left[ XC_{p'p}^k \times NP_{p'k} \times d_{pk} \right] + \left[ XC_{p'p}^k \times N_p \times \alpha_{pk} - XC_{p'p}^k \times NP_{p'k} \times \alpha_{pk} \right] - \left[ XC_{p'p}^k \times NP_{p'k} \times \beta_{pk} \right] \quad \forall p, p', k; p, p' \leq P \quad (12)$$

$$S_p \geq S_{pk} \quad \forall p, k; p \leq P \quad (13)$$

$$N_p = N_{p-1} - S_{p-1} \quad \forall p; p \leq P + 1 \quad (14)$$

$$N_0 = n_T \quad (15)$$

$$NM_{pk} \geq \sum_{p'=1}^P XM_{p'p}^k \quad \forall p, k; p \leq P \quad (16)$$

$$NC_{pk} \geq \sum_{p'=1}^P XC_{p'p}^k \quad \forall p, k; p \leq P \quad (17)$$

$$M \times NS_p \geq \sum_{p'=1}^P \sum_{k=1}^K (XC_{p'p}^k + XM_{p'p}^k) \quad \forall p, p', k; p, p' \leq P \quad (18)$$

Equations (8) and (9) ensure that CI and MI of a quality characteristic should be done for all part just in one inspection stage, respectively. Equation (10) forces that one kind of inspection is needed for each quality characteristic. This equation is directly related to the MI-or-CI strategy. Equation (11) relates that the failure rate of an operation to the decision whether the MI is considered for that characteristic or not. Constraints (12) and (13) calculate the number of scraps after each inspection stage based on type I and type II errors. Constraints (14) and (15) determine the in-process part after each operation, where the number of parts is decreased in presence of any inspection due to scrap detection and removal. Equations (16) and (17) calculate total number of MIs and CIs throughout the whole production system. Constraint (18) calculates different inspection stage among the whole process.

### 3.4.3. Linearization

As it can be seen, the objective functions and some of the constraints include nonlinear terms and this issue makes the model difficult to solve. In order to address that, a linearization technique is applied to linearize the nonlinear terms. In this technique, the product of each pair of variables is replaced by a

new auxiliary variable and three extra constraints are added to the model for each pair. It must be noted that this technique is used when at least one of the variables is binary variable. For example, consider a binary variable  $X$  and a real variable  $Y$ . The problem is to linearize the product of these two variables (i.e.,  $X \times Y$ ). Therefore, a new real auxiliary variable  $Z$  is considered. Next, the term  $X \times Y$  is replaced by  $Z$  in the whole model. Finally, the following three constraints should be added accordingly.

$$\begin{aligned} Z &\leq M \times X, \\ Z &\leq Y, \\ Z &\geq Y - M(1 - X). \end{aligned}$$

Necessary auxiliary variables are provided as follows.

**Auxiliary variables:**

$\mathbb{A}_{p'p}^k$	Linear form of $XC_{p'p}^k \times N_{p'}$ .
$\mathbb{B}_{p'p}^k$	Linear form of $XM_{p'p}^k \times N_{p'}$ .
$\mathbb{D}_{p'p}^k$	Linear form of $XC_{p'p}^k \times NP_{p'k}$ .
$\mathbb{E}_{pk}$	Linear form of $NP_{pk} \times YC_{pk}$ .
$\mathbb{F}_{pk}$	Linear form of $NP_{pk} \times YM_{pk}$ .
$\mathbb{L}_p$	Linear form of $NS_p \times N_p$ .
$\mathbb{U}_{pk}$	Linear form of $N_p \times YC_{pk}$ .
$\mathbb{V}_{pk}$	Linear form of $N_p \times YM_{pk}$ .

**3.4.4. The proposed BOMILP model under MI-or-CI strategy**

After adding the linearization constraints (i.e., Constraints (23) to (46)), the final proposed BOMILP model under *MI-or-CI* strategy is proposed as follows.

**BOMILP (MI-or-CI):**

$$\begin{aligned} \min OFV_1 = & \sum_{p=1}^P pc_p pt_p N_p + \sum_{p=1}^P sc_p S_p + \sum_{p=1}^P \sum_{k=1}^K fc_{pk} NC_{pk} + \sum_{p=1}^P \sum_{k=1}^K cf_k ct_{pk} vc_{pk} \mathbb{A}_p \\ & + \sum_{p=1}^P \sum_{k=1}^K fm_{pk} NM_{pk} + \sum_{p=1}^P \sum_{k=1}^K mf_k mt_{pk} vm_{pk} \mathbb{B}_p + \sum_{p=1}^P fS_p \mathbb{L}_p \end{aligned} \quad (19)$$

$$\min OFV_2 = \sum_{p=1}^P \sum_{k=1}^K G_k nc_k (\mathbb{E}_{pk} \beta_{pk} + \mathbb{F}_{pk}) \quad (20)$$

s.t.: (8)-(11), (13)-(18)

$$NP_{pk} = \mathbb{V}_{pk} fr_{pk}^1 + \mathbb{U}_{pk} fr_{pk}^2 \quad \forall p, k; p \leq P \quad (21)$$

$$\begin{aligned} S_{pk} \geq & \left[ \mathbb{D}_{p'p}^k \times d_{pk} \right] + \left[ \mathbb{A}_{p'p}^k \times \alpha_{pk} - \mathbb{D}_{p'p}^k \times \alpha_{pk} \right] \\ & - \left[ \mathbb{D}_{p'p}^k \times \beta_{pk} \right] \quad \forall p, p', k; p, p' \leq P \end{aligned} \quad (22)$$

$$\mathbb{A}_{p'p}^k \leq M \times XC_{p'p}^k \quad \forall p, p', k; p, p' \leq P \quad (23)$$

$$\mathbb{A}_{p'p}^k \leq N_{p'} \quad \forall p, p', k; p, p' \leq P \quad (24)$$

$$\mathbb{A}_{p'p}^k \geq N_{p'} - M(1 - XC_{p'p}^k) \quad \forall p, p', k; p, p' \leq P \quad (25)$$

$$\mathbb{B}_{p'p}^k \leq M \times XM_{p'p}^k \quad \forall p, p', k; p, p' \leq P \quad (26)$$

$$\mathbb{B}_{p'p}^k \leq N_{p'} \quad \forall p, p', k; p, p' \leq P \quad (27)$$

$$\mathbb{B}_{p'p}^k \geq N_{p'} - M(1 - XM_{p'p}^k) \quad \forall p, p', k; p, p' \leq P \quad (28)$$

$$\mathbb{V}_{p'k} \leq M \times YM_{p'k} \quad \forall p, p', k; p, p' \leq P \quad (29)$$

$$\mathbb{V}_{p'k} \leq N_{p'} \quad \forall p, p', k; p, p' \leq P \quad (30)$$

$$\mathbb{V}_{p'k} \geq N_{p'} - M(1 - YM_{p'k}) \quad \forall p, p', k; p, p' \leq P \quad (31)$$

$$\mathbb{U}_{p'k} \leq M \times YC_{p'k} \quad \forall p, p', k; p, p' \leq P \quad (32)$$

$$\mathbb{U}_{p'k} \leq N_{p'} \quad \forall p, p', k; p, p' \leq P \quad (33)$$

$$\mathbb{U}_{p'k} \geq N_{p'} - M(1 - YC_{p'k}) \quad \forall p, p', k; p, p' \leq P \quad (34)$$

$$\mathbb{D}_{p'p}^k \leq M \times XC_{p'p}^k \quad \forall p, p', k; p, p' \leq P \quad (35)$$

$$\mathbb{D}_{p'p}^k \leq NP_{p'k} \quad \forall p, p', k; p, p' \leq P \quad (36)$$

$$\mathbb{D}_{p'p}^k \geq NP_{p'k} - M(1 - XC_{p'p}^k) \quad \forall p, p', k; p, p' \leq P \quad (37)$$

$$\mathbb{E}_{p'k} \leq M \times YC_{p'k} \quad \forall p', k; p' \leq P \quad (38)$$

$$\mathbb{E}_{p'k} \leq NP_{p'k} \quad \forall p', k; p' \leq P \quad (39)$$

$$\mathbb{E}_{p'k} \geq NP_{p'k} - M(1 - YC_{p'k}) \quad \forall p', k; p' \leq P \quad (40)$$

$$\mathbb{F}_{p'k} \leq M \times YM_{p'k} \quad \forall p', k; p' \leq P \quad (41)$$

$$\mathbb{F}_{p'k} \leq NP_{p'k} \quad \forall p', k; p' \leq P \quad (42)$$

$$\mathbb{F}_{p'k} \geq NP_{p'k} - M(1 - YM_{p'k}) \quad \forall p', k; p' \leq P \quad (43)$$

$$\mathbb{L}_p \leq M \times NS_p \quad \forall p; p \leq P \quad (44)$$

$$\mathbb{L}_p \leq N_p \quad \forall p; p \leq P \quad (45)$$

$$\mathbb{L}_p \geq N_p - M(1 - NS_p) \quad \forall p; p \leq P \quad (46)$$

$$XC_{p'p}^k, XM_{p'p}^k, NS_p, Y_p, YC_{p'k}, YM_{p'k} \in \{0,1\} \quad \forall p, p'; p, p' \leq P \quad (47)$$

$$S_{pk}, S_p, \mathbb{D}_{p'p}^k, NM_{pk}, NC_{pk}, A_{p'p}^k, \mathbb{B}_{p'p}^k, NP_{pk}, \mathbb{E}_{p'k}, \mathbb{F}_{p'k}, \mathbb{L}_p, N_p \geq 0 \quad \forall p', p, k; p', p \leq P \quad (48)$$

where, Constraints (47) and (48) are domain constraint.

### 3.4.5. The proposed BOMILP model under MI-and-CI strategy

This section develops a BOMILP under the MI-and-CI strategy.

#### BOMILP (MI-and-CI):

$$\begin{aligned} \min OFV_1 = & \sum_{p=1}^P pc_p pt_p N_p + \sum_{p=1}^P sc_p S_p + \sum_{p=1}^P \sum_{k=1}^K fc_{pk} NC_{pk} + \sum_{p=1}^P \sum_{k=1}^K cf_k ct_{pk} vc_{pk} A_p \\ & + \sum_{p=1}^P \sum_{k=1}^K fm_{pk} NM_{pk} + \sum_{p=1}^P \sum_{k=1}^K mf_k mt_{pk} vm_{pk} \mathbb{B}_p + \sum_{p=1}^P fS_p \mathbb{L}_p \end{aligned} \quad (19)$$

$$\min OFV_2 = \sum_{p=1}^P \sum_{k=1}^K G_k nc_k (\mathbb{E}_{pk} \beta_{pk} + \mathbb{F}_{pk}) \quad (20)$$

s.t.: (8), (9), (11), (13)-(18), (21)-(48)

$$YC_{p'k} + YM_{p'k} \leq 2\psi_{p'k} \quad \forall p', k \quad (49)$$

## 4. Global robust optimization

As mentioned in [Section 1](#), lack of information about production processes and several environmental factors imposes a degree of uncertainty to the planning parameters, which directly affect other decisions relating to the inspection process ([Galbraith, 1973](#); [Ho, 1989](#)). In most of the manufacturing industries, a minimum level of uncertainty is inevitable. There are several parameters in the proposed BOMILP model that are affected by environmental factors and may fluctuate over the time. These parameters are production and inspection times, errors type I and II of the inspection activities, dispersion and misadjustment of the production processes. It should be noted that uncertainty in errors type I and II directly affects the number and cost of scraps and indirectly influences the warranty cost. In addition, uncertainty in dispersion and misadjustment of a process affects the failure rate and the number of scraps as depicted in [Figures 2](#) and [3](#), respectively. Hence, manufacturers are interested in less sensitive manufacturing processes to the uncertain parameters. These manufacturing processes are called robust processes, which are relatively insensitive to alteration of the uncertain parameters. The main goal of this section is to take into account the uncertainty in the BOMILP's parameters and to design a global robust BOMILP (RBOMILP) model.

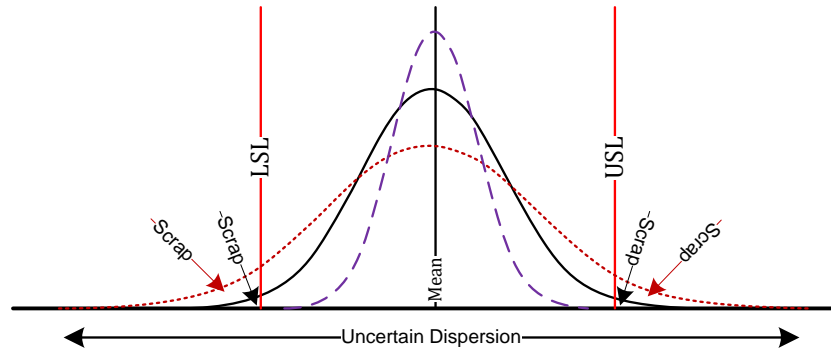


Figure 2. Uncertainty in dispersion

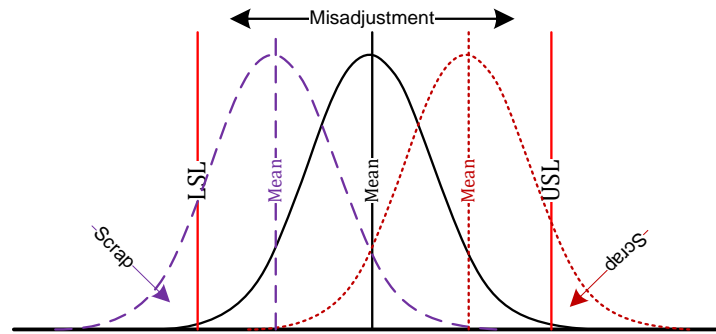


Figure 3. Uncertainty in misadjustment

In order to design a robust inspection process, two methods have been proposed as follows (Das, 2000; Beyer et al., 2002):

- Optimizing the expected value of the objective function under different alterations in the uncertain input parameters.
- Minimizing the variance of the objective function under different alterations in the uncertain input parameters.

It is noteworthy that not only the expectation based measure does not sufficiently take care of fluctuations of the objective function while these fluctuations are symmetric around the average value, but also a purely variance based measure does not also take the absolute value of the solution into account. Hence, an optimization problem minimizing both expected value and variance of the objective function is desired to search the robust optimal solution. For these purposes, the Taguchi method is applied as the objective function (50) that should be minimized (Gyung-Jin et al., 2006). First, the necessary notations are provided below:

#### Parameters:

$MCR$	Number of Monte Carlo runs
$\omega$	Weight factor of standard deviation in the Taguchi method
$CP_p$	Process Capability. A simple and straightforward indicator of process capability
$CPk_p$	Process Capability Index. Adjustment of $CP$ for the effect of a non-centered distribution.
$\rho_{MI}$	Uncertainty factor of the process misadjustment under MI
$\rho_{CI}$	Uncertainty factor of process misadjustment under CI
$\rho_{\sigma}$	Uncertainty factor of process dispersion
$\rho_{TP}$	Uncertainty factor of production time
$\rho_{TMI}$	Uncertainty factor of MI time
$\rho_{TCI}$	Uncertainty factor of CI time
$\rho_{e_I}$	Uncertainty factor of type I error
$\rho_{e_{II}}$	Uncertainty factor of type II error

#### Variables:

$\mu_{OFV_{\tau}}$	Expected value of the $\tau$ th objective function
$\sigma_{OFV_{\tau}}$	Standard deviation of the objective function
$R_{OFV_{\tau}}$	Robust value of the $\tau$ th objective function

$$R_{OFV_\tau} = \mu_{OFV_\tau} + \omega\sigma_{OFV_\tau} \quad \forall \tau = 1,2 \quad (50)$$

The alteration range for each uncertain parameter has been provided as [Table 1](#).

**Table 1.** Alteration range of the uncertain parameters

Parameters	Uniform alteration range
Misadjustment	$f r_{pk}^{MI}$ $\llbracket [1 - P\{z \leq 3 \times CP_p\} + P\{z \leq -3 \times CP_p\}], [1 - P\{z \leq 3 \times CP_p - \rho_{MI}\} + P\{z \leq -3 \times CP_p - \rho_{MI}\}] \rrbracket$
	$f r_{pk}^{CI}$ $\llbracket [1 - P\{z \leq 3 \times CPK_p\} + P\{z \leq -3 \times CPK_p\}], [1 - P\{z \leq 3 \times CPK_p - \rho_{CI}\} + P\{z \leq -3 \times CPK_p - \rho_{CI}\}] \rrbracket$
Dispersion	$f r_{pk}^{MI}$ $\llbracket [1 - P\{z \leq 3 \times \frac{CP_p}{1 - \rho_\sigma}\} + P\{z \leq -3 \times \frac{CP_p}{1 - \rho_\sigma}\}], [1 - P\{z \leq 3 \times \frac{CP_p}{1 + \rho_\sigma}\} + P\{z \leq -3 \times \frac{CP_p}{1 + \rho_\sigma}\}] \rrbracket$
	$f r_{pk}^{CI}$ $\llbracket [1 - P\{z \leq 3 \times \frac{CPK_p}{1 - \rho_\sigma}\} + P\{z \leq -3 \times \frac{CPK_p}{1 - \rho_\sigma}\}], [1 - P\{z \leq 3 \times \frac{CPK_p}{1 + \rho_\sigma}\} + P\{z \leq -3 \times \frac{CPK_p}{1 + \rho_\sigma}\}] \rrbracket$
$p t_p$	$[p t_p(1 - \rho_{TP}), p t_p(1 + \rho_{TP})]$
$m t_{pk}$	$[m t_{pk}(1 - \rho_{TM}), m t_{pk}(1 + \rho_{TM})]$
$c t_{pk}$	$[c t_{pk}(1 - \rho_{TC}), c t_{pk}(1 + \rho_{TC})]$
$\alpha_{pk}$	$[\alpha_{pk}(1 - \rho_{e-I}), \alpha_{pk}(1 + \rho_{e-I})]$
$\beta_{pk}$	$[\beta_{pk}(1 - \rho_{e-II}), \beta_{pk}(1 + \rho_{e-II})]$
Misadjustment & Dispersion	$f r_{pk}^{MI}$ $\llbracket [1 - P\{z \leq 3 \times \frac{CP_p}{1 - \rho_\sigma}\} + P\{z \leq -3 \times \frac{CP_p}{1 - \rho_\sigma}\}], [1 - P\{z \leq 3 \times \frac{CP_p}{1 + \rho_\sigma} - r_{MI}\} + P\{z \leq -3 \times \frac{CP_p}{1 + \rho_\sigma} - r_{MI}\}] \rrbracket$
	$f r_{pk}^{CI}$ $\llbracket [1 - P\{z \leq 3 \times \frac{CPK_p}{1 - \rho_\sigma}\} + P\{z \leq -3 \times \frac{CPK_p}{1 - \rho_\sigma}\}], [1 - P\{z \leq 3 \times \frac{CPK_p}{1 + \rho_\sigma} - r_{CI}\} + P\{z \leq -3 \times \frac{CPK_p}{1 + \rho_\sigma} - r_{CI}\}] \rrbracket$

where  $P\{z \leq Z\}$  is the cumulative probability of standard normal distribution. In order to alter the uncertain parameters over their alteration range, a Monte Carlo simulation technique is performed.

## 5. Proposed solution algorithm

In order to solve the proposed RBOMILP model with uncertain parameters, the solution algorithm should be capable to obtain optimal or near-optimal non-dominated Pareto solutions within the reasonable time. There are several methods in the literature for providing an optimal solution for small-sized and single-objective problems, such as simplex and dynamic programming based optimization algorithms ([Taha 2006](#); [Shukla et al., 2013](#)). However, most of real problems not only are in higher sizes and solving them by the mathematical programming approaches takes the huge computational time ([Rostami et al., 2015](#); [Niakan et al., 2014](#); [Vahdani and Mohammadi, 2015](#); [Azizmohammadi et al., 2013](#); [Mohammadi et al., 2014, 2016](#)), but also they need to be treated as the multi-objective problems (MOPs).

Traditionally, there are several methods available in the literature for solving MOPs as such as goal programming ([Brandenburg, 2015](#)), weighted sum method ([Mohammadi et al., 2011](#)), and the iso-resource-cost solution method ([Zeleny 1998](#)). A negligible drawback of these methods is that none of them treats all the objectives simultaneously, except the Iso-resource-cost Solution method, which is a basic requirement in most MOPs ([Abbass et al., 2001](#)). Accordingly, the solutions may be far away from the optimal ones. Despite the single-objective problems, solving MOPs lead to a set of optimal alternative solutions and no other solutions in the search space are superior to (dominate) them when all objectives are simultaneously considered. The literature calls these alternative solutions as Pareto-optimal solutions. Having a set of solutions instead of a single solution provides flexibility for the decision maker ([Mohammadi et al., 2017](#)).

Recently, evolutionary algorithms (EAs) have been well applied for solving MOPs ([Zhalechian et al., 2016](#); [Asl-Najafi et al., 2015](#); [Zahiri et al., 2014b](#); [Mohammadi et al., 2014c](#)). EAs have some advantages comparing to traditional mathematical programming approaches. For instance, in the mathematical programming approaches, a real concern is the functions must be convex/concave and/or continuous, whereas, these are not necessary in EAs ([Abbass et al., 2001](#)). Although EAs are successful in solving MOPs, the proposed algorithms in the literature vary a lot in terms of their solutions and the way of benchmarking them with other existing algorithms. By the other words, there is no unique method for MOPs resulting to a good set of solutions for all problems.

### 5.1. Differential Evolution (DE) algorithm

In this paper, we apply a well-known EA called differential evolution (DE) algorithm (Storn and Price, 1997; Rahimi et al., 2016) for solving the proposed RBOMILP model. The approach showed promising results when compared with the imperialist competitive algorithm (Mohammadi et al., 2011), simulated annealing (Lin and Ying, 2015), particle swarm optimization (Fathi et al., 2015) and genetic algorithm (Mohammadi et al., 2014a), for solving the RBOMILP problem. Due to space limitations, this comparison will not be included in the paper.

Like other evolutionary computational algorithms, DE involves the evolution of a population of solutions with a size of  $PS$  using specific operators (i.e., mutation, crossover and selection) (Calegari et al., 1999). The initial population is often randomly generated over the variables domain. Each solution vector in the population has to be selected once as the target vector so that totally  $PS$  competitions take place in one generation. A new solution vector is generated by DE's mutation operator, in which the weighted difference between two population vectors is added to the third vector. Hence, this algorithm is named as differential evolution. Note that these three vectors are randomly selected and must be different from the target vector; therefore,  $PS$  must be at least 4. Let  $e_i, i = 1, \dots, PS$ , be the target vector, a mutated vector is generated according to Equation (51).

$$\mu_i = e_{v1} + F(e_{v2} - e_{v3}) \quad (51)$$

where  $v1, v2$ , and  $v3$  are mutually different random indices taking from  $\{1, 2, \dots, PS\}$ , and are not equal to  $i$ .  $F$  in Equation (51) is a constant real value  $\in [0, 2]$ , which controls the amplification of the differential variation (i.e.,  $e_{v2} - e_{v3}$ ) between the second and third randomly chosen population vectors. Each mutated vector shares its information with a target vector using the crossover operation in order to create new solution  $\tau_i = \{\tau_{i1}, \dots, \tau_{ij}, \dots, \tau_{iD}\}$  as the condition set (52).

$$\tau_{ij} = \begin{cases} \mu_{ij} & \text{if } rand(j) \leq CR \text{ and } j = rnbr(i) \\ e_{ij} & \text{if } rand(j) > CR \text{ and } j \neq rnbr(i) \end{cases} \quad (52)$$

where  $rand(j)$  is the  $j$ -th component of a  $D$ -dimensional uniform random number  $\in [0, 1]$  and  $rnbr(i)$  is a randomly chosen index  $\in \{1, \dots, D\}$  to ensure that at least one mutated dimensional value is used in the new created solution.

If the newly created solution dominates the target vector in terms of both objective functions, then the new solution is replaced by the target vector in the next generation. After each generation, the non-dominated solutions are extracted from the population by applying non-dominance technique (Niakan et al., 2015).

## 5.2. Non-dominance technique

Suppose that there are  $\tau$  objective functions. When the following conditions are satisfied, the solution  $x_1$  dominates another solution  $x_2$ . If  $x_1$  and  $x_2$  do not dominate each other, they are placed in the same front.

- 1) For all the objective functions, solution  $x_1$  is not worse than another solution  $x_2$ .
- 2) For at least one of the  $k$  objective functions  $x_1$  is exactly better than  $x_2$ .

Front number 1 is made by all solutions that are not dominated by any other solutions. This front is called Pareto frontier. Also front number 2 is built by all solutions that are only dominated by solutions in front number 1.

## 5.3. Termination criteria

The algorithm can be terminated with a pre-specified maximum number of generations and/or a pre-specified maximum number of function evaluations.

Figure 3 shows the flowchart of the DE algorithm and Figure 4 illustrates how Taguchi and Monte Carlo methods are applied to take uncertainty of the parameters into account and calculated the robust objective functions.

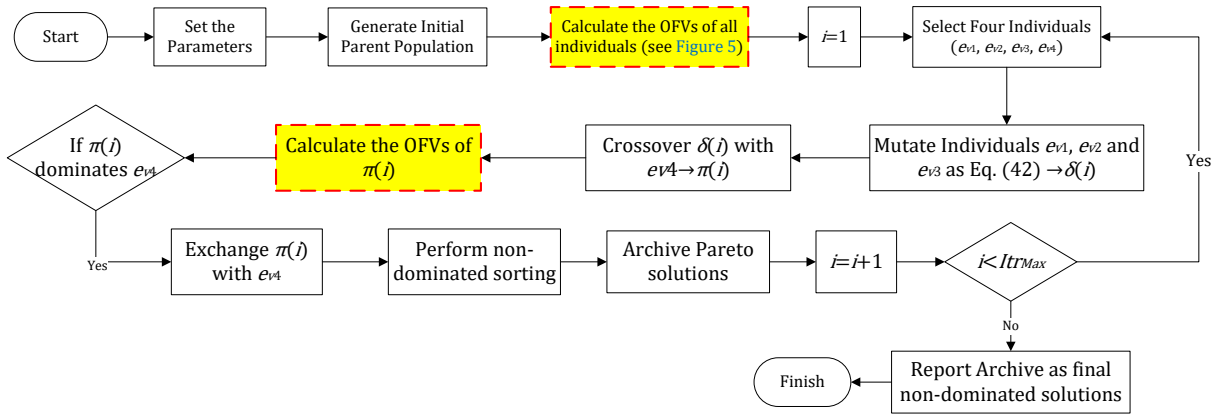


Figure 4. Main flowchart of DE algorithm

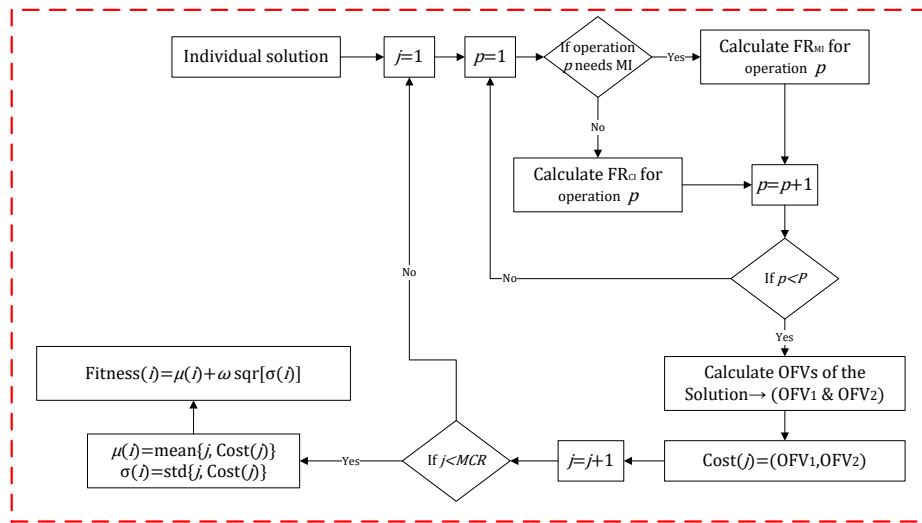


Figure 5. Taguchi and Monte Carlo methods in calculating OFVs

## 6. Case study

### 6.1. Experiment design

In order to validate the correctness of the proposed RBOMILP model and the evolutionary solution algorithm, a real industrial case is studied from one of the leading automotive industries in France. This case is a hydraulic pump with 15 quality characteristics. Figures 6 and 7, respectively, show the solid frame of the part and labeled quality characteristics which need to be inspected. Accordingly, some required deterministic information (i.e., without misadjustment) of the industrial case are tabulated as Table 2, in which the first to sixth columns explain the name of operations, the production time, the process capability  $C_p$ , the process performance  $P_{pk}$  and the failure rates with and without monitoring inspection, respectively. Finally, the last column shows the allowable places (AP) that the inspections (i.e., CI and MI) can be performed at. For example, for the characteristic number 4 belonging to the operation “Boring CY110”, MI or CI can be performed only between operations 4 to 10. The DE algorithm is written in MATLAB 2014 and run using a computer with Intel Pentium 4, 2.3 GHz CPU and 4GB RAM.

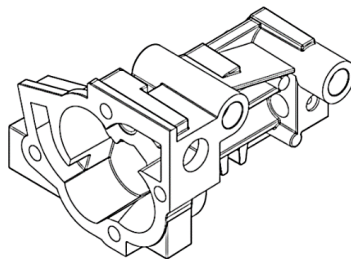


Figure 6. Solid frame of the industrial part

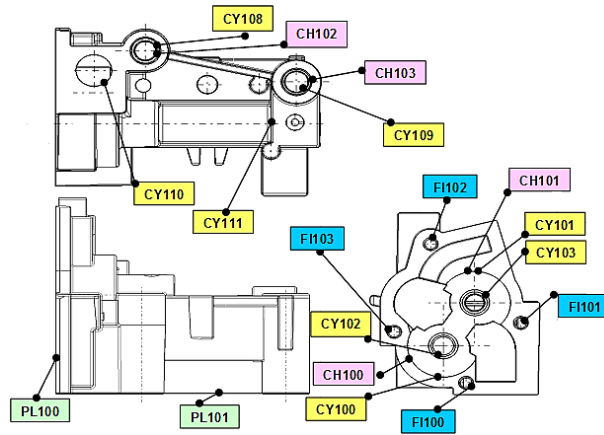


Figure 7. Labeled operations of the industrial part

Table 2. Information of the industrial case

Operation Number	Operation Name	Details					
		$PT$	$C_p$	$P_{pk}$	$FR^1$	$FR^2$	$AP$
1	Rough milling PL100	0.148	2.00	1.50	1.97e-9	6.79e-6	1→13
2	Rough milling PL100	0.166	2.00	1.50	1.97e-9	6.79e-6	2→14
3	Rough milling PL101	0.133	2.00	1.66	1.97e-9	6.35e-7	3→15
4	Boring CY110	0.154	1.60	1.33	1.58e-6	6.60e-5	4→10
5	Rough drilling CY108 & CY109	0.090	2.00	1.66	1.97e-9	6.35e-7	5→10
6	Chamfering CY108 & CY109	0.250	2.00	1.66	1.97e-9	6.35e-7	6→6
7	Chamfering CY100 & CY101	0.257	1.50	1.20	6.79e-6	3.18e-4	7→15
8	Boring CY100	0.257	1.50	1.20	6.79e-6	3.18e-4	8→15
9	Boring CY101	0.122	1.66	1.30	6.35e-7	9.61e-5	9→12
10	Rough drilling CY102 & CY103	0.109	1.66	1.40	6.35e-7	2.66e-5	10→12
11	Rough drilling CY111	0.134	1.66	1.40	6.35e-7	2.66e-5	11→15
12	Boring CY108 & CY109	0.122	1.30	1.10	9.61e-5	9.66e-4	12→15
13	Boring CY102 & CY103	0.122	1.30	1.00	9.61e-5	2.69e-3	13→15
14	Boring CY111	0.117	1.66	1.33	6.35e-7	6.60e-5	14→15
15	Finish milling PL100	0.129	1.66	1.33	6.35e-7	6.60e-5	15→15

## 6.2. Computational results

This section provides the results of the proposed global robust RBOMILP model. After applying the DE algorithm on the data of the hydraulic pump, the Pareto frontier of the RBOMILP model under the MI-and-CI strategy has been provided as Table 3 for both deterministic and uncertain models. In the deterministic model, all the parameters are deterministic and no uncertainty is imposed to the model. In the uncertain model, the parameters are manipulated in their corresponding alteration range as Table 1. In Table 3, the first column shows the number of Pareto solutions. The second and the third columns represent the values of the first and the second objective functions for the deterministic model. Similarly, the fourth and the fifth columns show the values of the first and the second objective functions for the uncertain model. Accordingly, twenty one and six Pareto solutions were obtained for deterministic and uncertain models, respectively.

Table 3. Pareto solutions of the RBOMILP model under MI-and-CI strategy

Pareto solution #	Deterministic parameters		Uncertain parameters	
	$OFV_1$	$OFV_2$	$OFV_1$	$OFV_2$
1	6077043	20900	6288260	44440
2	6076760	30800	5342750	322410
3	6076160	32340	5219250	1649230
4	6075560	55220	5130050	2328370
5	5970993	142670	5029200	5473050
6	5240900	165440	5014600	6467010
7	5240300	166980	-	-
8	5185450	170060	-	-
9	5164850	171600	-	-
10	5154250	179300	-	-
11	5143650	190740	-	-
12	5143050	213620	-	-



13	5138450	302500	-	-
14	5097000	412830	-	-
15	5066400	546150	-	-
16	5055800	877470	-	-
17	5054200	1357290	-	-
18	5039600	2351250	-	-
19	4964950	3630610	-	-
20	4929750	5561930	-	-
21	4910150	6555890	-	-

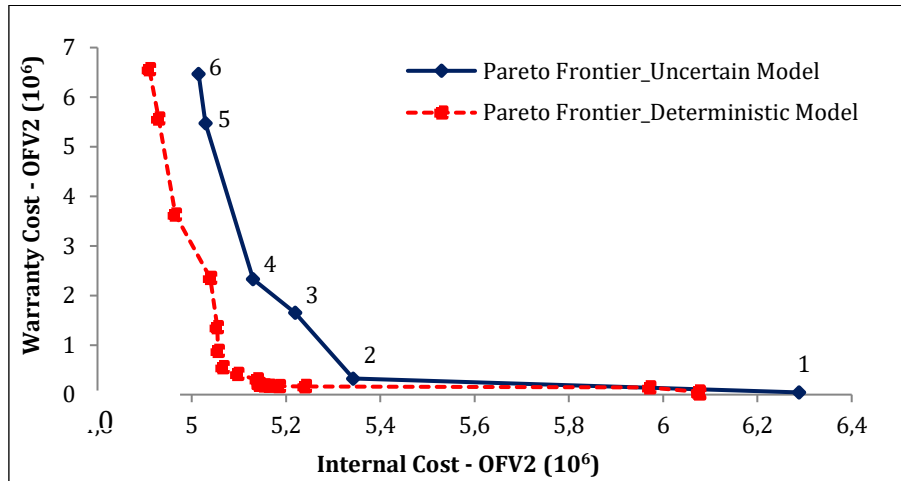


Figure 8. Pareto frontiers for deterministic and uncertain models

The results of Table 3 have been illustrated in Figure 8, wherein dash and solid lines represent the Pareto frontier of the deterministic and the uncertain models, respectively. The inspection plans for different six Pareto solutions of the uncertain model have been depicted in Figure 9. As it can be seen, the solutions with the lower value of the first objective function, e.g., solutions number 5 and 6, represent the inspection plans with less number of MI and CI inspections. The reason is that the total internal cost (i.e.,  $OFV_1$ ) is decreased by reducing the total cost of inspections (i.e.,  $TCI$ ), while the lower the inspection cost, the lower the number of inspection stations during the production process. On the other hand, solutions with the lower values of the warranty cost (i.e.,  $OFV_2$ ) represent those inspection plans wherein the minimum nonconforming parts reach the customers. Accordingly, more numbers of inspections are performed in the inspection plans with lower values of  $OFV_2$ . These different plans show the conflict of the total internal cost and the warranty costs and highlight the applicability and validity of the proposed RBOMILP.

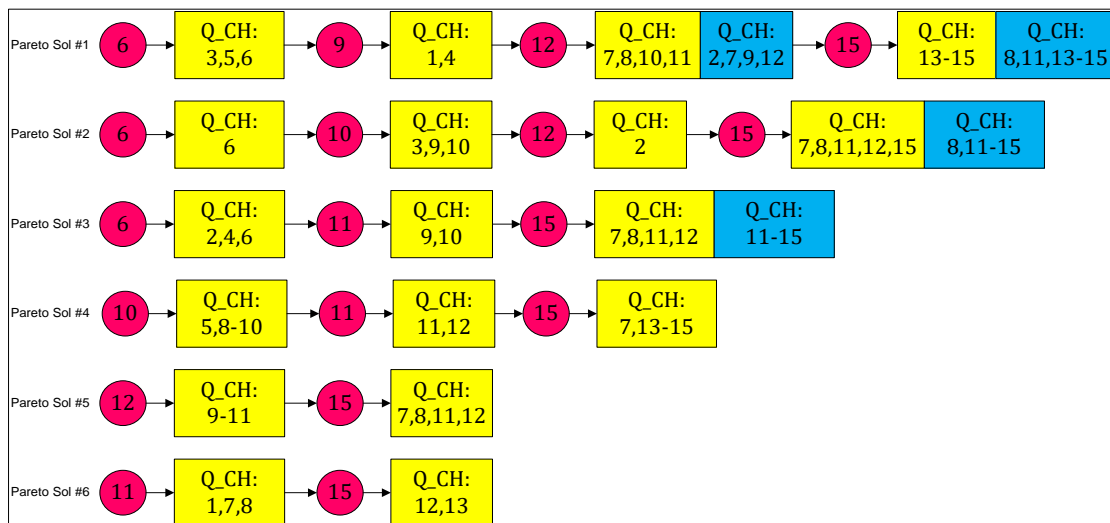


Figure 9. Inspection plans of the Pareto solutions for the robust BMILP\_EP

Since in the real industrial case, the cost of CI is the same for all the quality characteristics, a quality characteristic undergoes the CI if that characteristic corresponds to an operation with low value of process capability  $CP$ . Accordingly, the operations with the lowest  $CP$  undergo CI one by one once the trade-off between two objective functions is met and the global minimum solution is found. The order of the process capability for different operations is  $CP_{12} = CP_{13} < CP_7 = CP_8 < CP_4 = CP_9 = CP_{10} = CP_{11} = CP_{14} = CP_{15} < CP_1 = CP_2 = CP_3 = CP_5 = CP_6$ . Accordingly, the quality characteristics created by operations number 7, 8, 12 and 13 are more likely to undergo CI in every inspection plan.

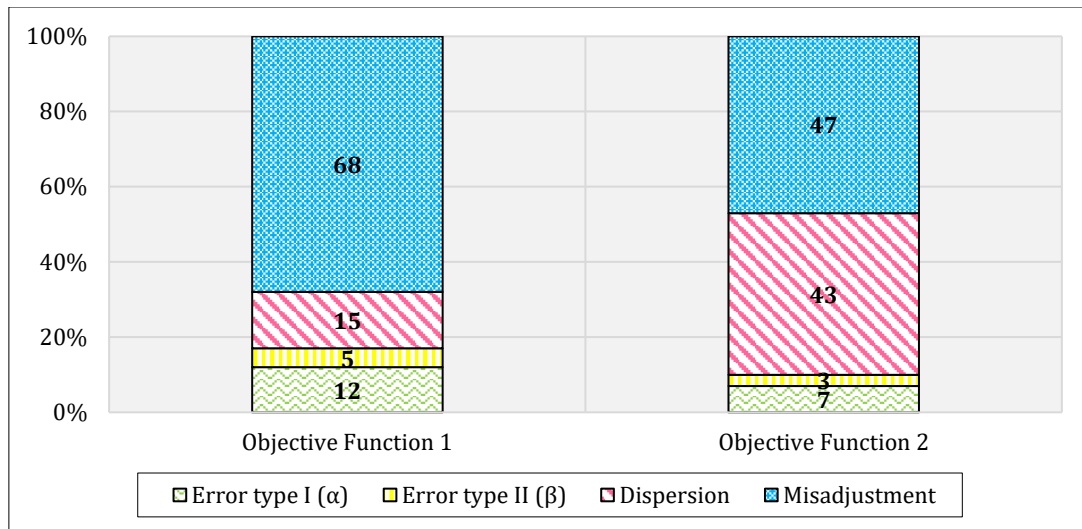


Figure 10. Effect of uncertain parameters on the objective functions

Through an experiment, the contribution of the uncertain parameter in the increase of the objective functions was investigated to extract the parameters that impose high sensitivity to the objective functions. The result of this experiment has been depicted as Figure 9. As it can be seen, misadjustment and dispersion have the highest contribution on the objective functions' sensitivity. In addition, misadjustment has higher effect on  $OFV_1$  rather than  $OFV_2$  and vice versa for dispersion. Therefore, the company of producing the hydraulic pump should have better control on the misadjustment if lower level of the internal cost is desired. It has been recommended to this company to limit the alteration and the uncertainty of the misadjustment as much as possible. On the other hand, if increasing the customer satisfaction (i.e., minimum warranty cost) is desired, limiting the variation of the both misadjustment and dispersion is recommended. Adragna et al. (2010) and Thornton (2004) have also proved the significant impact of misadjustment and dispersion in calculating inertial tolerancing and process capability index.

### 6.3. Sensitivity analysis

Hereafter, the effect of different uncertainty of parameters in *which-what* and *when* decisions are separately investigated. In addition, since the failure rate is affected by both misadjustment and dispersion, the effect of uncertainty in both of these parameters is also examined on the inspection decisions. Finally, a global robust inspection plan is obtained by considering all the parameters under uncertainty. The results are tabulated in Table 4, in which the first to third columns show different sources of uncertainty, the inspection strategy, and the total cost of manufacturing ( $OFV_1 + OFV_2$ ), respectively. The fourth to tenth columns explain the contribution percent of each component to the total cost of manufacturing. Finally, the last two columns present those quality characteristics that need monitoring and conformity inspection, respectively. It should be noted that the value inserted in the parenthesis corresponds the location where inspection should be performed. For example, for the case of uncertainty in misadjustment under MI-or-CI, quality characteristics 1 to 6 need MI after operation 6, quality characteristics 9 to 11 need MI after operation 11, and quality characteristics 7, 8, and 12 to 15 need CI after operation 15. The first row of each inspection strategy corresponds to the deterministic model, wherein the parameters are deterministic and no alteration is allowed.

Table 4. Detail of cost objective function for different sources of uncertainty

Source of	Detail Costs (%)	Decisions	
		MI	CI
	$OFV_1$ (% of Total)	$OFV_2$ (%)	

Uncertainty										
		TCP	TCS	TCIF for CI	TCIF for MI	TCIV for CI	TCIV for MI	TCW		
Deterministic	5160250	93.26	0.00	0.00	0.17	0.00	6.10	0.47	1,2,4-6(6)	-
Type I error	5160250	93.26	0.00	0.00	0.17	0.00	6.10	0.47	3,7-10,12(12)	-
Type II error	5160250	93.26	0.00	0.00	0.17	0.00	6.10	0.47	11,13-15(15)	-
Time	5369950	89.62	0.00	0.00	0.17	0.00	9.76	0.45	1,2,4-6(6)	-
Misadjustment	6080603	79.13	0.04	0.06	0.09	17.20	3.45	0.03	2,4,5,7-10(10)	7,8,12-15(15)
Dispersion	5160250	93.26	0.00	0.00	0.17	0.00	6.10	0.47	9-11(11)	-
Misadjustment & dispersion	6396190	75.23	0.04	0.04	0.10	16.35	8.19	0.05	1,2,4-6(6)	-
All parameters	6500003	74.03	0.04	0.06	0.08	16.09	9.68	0.03	3,7-10,12(12)	-
Deterministic	5068120	94.96	0.00	0.00	0.14	0.00	4.14	0.76	11,13-15(15)	-
Type I error	5079900	94.74	0.00	0.00	0.12	0.00	4.13	1.02	1,3,4,7-10(10)	-
Type II error	5069060	94.94	0.00	0.00	0.13	0.00	4.14	0.79	11-15(15)	-
Time	5173170	93.03	0.00	0.00	0.09	0.00	6.08	0.80	1,3,4,7-10(10)	-
Misadjustment	6000253	80.19	0.04	0.07	0.03	17.43	1.75	0.49	11-15(15)	-
Dispersion	5079900	94.74	0.00	0.00	0.12	0.00	4.13	1.02	4(6)	-
Misadjustment & dispersion	6253453	76.95	0.04	0.05	0.06	16.72	5.03	1.15	7-9(12)	-
All parameters	6409190	75.08	0.04	0.05	0.06	16.32	8.18	0.29	12-15(15)	-
									4,9,10(10)	7,8,11-15(15)
									1,3,4,7-10(10)	-
									11-15(15)	-
									3,4,6(6); 9(9)	7,8,12-15(15)
									10,11(11)	-
									2(2); 4,9(9)	8,12-15(15)
									10,11(12);	-
									7(15)	-

According to Table 4, uncertainty in errors type I and II as well as dispersion has no effect on the final inspection decisions while their results are similar to the result of the deterministic model. This issue points out that at the current level of fluctuation intervals of errors type I and II and dispersion, the final decisions are not affected by the imposed uncertainty. In other words, the company does not need to decrease the variation of these parameters more than their current value, while adopting new strategies to limit the variations of errors type I and II and dispersion need a high investment.

Figures 11 and 12 illustrate the warranty ( $OFV_2$ ) and internal costs ( $OFV_1$ ) per part for different sources of uncertainty and the both inspection strategies. It is noteworthy that lower values of the internal and warranty costs, respectively, correspond to higher efficiency and higher responsiveness of the production system. Higher efficiency is desired by the manufacturers and higher responsiveness is desired by the customers. By the other words, although manufacturers are interested in more efficient production systems, customers are likely to interact with more responsive production systems. It can be seen from Figures 11 and 12 that the MI-or-CI strategy is more responsive; however, the MI-and-CI strategy is more efficient. In the MI-or-CI strategy, the worst cases in terms of responsiveness and efficiency belong to the situations with no uncertainty and uncertainty in all the parameters, respectively. On the other hand, in the MI-and-CI strategy, the worst cases in terms of responsiveness and efficiency belong to the situations with uncertainty in both misadjustment and dispersion and uncertainty in all the parameters, respectively. Hence, parameter variations and particularly misadjustment has significant effect on the inspection decisions and needs to be precisely determined and their alteration be decreased as much as possible.

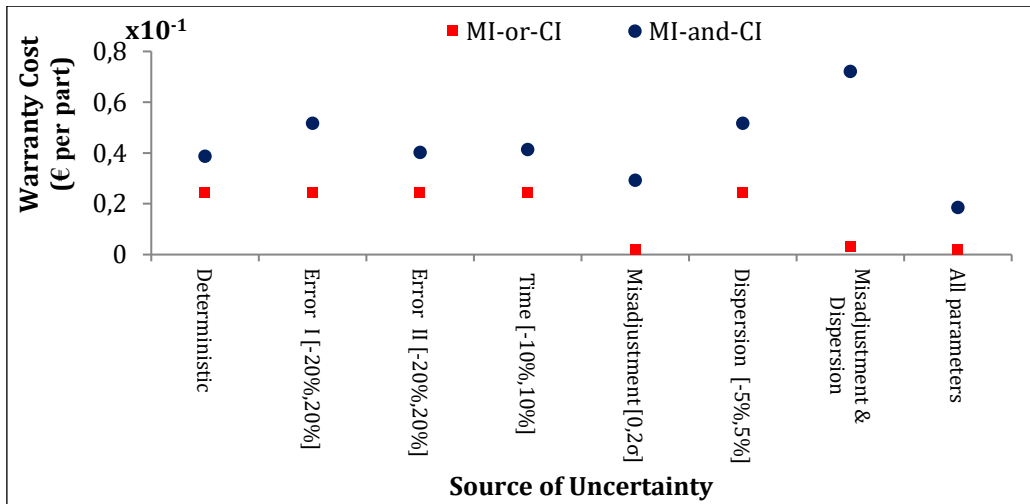


Figure 11. Warranty cost vs. different source of uncertainty

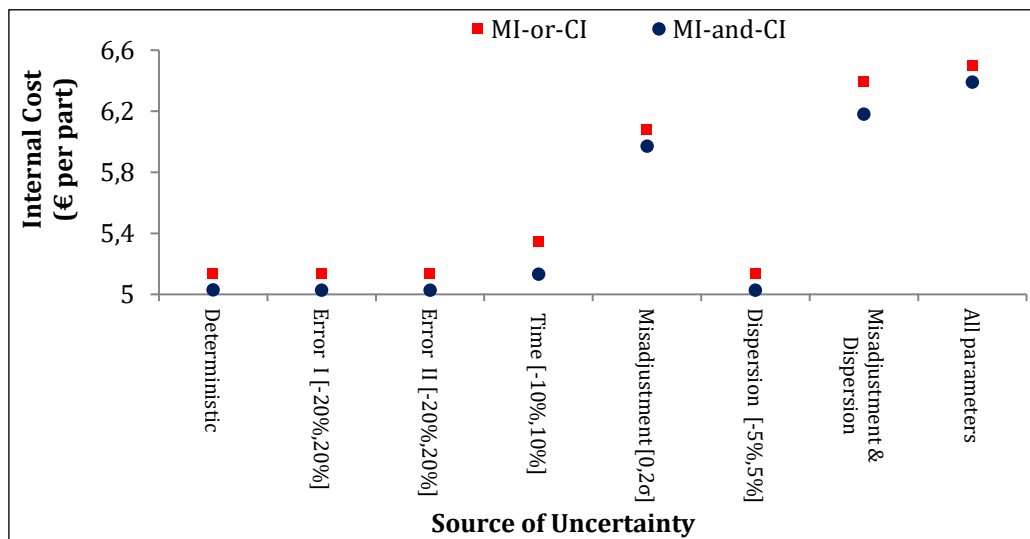


Figure 12. Internal cost vs. different source of uncertainty

In another analysis, the impact of each source of uncertainty (in %) has been illustrated in Figure 13, for both strategies. The maximum increase percentage belongs to a situation, in which all parameters are uncertain with increase up to 24% for both strategies. In addition, errors type I and II and dispersion, separately, have no impact on the total cost in their current values of uncertainty factor in MI-or-CI strategy. It can be also seen that impact of uncertain factors on the total cost for the MI-and-CI strategy is more than the MI-or-CI strategy in almost all cases. Besides, Figure 14 illustrates the same results as Figure 13 but shows the monetary values of uncertainty. For instance, when all parameters are uncertain and we try to design a robust inspection plan, we need to spend extra 1.340€ and 1.341€ costs for the final price of each product at MI-or-CI and MI-and-CI strategies, respectively.

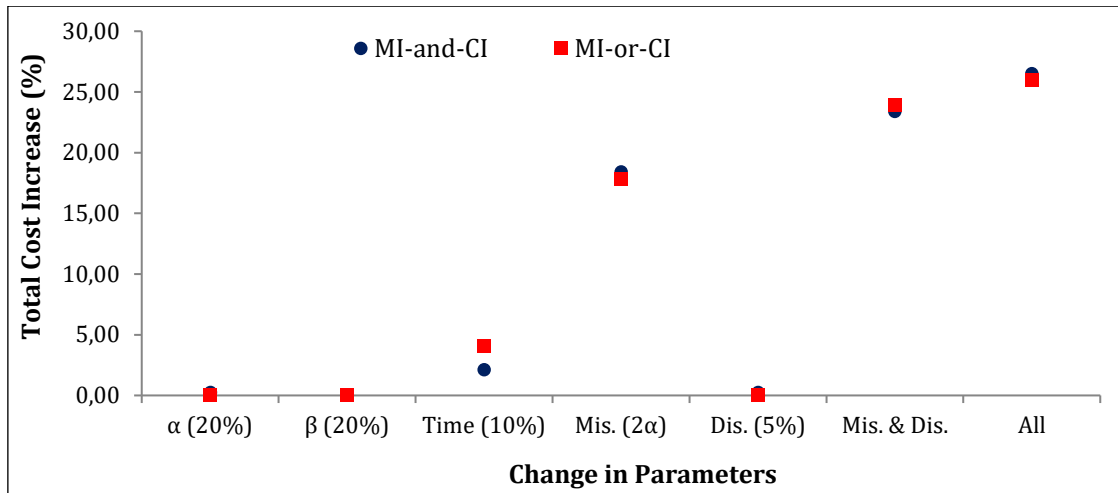


Figure 13. Total cost increase vs. different source of uncertainty

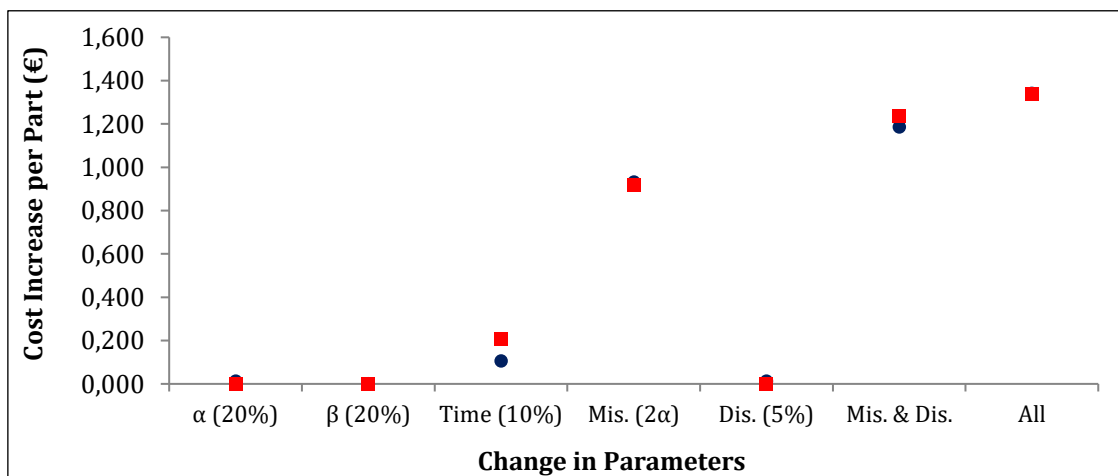


Figure 14. Price increase per part vs. different source of uncertainty

Additionally, the sensitivity of robustness cost versus alteration in the uncertain parameters is investigated for the MI-or-CI strategy as shown in Figure 15 to 18. It should be noted that in Figures 15 to 18, the lower bound of the uncertainty intervals for all parameters are considered equal to their current real value and only the upper bound is changed.

Figure 15 illustrates the effect of alteration of errors type I and II in the cost of robustness. The vertical axis shows the price of robustness per part. The vertical axis determines the increase in the errors type I and II. For instance, the value 7 in the vertical axis means that the errors become 7 times greater than their mean values. As it can be seen, type I error has no effect on the robustness cost once  $\rho_{e-I} \geq 5$ , e.g., for  $\rho_{e-I} = 9$ , the robustness cost is equal to 0.25€ per part. Despite of error type I, error type II has no effect even for  $\rho_{e-II} \cong 15$ . Therefore, it can be concluded that the manufacturer should pay more attention to error type I rather than error type II. Since  $\rho_{e-I}$  is equal to 0.2 in the industrial case, the  $\rho_{e-I}$  is allowed to be altered and increased even to 5 with no increase in the total cost. On the other words, by increasing error type I, the inspection plan remains robust. On the other hand, the inspection plan remains robust when error type II becomes even 15 times greater.

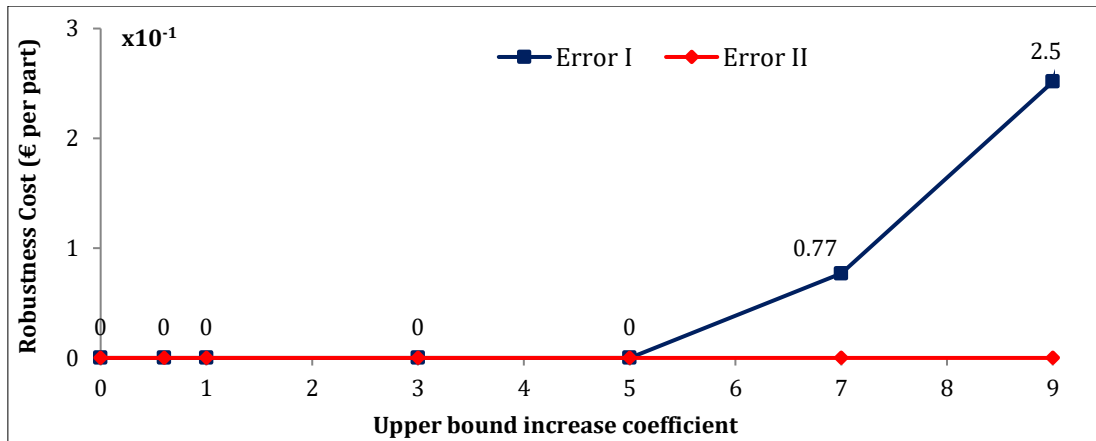


Figure 15. Cost of robustness vs. increase in  $\rho_{e-I}$  and  $\rho_{e-II}$

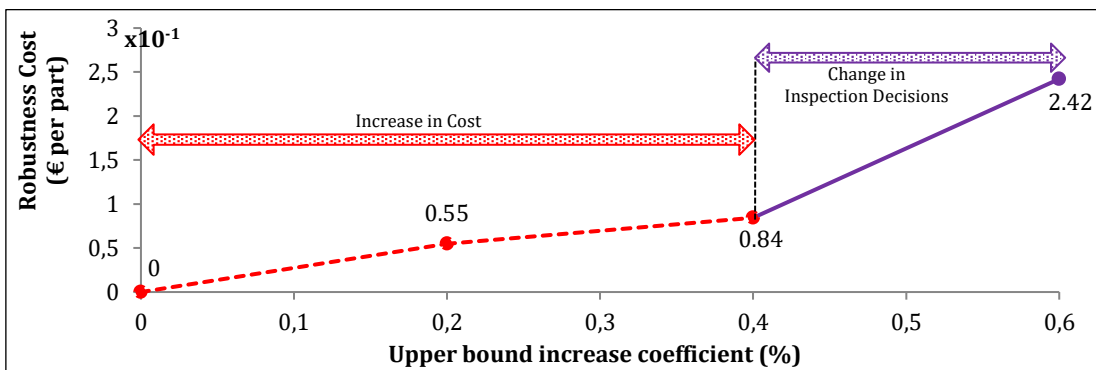


Figure 16. Cost of robustness vs. increase in the production time

Figure 16 depicts the alteration in robustness cost versus increase in the production time's uncertainty factor. The vertical axis shows the increase percent in the production time. It is noteworthy that by increasing the uncertainty factor of the production time ( $\rho_{TP}$ ) from 0 to 0.4, the *which-what* decision does not change and all quality characteristics need MI; while for values bigger than 0.4, the *which-what* decision is changed and some quality characteristics need CI. It can be stated that for values higher than 0.4, the costs of production and inspection are highly increased and the model decides to remove more nonconforming parts from the process to avoid unnecessary operations on these parts. Consequently, the costs of production and inspection are decreased and the way to remove the nonconforming parts is to perform CI during the process. Therefore, for the values of  $\rho_{TP}$  higher than 0.4, the model decides to perform CI for some of quality characteristics.

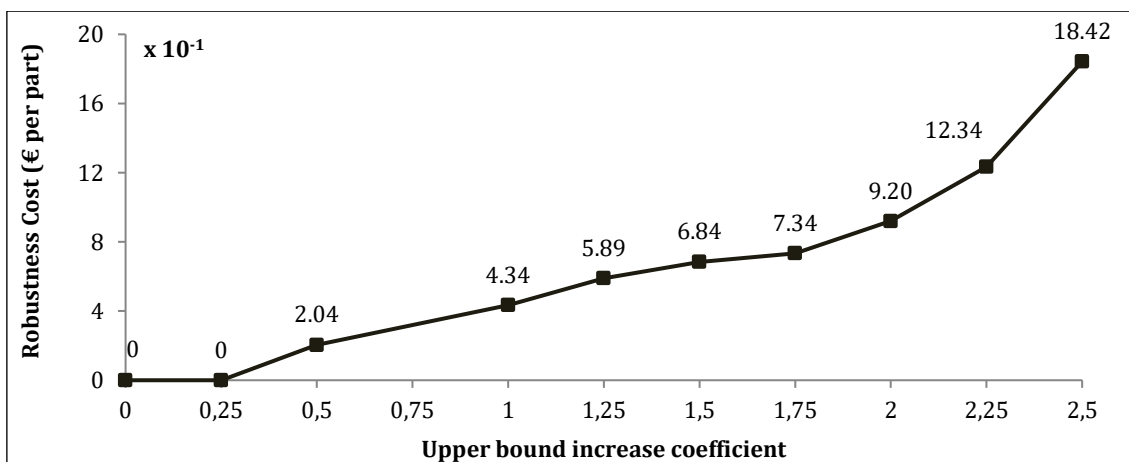


Figure 17. Cost of robustness vs. increase in the misadjustment

Figure 17 shows the effect of alteration in the misadjustment on the robustness cost, so that by increasing the misadjustment, the cost of creating a robust plan is extremely increased. It is noteworthy

that the value of misadjustment can be increased up to  $0.25\sigma$  with no increase in the robustness cost. Finally, Figure 18 illustrates the impact of increase in dispersion on the cost of robustness. As it is obvious, for the values of  $\rho_\sigma$  lower than 0.1, the robust plan is not changed. Since decreasing dispersion in the manufacturing processes is too expensive, hence, in the real industrial case, the company can let dispersion to alter up to 0.1.

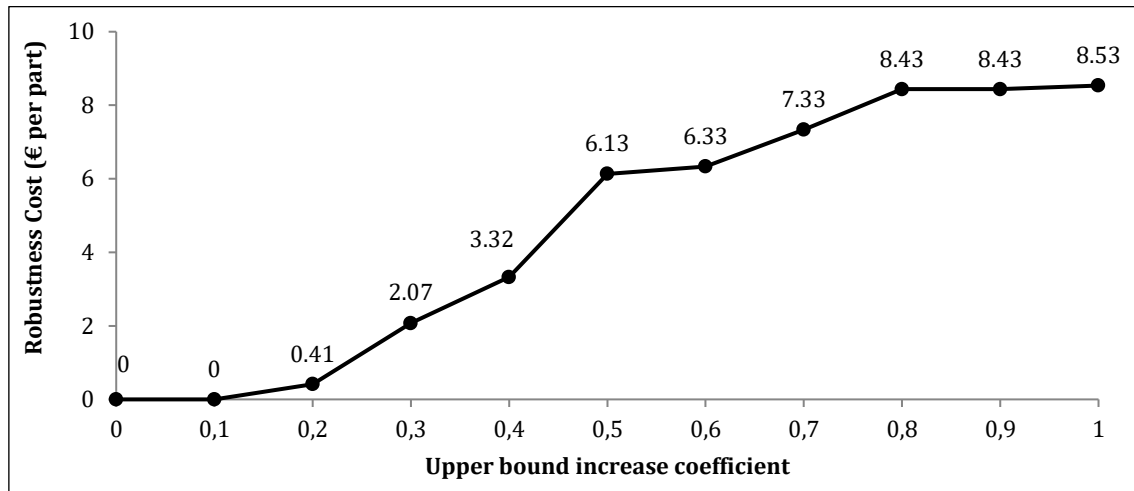


Figure 18. Cost of robustness vs. increase in the dispersion

## 7. Conclusion

This paper integrates the inspection plan with a multi-stage production system to simultaneously pick out the critical quality characteristics and to determine the type and the location of the inspections where the planning parameters are uncertain. For this aim, a new robust bi-objective mixed integer linear programming (RBOMILP) model has been developed with a trade-off between the production cost and the customer satisfaction as the two conflicting objective functions. The proposed RBOMILP model decides 1) *which* quality characteristics needed *what* kind of inspection and 2) *when* the inspection of these characteristics should be performed. Through the inspection plan, quality characteristics undergo two kinds of inspection as monitoring and conformity inspections. The uncertain parameters include the production and the inspection time, errors type I and II, misadjustment and dispersion of the operations. To cope with the uncertainty of the parameters, a robust optimization approach based on the Taguchi and Monte Carlo methods were developed. The proposed model and the solution approaches were validated through a real industrial case study from one of the leading automotive industries in France. Finally, the sensitivity of the objective functions to the uncertain parameters was investigated to draw valuable managerial insights. It was resulted the misadjustment had the most effect on the final decisions. On the other hand, since eliminating the source of uncertainty is expensive, a maximum threshold for each parameter was extracted that allows a level of uncertainty in the parameters. It is our hope that this study could inspire additional in-depth research and discussions on this topic.

Considering the total production time of the parts as the third objective function and making trade-off between the production costs, the production time and the customer satisfaction may lead to interesting knowledge about the problem. On the other hand, taking into account the failure rate of the equipment and investigating the effect of breakdown on the production time objective function could be another further research direction. Finally, proposing the inspection plan for a multi-product manufacturing system could be an interesting perspective on this topic.

## Reference

- Abbass, H.A., Sarker, R. and Newton, C., 2001. PDE: a Pareto-frontier differential evolution approach for multi-objective optimization problems. In *Evolutionary Computation, 2001. Proceedings of the 2001 Congress on* (Vol. 2, pp. 971-978). IEEE.
- Adragna, P., Samper, S. et Pillet, M., 2010. A proposition of 3D inertial tolerancing to consider the statistical combination of the location and orientation deviations. *International Journal of Product Development*, 10 (1):26-45.
- Arvidsson, M., Gremyr, I., 2008. Principles of Robust Design Methodology. *Quality and Reliability Engineering International*, 24(1): 23-35.
- Asl-Najafi, J., Zahiri, B., Bozorgi-Amiri, A., & Taheri-Moghaddam, A., 2015. A dynamic closed-loop location-inventory problem under disruption risk. *Computers & Industrial Engineering*, 90, 414-428.

- Azizmohammadi, R., Amiri, M., Tavakkoli-Moghaddam, R. and Mohammadi, M., 2013. Solving a redundancy allocation problem by a hybrid multi-objective imperialist competitive algorithm. *International Journal of Engineering-Transactions C: Aspects*, 26(9), p.1031.
- Bai, D.S., Yun, H.J., 1996. Optimal allocation of inspection effort in a Serial multi-stage production system. *Computer and Industrial Engineering*, 30 (3): 387-396.
- Barad, M., 1990. A break-even quality level approach to location of inspection station in a multi-stage production process. *International Journal of Production Research*, 28(1): 29-45.
- Bassetto, S., Siadat, A., Tollenaere, M., 2011. The management of process control deployment using interactions in risks analyses. *Journal of Loss Prevention in the Process Industries*, 24: 458-465.
- Beiqing, H., Du, X., 2006. A Robust Design Method Using Variable Transformation and Gauss-Hermite Integration. *International Journal for Numerical Methods in Engineering*, 66(12): 1841-1858.
- Beyer H.G., Olhofer, M., Sendhoff, B., 2002. On the behavior of  $(\mu/\mu_i, \lambda)$ -es optimizing functions disturbed by generalized noises. In *Foundations of Genetic Algorithms*.
- Brandenburg, M., 2015. Low carbon supply chain configuration for a new product—a goal programming approach. *International Journal of Production Research*, 53(21), pp.6588-6610.
- Calegari, P., Coray, G., Hertz, A., Kobler, D., Kuonen, P., 1999. A taxonomy of evolutionary algorithms in combinatorial optimization, *Journal of Heuristics* 5, 145-158.
- Chakravarty, A.K., Shtub, A., 1987. Strategic allocation of inspection effort in a serial, multi-product production system, *IIE Transactions*, 19(1): 13-22.
- Chen, W., Allen, J.K., Tsui, K.L., Mistree, F., 1996. A procedure for robust design: Minimizing variations caused by noise factors and control factors. *Journal of Mechanical Design*, 118(4): 478-485.
- Colledani M., Ebrahimi, D., Tolio, T., 2014a. Integrated quality and production logistics modelling for the design of selective and adaptive assembly systems. *CIRP Annals - Manufacturing Technology* 63: 453-456.
- Colledani, M., Tolio, T., 2006. Impact of Quality Control on Production System Performance. *CIRP Annals - Manufacturing Technology* 55 (1): 453-456.
- Colledani, M., Tolio, T., 2012. Integrated quality, production logistics and maintenance analysis of multi-stage asynchronous manufacturing systems with degrading machines. *CIRP Annals - Manufacturing Technology* 61: 455-458.
- Colledani, M., Tolio, T., Fischer, A., Iung, B., Lanza, G., Schmitt, R., Vancza, J., 2014b. Design and management of manufacturing systems for production quality. *CIRP Annals - Manufacturing Technology* 63: 773-796.
- Das, I., 2000. Robustness optimization for constrained nonlinear programming problems. *Engineering Optimization*, 32(5): 585-618.
- Desimoni, E., Brunetti, B., 2011. Uncertainty of measurement and conformity assessment: a review. *Anal Bioanal Chem*, 400: 1729-1741.
- Emmons, H., Rabinowitz, G., 2002. Inspection allocation for multistage deteriorating production systems. *IIE Transactions*, 34: 1031-1041.
- Etienne, A., Mirdamadi, S., Mohammadi, M., Malmiry, R.B., Antoine, J.F., Siadat, A., Dantan, J.Y., Tavakkoli, R. and Martin, P., 2016. Cost engineering for variation management during the product and process development. *International Journal on Interactive Design and Manufacturing (IJIDeM)* : 1-12.
- Fathi, M., Rodríguez, V., Fontes, D.B. and Alvarez, M.J., 2016. A modified particle swarm optimisation algorithm to solve the part feeding problem at assembly lines. *International Journal of Production Research*, 54(3), pp.878-893.
- Ferreira, R.J.P., Almeida, A.T., Cavalcante, C. 2009. A multi-criteria decision model to determine inspection intervals of condition monitoring based on delay time analysis. *Reliability Engineering and System Safety*, 94: 905-912.
- Gyung-Jin, P., Lee, T.H., Lee, K.H., Hwang, K.H., 2006. Robust design: An overview. *AIAA Journal*, 44(1): 181-191.
- Hanne, T., Nickel, S., 2005. A multiobjective evolutionary algorithm for scheduling and inspection planning in software development projects. *European Journal of Operational Research*, 167: 663-678.
- Hans-Georg, B., Sendho, Bernhard, 2007. Robust optimization - A comprehensive survey. *Computer Methods in Applied Mechanics and Engineering*, 196(33-34): 3190-3218.
- Hurst, E., 1973. Imperfect inspection in a in a multi-workstation production process. *Management Science*, 20: 378-384.
- Kallgren, H., Lauwaars, M., Magnusson, B., Pendrill, L., Taylor, Ph., 2003. Role of measurement uncertainty in conformity assessment in legal metrology and trade. *Accreditation and Quality Assurance*, 8: 541-547.
- Kane, V.E., 1986. Process capability indices. *Journal of Quality Technology*, 18 (1): 41-52.
- Kanyamibwa, F., Ord, J.K., 2000. Economic process control under uncertainty. *Production and Operations Management*, 9(2): 184-202.
- Khalaj, M., Makui, A., Tavakkoli-Moghaddam, R., 2012. Risk-based reliability assessment under epistemic uncertainty. *Journal of Loss Prevention in the Process Industries*, 25: 571-581.
- Khan, F.I., Haddara, M., 2003. Risk-based maintenance (RBM): A quantitative approach for maintenance/inspection scheduling and planning. *Journal of Loss Prevention in the Process Industries*, 16: 561-573.
- Kogan, K., Raz, T., 2002. Optimal allocation of inspection effort over a finite planning horizon. *IIE Transactions*, 34: 515-527.
- Lee, H., Kim, S.S., 2001. Integration of process planning and scheduling using simulation-based genetic algorithms. *International Journal of Advanced Manufacturing Technology*, 18: 586-590.
- Lee, J., Unnikrishnan, S., 1998. Planning quality inspection operations in multistage manufacturing systems with inspection errors. *International Journal of Production Research*, 36(1): 141-155.



- Lin, S.W. and Ying, K.C., 2015. A multi-point simulated annealing heuristic for solving multiple objective unrelated parallel machine scheduling problems. *International Journal of Production Research*, 53(4), pp.1065-1076.
- Lindsay, G.F., Bishop, A.B., 1964. Allocation of screening inspection effort – dynamic programming approach. *Management Science*, 10(2): 343–352.
- Macii, D., Carbone, P., Petri, D., 2003. Management of measurement uncertainty for effective statistical process control. *IEEE Transactions on Instrumentation and Measurement*, 52 (5): 1611-1617.
- Mechri, W., Simon, C., Bicking, F., Ben Othman, K., 2013. Fuzzy multiphase Markov chains to handle uncertainties in safety systems performance assessment. *Journal of Loss Prevention in the Process Industries*, 26 (4): 594-604.
- Michael, W.T., 2013. Taguchi and Robust Optimization. 1–10.
- Mohammadi, M., Dantan, J.Y., Siadat, A. and Tavakkoli-Moghaddam, R., 2014a, November. An optimization-based framework for inspection planning. In *MOSIM 2014, 10ème Conférence Francophone de Modélisation, Optimisation et Simulation*.
- Mohammadi, M., Dehbari, S. and Vahdani, B., 2014b. Design of a bi-objective reliable healthcare network with finite capacity queue under service covering uncertainty. *Transportation Research Part E: Logistics and Transportation Review*, 72, pp.15-41.
- Mohammadi, M., Jolai, F. and Rostami, H., 2011. An M/M/c queue model for hub covering location problem. *Mathematical and Computer Modelling*, 54(11), pp.2623-2638.
- Mohammadi, M., Jula, P. and Tavakkoli-Moghaddam, R., 2017. Design of a reliable multi-modal multi-commodity model for hazardous materials transportation under uncertainty. *European Journal of Operational Research*, 257(3), pp.792-809.
- Mohammadi, M., Siadat, A., Dantan, J.Y. and Tavakkoli-Moghaddam, R., 2015. Mathematical modelling of a robust inspection process plan: Taguchi and Monte Carlo methods. *International Journal of Production Research*, 53(7): 2202-2224.
- Mohammadi, M., Tavakkoli-Moghaddam, R. and Rostami, R., 2011. A multi-objective imperialist competitive algorithm for a capacitated hub covering location problem. *International Journal of Industrial Engineering Computations*, 2(3), pp.671-688.
- Mohammadi, M., Tavakkoli-Moghaddam, R., Siadat, A. and Dantan, J.Y., 2016. Design of a reliable logistics network with hub disruption under uncertainty. *Applied Mathematical Modelling*, 40(9), pp.5621-5642.
- Mohammadi, M., Torabi, S.A. and Tavakkoli-Moghaddam, R., 2014c. Sustainable hub location under mixed uncertainty. *Transportation Research Part E: Logistics and Transportation Review*, 62, pp.89-115.
- Mousazadeh, M., Torabi, S. A., & Zahiri, B., 2015. A robust possibilistic programming approach for pharmaceutical supply chain network design. *Computers & Chemical Engineering*, 82, 115-128.
- Niakan, F., Vahdani, B. and Mohammadi, M., 2015. A multi-objective optimization model for hub network design under uncertainty: An inexact rough-interval fuzzy approach. *Engineering Optimization*, 47(12): 1670-1688.
- Pajula, E., Ritala, R., 2006. Measurement uncertainty in integrated control and process design-A case study. *Chemical Engineering and Processing*, 45: 312–322.
- Peters, M.H., Williams, W.W., 1984. Location of quality inspection stations: an experimental assessment of five normative heuristics. *Decision Science*, 15(3): 389–408.
- Rahimi, Y., Tavakkoli-Moghaddam, R., Mohammadi, M. and Sadeghi, M., 2016. Multi-objective hub network design under uncertainty considering congestion: An M/M/c/K queue system. *Applied Mathematical Modelling*, 40(5): 4179-4198.
- Rau, H., Chu, Y.H., 2005. Inspection allocation planning with two types of workstation: WVD and WAD. *International Journal of Advanced Manufacturing Technology*, 25: 947–953.
- Rezaei-Malek, M., Tavakkoli-Moghaddam, R., Zahiri, B., & Bozorgi-Amiri, A., 2016. An interactive approach for designing a robust disaster relief logistics network with perishable commodities. *Computers & Industrial Engineering*, 94, 201-215.
- Rostami, H., Dantan, J.Y., Homri, L., 2015. Review of data mining applications for quality assessment in manufacturing industry: support vector machines. *International Journal of Metrology and Quality Engineering*, 6 (4): 401.
- Shiau, Y.R., 2002. Inspection resource assignment in a multistage manufacturing system with inspection error model. *International Journal of Production Research*, 40(8): 1787–1806.
- Shiau, Y.R., 2003a. Inspection allocation planning for a multiple quality characteristic advanced manufacturing system. *International Journal of Advanced Manufacturing Technology*, 21: 494–500.
- Shiau, Y.R., 2003b. Quick decision-making support for inspection allocation planning with rapidly changing customer requirements. *International Journal of Advanced Manufacturing Technology*, 22(9–10): 633–640.
- Shiau, Y.R., Lin, M.H., Chuang, W.C., 2007. Concurrent process/inspection planning for a customized manufacturing system based on genetic algorithm. *International Journal of Advanced Manufacturing Technology*, 33: 746–755.
- Shukla, N., Tiwari, M.K., Ceglarek, D., 2013. Genetic-algorithms-based algorithm portfolio for inventory routing problem with stochastic demand. *International Journal of Production Research* 51 (1): 118–137.
- Storn, R., Price, K., 1997. Differential evolution – A simple and efficient heuristic for global optimization over continuous spaces. *Journal of Global Optimization* 11, 341–359.
- Taha, H.A., 2006. *Operations research: an introduction*. Englewood Cliffs, NJ: Prentice-Hall.
- Thornton A. C., 2004. *Variation risk management*. Ed. John Wiley. New Jersey: Hoboken
- Torben, H., Arvidsson, M., Gremyr, I., 2009. A review of practices for robust design methodology. *Journal of Engineering Design*, 20(6): 645-657.

- Vahdani, B. and Mohammadi, M., 2015. A bi-objective interval-stochastic robust optimization model for designing closed loop supply chain network with multi-priority queuing system. *International Journal of Production Economics*, 170, pp.67-87.
- Verduzco, A., Rene Villalobos, J., Vega, B., 2001. Information-based inspection allocation for real-time inspection systems. *Journal of Manufacturing Systems*, 20 (1): 13-22.
- Viswanadham, N., Sharma, S.M., Taneja, M., 1996. Inspection allocation in manufacturing systems using stochastic search technique. *IEEE Transactions on Systems, Man, and Cybernetics - Part A: Systems and Humans*, 26 (2): 222-230.
- White, L.S., 1966. The analysis of a simple class of multistage inspection plans. *Management Science*, 12(7): 685-693.
- Xiaoping, D., Chen, W., 2000. Methodology for managing the effect of uncertainty in simulation-based design. *AIAA Journal*, 38(8): 1471-1478.
- Yum, B.J., McDowell, E.D., 1987. Optimal inspection policies in a serial production system including scrap rework and repair: An MILP approach. *International Journal of Production Research*, 25(8): 1451-1464.
- Zahiri, B., and Pishvaei, M. S., 2016. Blood supply chain network design considering blood group compatibility under uncertainty. *International Journal of Production Research*, 1-21.
- Zahiri, B., Tavakkoli-Moghaddam, R., & Pishvaei, M. S., 2014a. A robust possibilistic programming approach to multi-period location-allocation of organ transplant centers under uncertainty. *Computers & Industrial Engineering*, 74, 139-148.
- Zahiri, B., Tavakkoli-Moghaddam, R., Mohammadi, M., Jula, P., 2014b. Multi-objective design of an organ transplant network under uncertainty. *Transportation Research Part E*, 72: 101-124.
- Zahiri, B., Tavakkoli-Moghaddam, R., & Rezaei-Malek, M., 2016. An MCDA-DEA approach for mixed-model assembly line balancing problem under uncertainty. *Journal of Intelligent & Fuzzy Systems*, 30(5), 2737-2748.
- Zahiri, B., Torabi, S. A., Mousazadeh, M., & Mansouri, S. A., 2015. Blood collection management: Methodology and application. *Applied Mathematical Modelling*, 39(23), 7680-7696.
- Zahiri, B., Torabi, S. A., & Tavakkoli-Moghaddam, R., 2017. A novel multi-stage possibilistic stochastic programming approach (with an application in relief distribution planning). *Information Sciences*, 385, 225-249.
- Zeleny, M. (1998). Multiple criteria decision making: Eight concepts of optimality. *Human Systems Management* 17, 97-107.
- Zhalechian, M., Tavakkoli-Moghaddam, R., Zahiri, B. and Mohammadi, M., 2016. Sustainable design of a closed-loop location-routing-inventory supply chain network under mixed uncertainty. *Transportation Research Part E: Logistics and Transportation Review*, 89, pp.182-214.