



### **Science Arts & Métiers (SAM)**

is an open access repository that collects the work of Arts et Métiers Institute of Technology researchers and makes it freely available over the web where possible.

This is an author-deposited version published in: <https://sam.ensam.eu>  
Handle ID: <http://hdl.handle.net/10985/6394>

#### **To cite this version :**

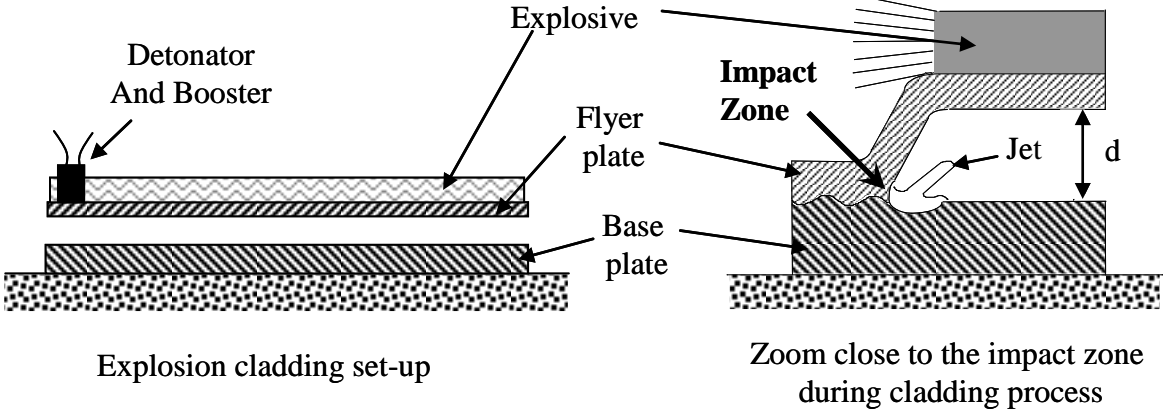
Saïd ETTAQI, Laurent LANGLOIS - Cobalt-based superalloy layers deposited on X38CrMoV5 steel base metal by explosion cladding process - 2008

Any correspondence concerning this service should be sent to the repository

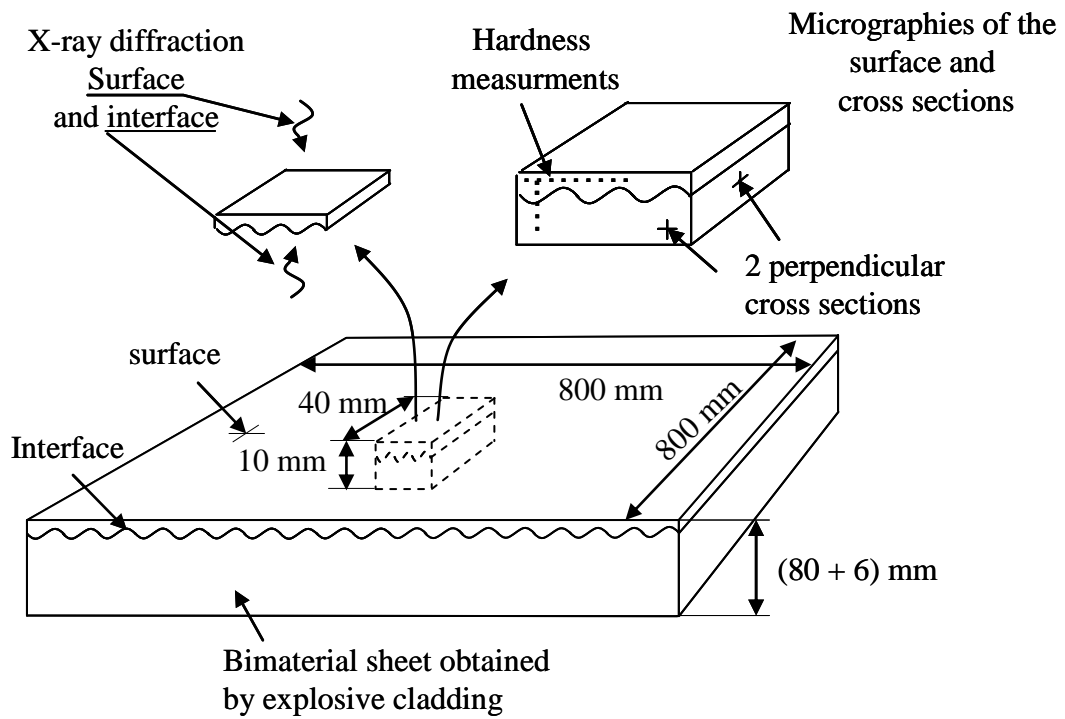
Administrator : [scienceouverte@ensam.eu](mailto:scienceouverte@ensam.eu)



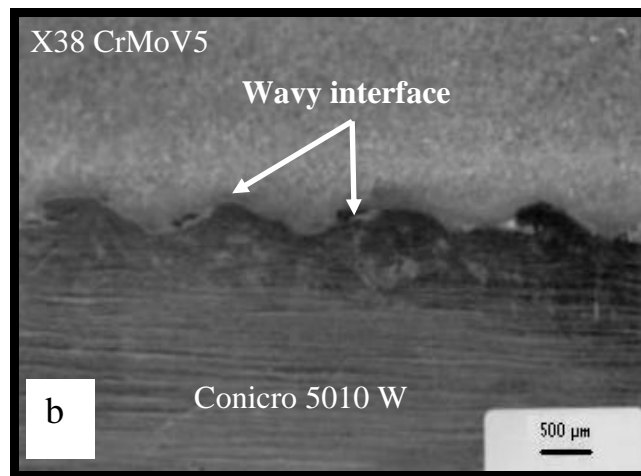
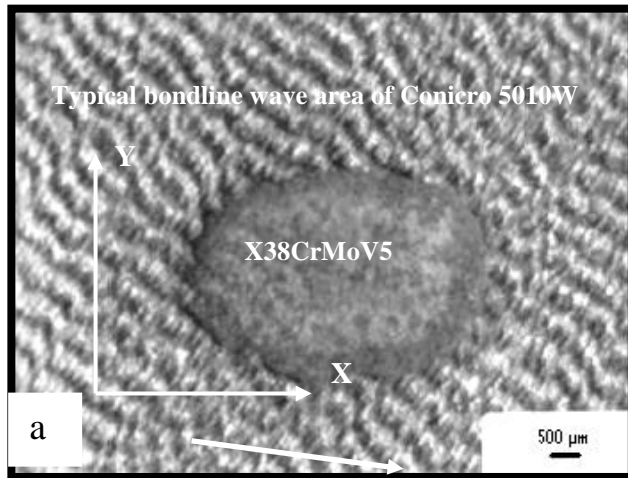
**Illustrations**



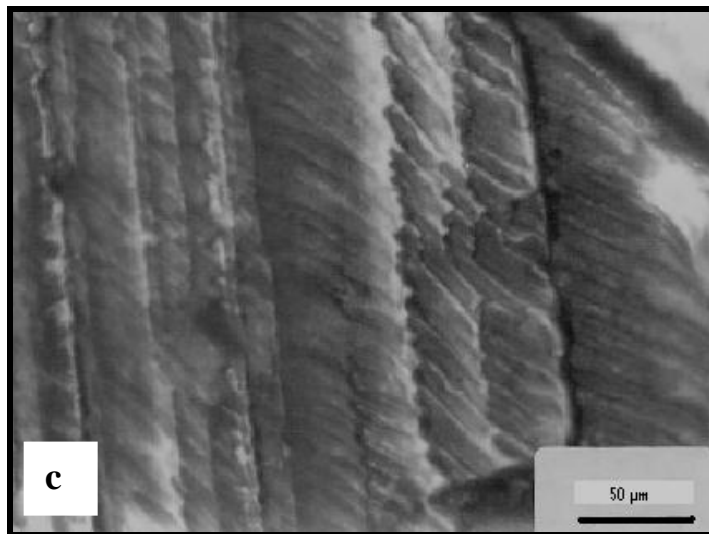
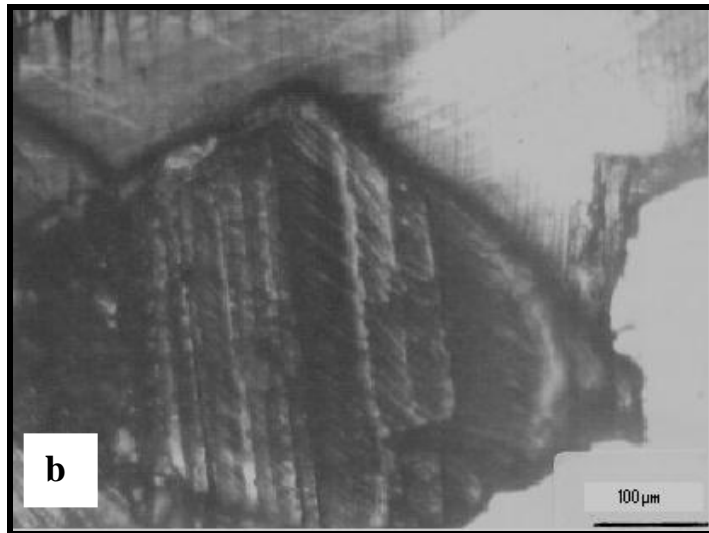
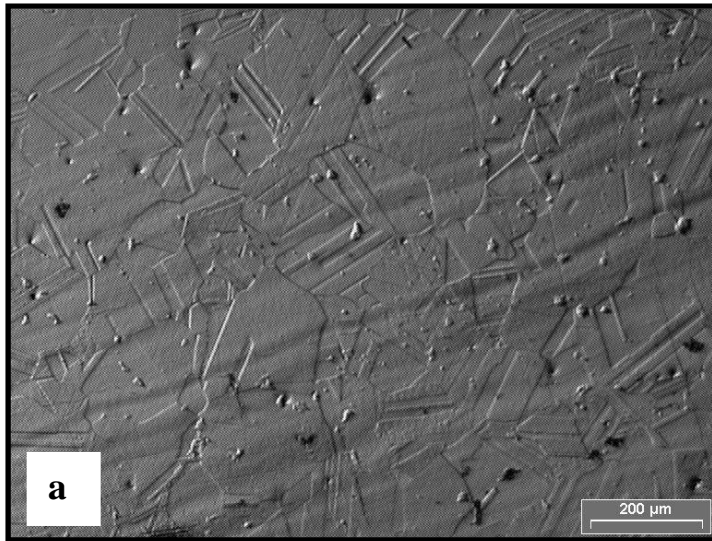
**Figure 1**



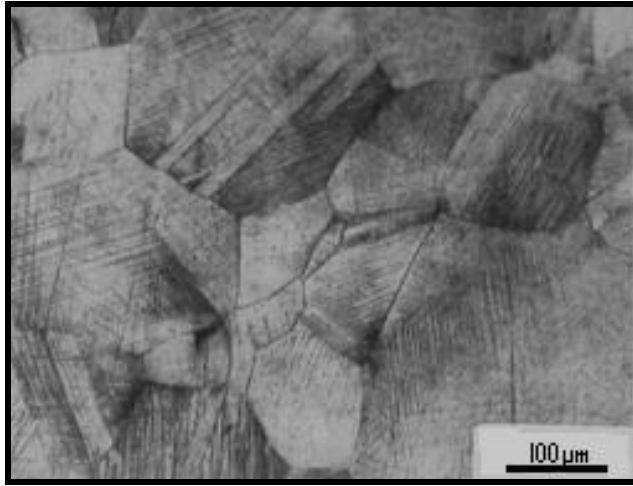
**Figure 2**



**Figure 3**



**Figure 4**



**Figure 5**

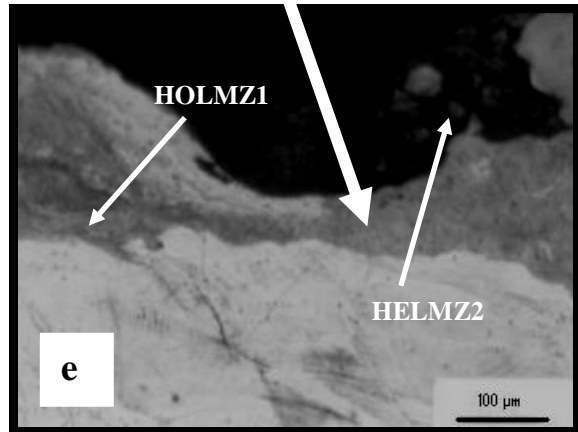
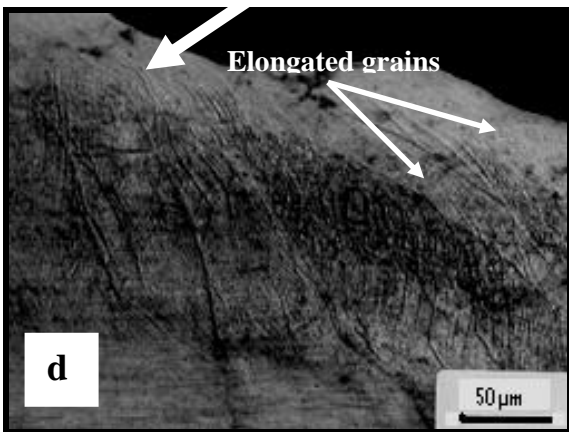
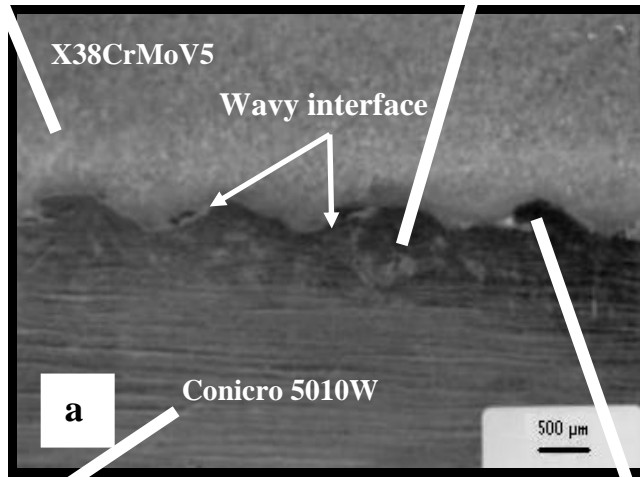
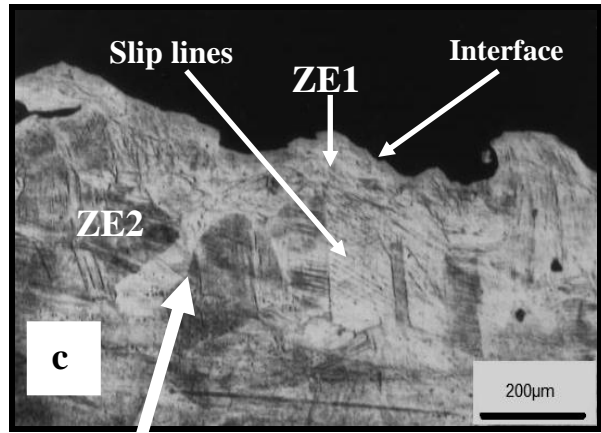
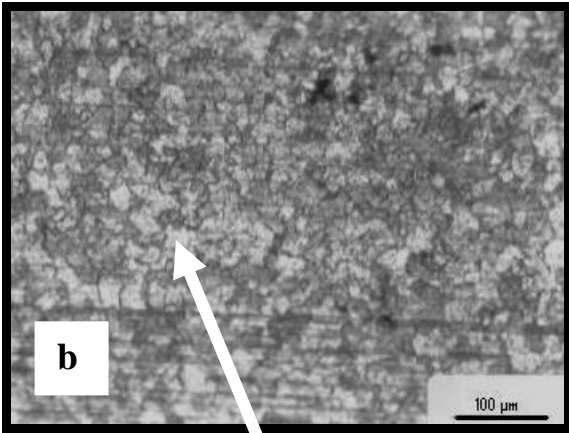


Figure 6

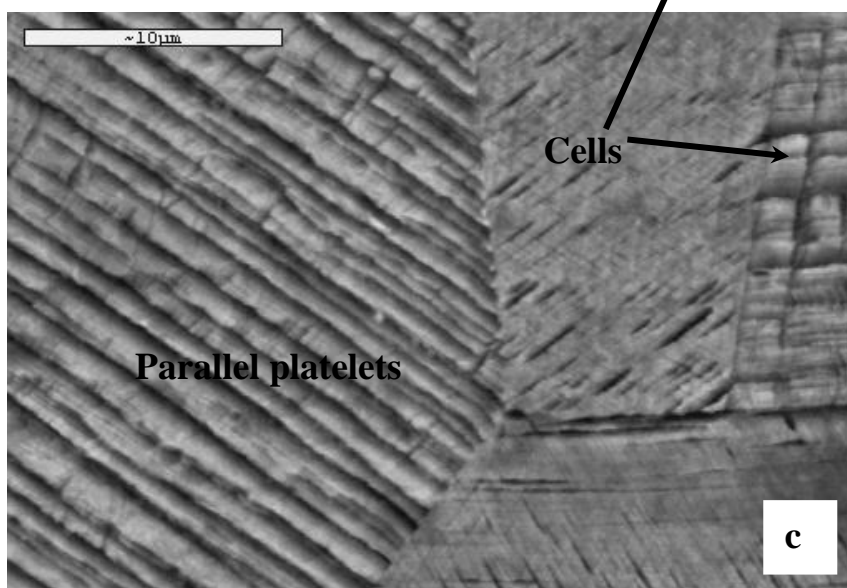
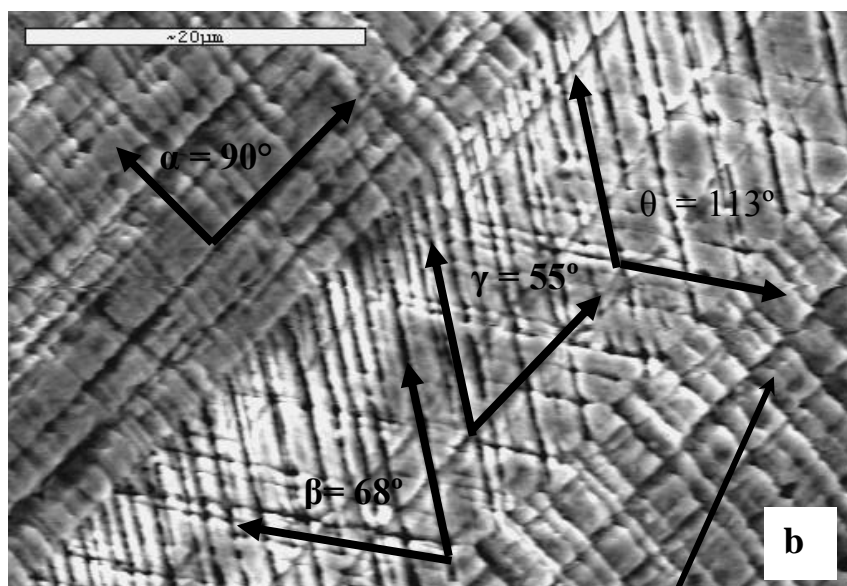
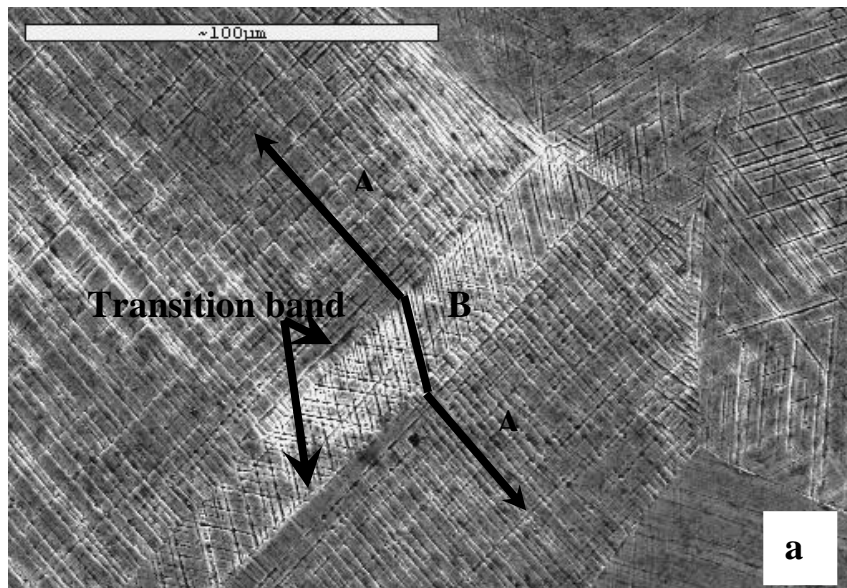


Figure 7



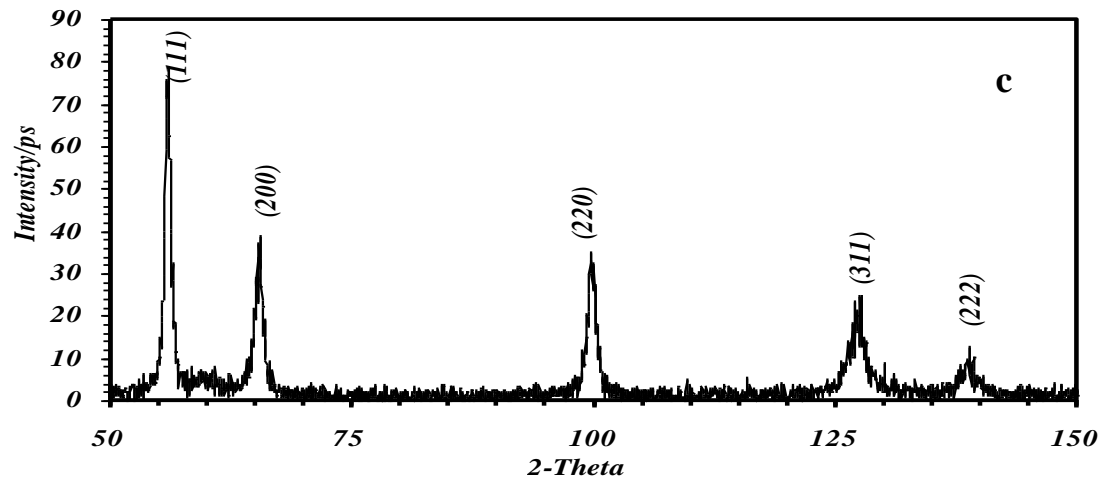
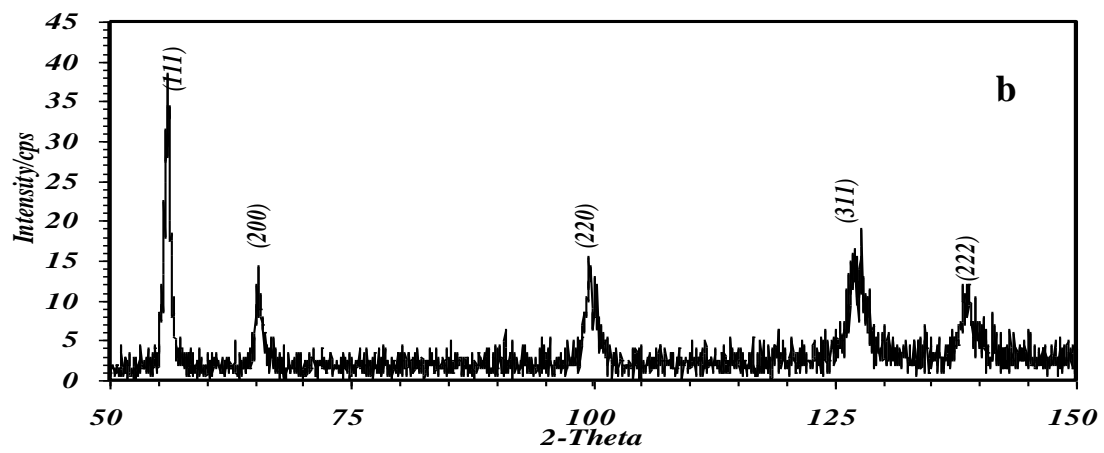
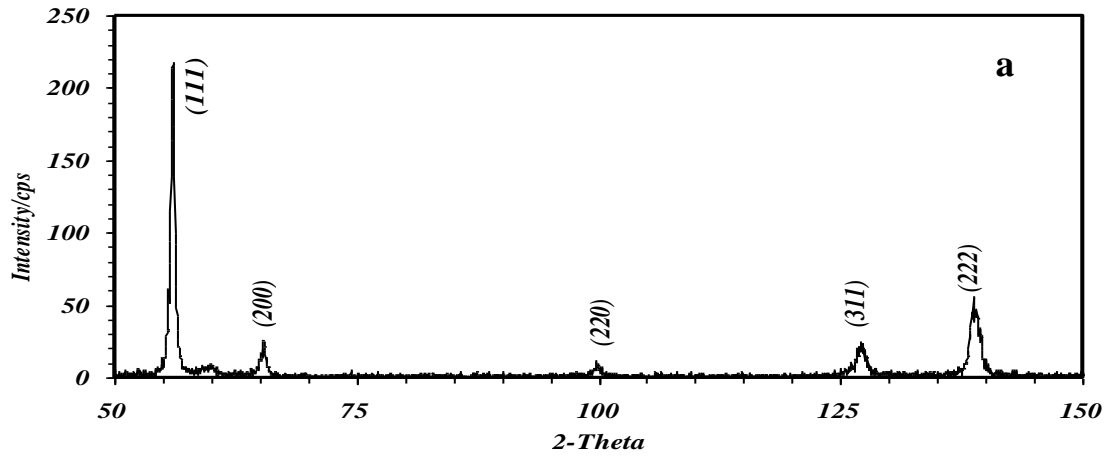
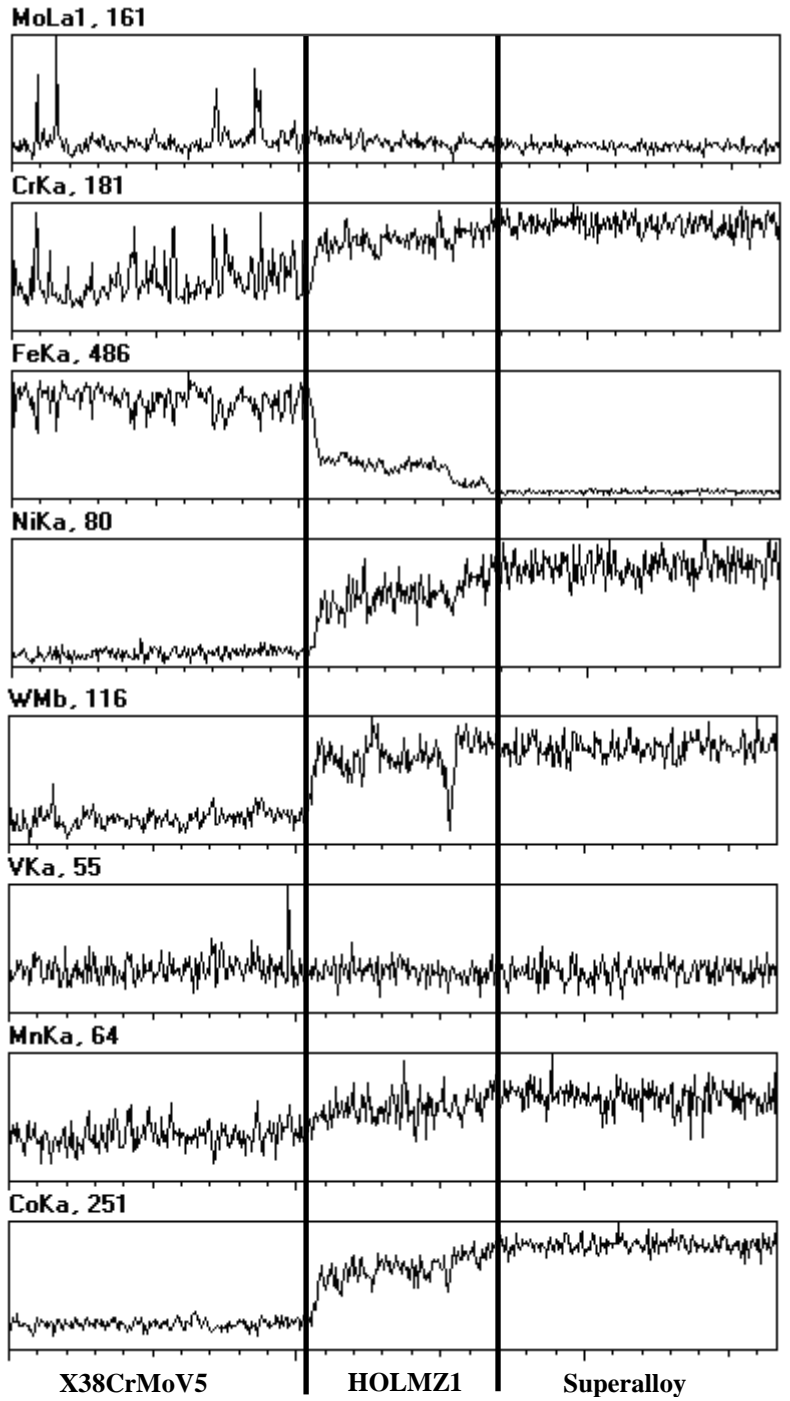
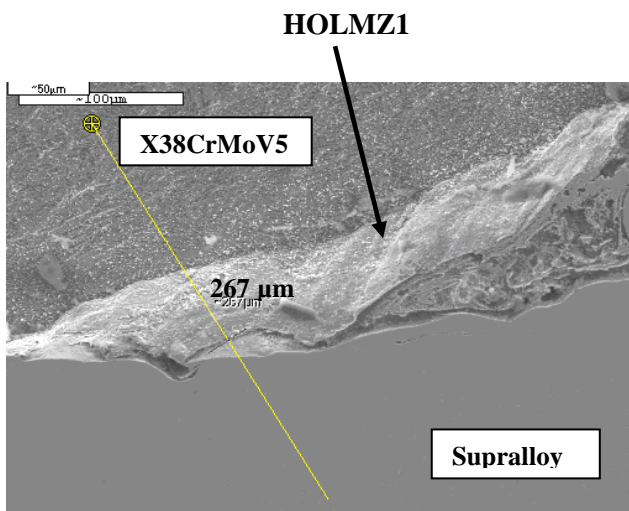


Figure 8



**Figure 9**

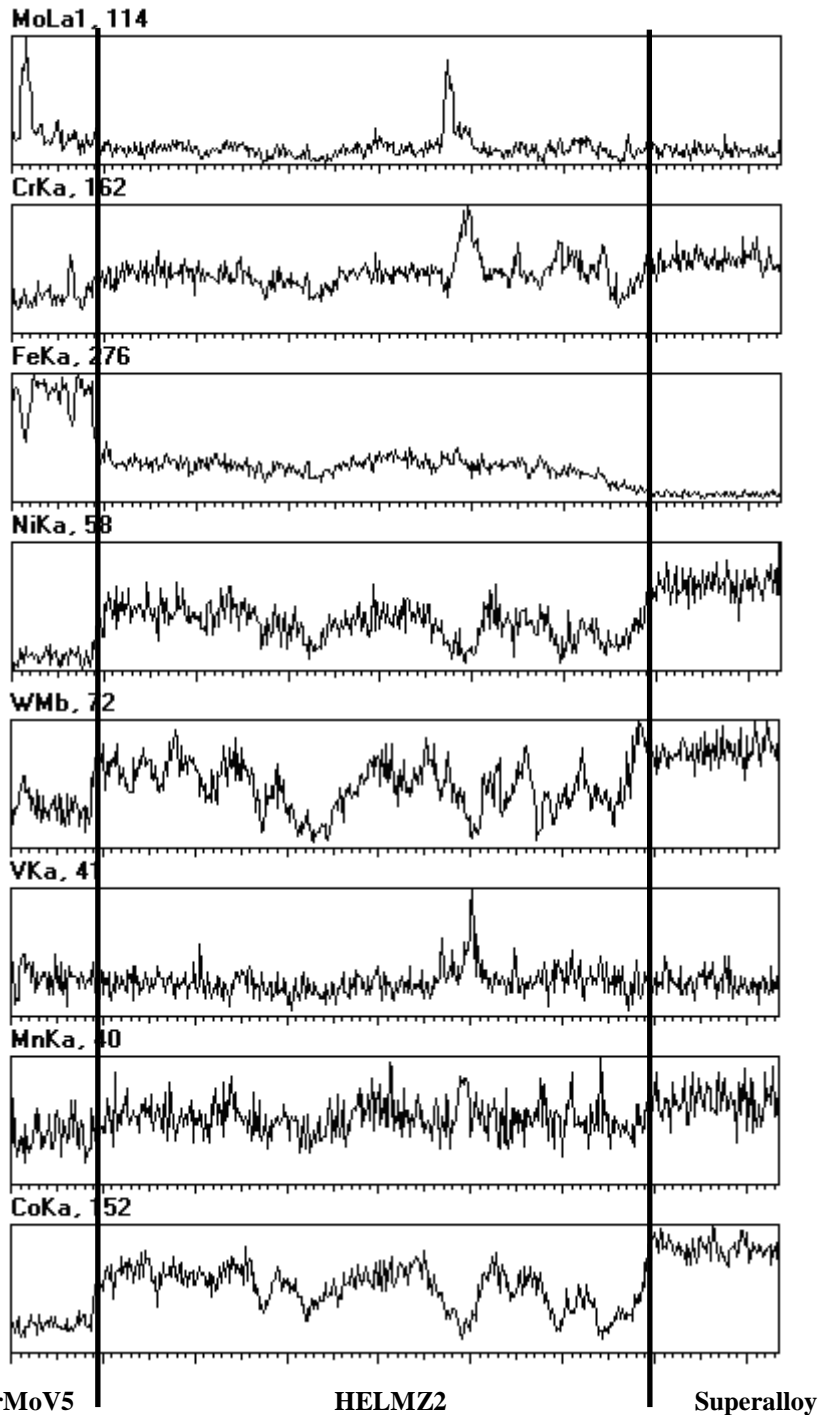
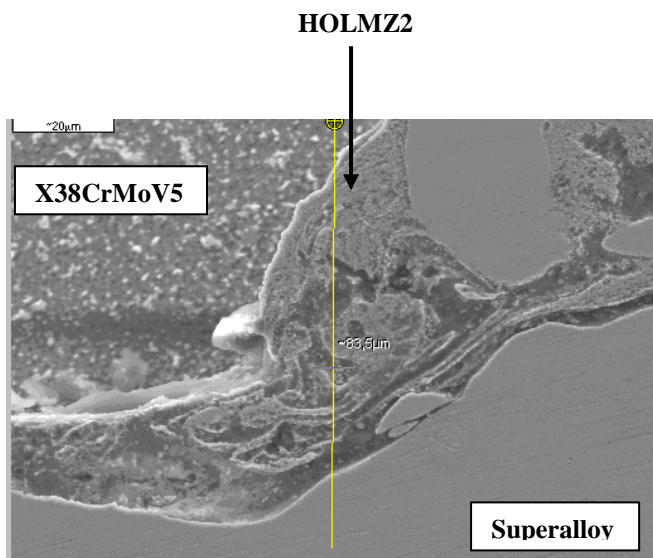


Figure 10

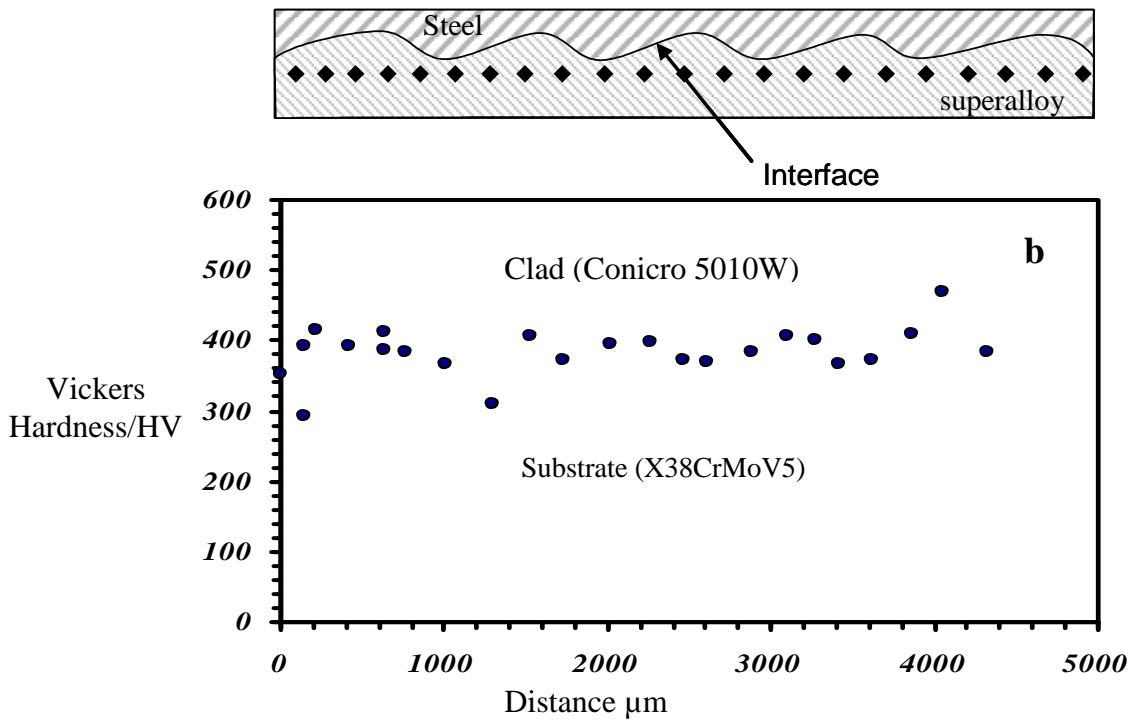
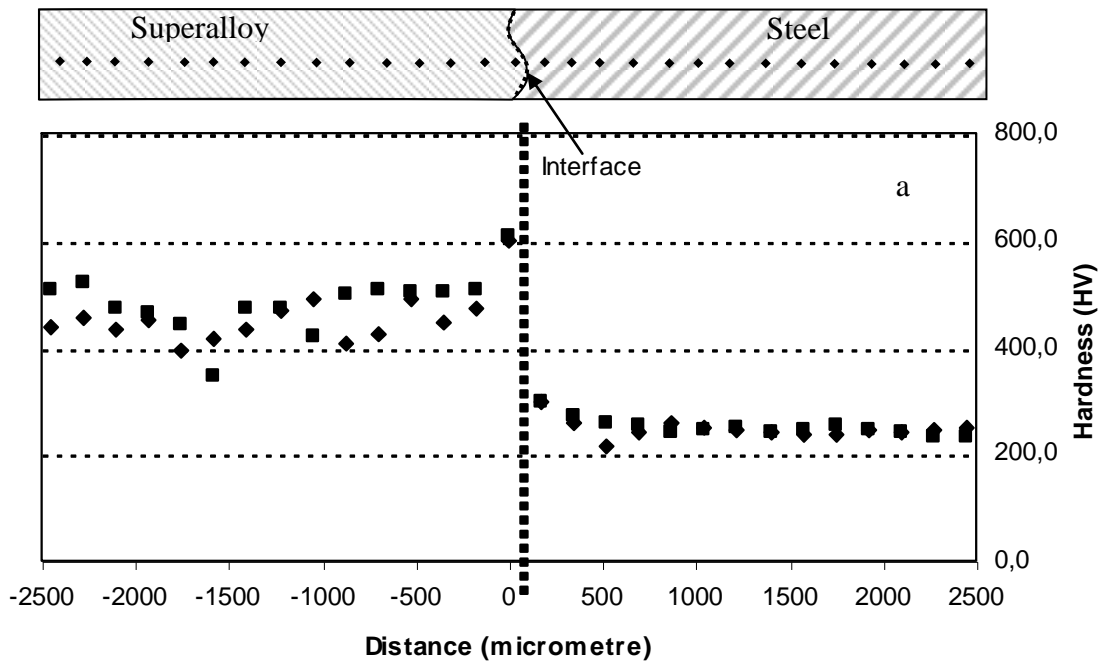
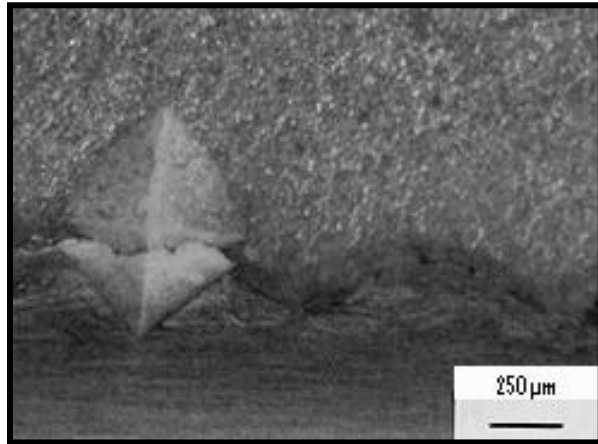


Figure 11



**Figure 12**