



### **Science Arts & Métiers (SAM)**

is an open access repository that collects the work of Arts et Métiers Institute of Technology researchers and makes it freely available over the web where possible.

This is an author-deposited version published in: <https://sam.ensam.eu>  
Handle ID: <http://hdl.handle.net/10985/9699>

#### **To cite this version :**

Patrick DUPONT, Giovanna CAVAZZINI, Giorgio PAVESI, Patrick CHERDIEU, Gérard BOIS, Olivier ROUSSETTE, Antoine DAZIN, Annie-Claude BAYEUL-LAINÉ - Comparisons rans and urans numerical results with experiments in a vaned diffuser of a centrifugal pump - La Houille Blanche - Revue internationale de l'eau n°2, p.108-116 - 2015

Any correspondence concerning this service should be sent to the repository

Administrator : [scienceouverte@ensam.eu](mailto:scienceouverte@ensam.eu)



# COMPARISONS RANS AND URANS NUMERICAL RESULTS WITH EXPERIMENTS IN A VANED DIFFUSER OF A CENTRIFUGAL PUMP

Annie-Claude BAYEUL-LAINÉ<sup>1</sup>, Patrick DUPONT<sup>2</sup>, Giovanna CAVAZZINI<sup>3</sup>, **Giorgio PAVESI<sup>3</sup>**, Antoine DAZIN<sup>1</sup>, Patrick CHERDIEU<sup>2</sup>, Gérard BOIS<sup>1</sup>, Olivier ROUSSETTE<sup>1</sup>

<sup>(1)</sup> Arts et Métiers PARISTECH, LML, UMR CNRS 8107, Bd Paul Langevin, 59655 VILLENEUVE D'ASCQ-annie-claude.bayeul-laine@ensam.eu

<sup>(2)</sup> Ecole Centrale de Lille, LML, UMR CNRS 8107, Bd Paul Langevin, 59655 VILLENEUVE D'ASCQ

<sup>(3)</sup> University of Padova, Energy and Fluids, Department of Industrial Engineering

The paper presents the analysis of the performance and the internal flow behaviour in the vaned diffuser of a radial flow pump using PIV (particles image velocimetry) technique, pressure probe traverses and numerical simulations. PIV measurements have been performed at different hub to shroud planes inside one diffuser channel passage for a given rotational speed and various flow rates. For each operating condition, PIV measurements have been made for different angular positions of the impeller. Probe traverses have also been performed using a 3 holes pressure probe from hub to shroud diffuser width at different radial locations in between the two diffuser geometrical throats. The numerical simulations were realized with the two commercial codes: i-Star CCM+ 8.02.011 (RANS (Reynolds Averaged Navier Stokes) turbulence model, frozen rotor and unsteady calculations), ii-CFX 10.0 (turbulence modelled with DES model (Detached Eddy Simulation) combining RANS with LES (Large Eddy Simulation), unsteady calculations). Comparisons between numerical (fully unsteady calculations) and experimental results are presented and discussed for two flow rates. In this respect, the effects of fluid leakage due to the gap between the rotating and fixed part of the pump model are analysed and discussed.

**KEYWORDS:** Pump, diffuser, PIV measurements, numerical calculations, probes

## *Comparaisons de différents modèles numériques à des résultats expérimentaux dans un diffuseur aubé de pompe centrifuge*

L'analyse des performances et de l'écoulement interne dans un diffuseur aubé de la pompe centrifuge SHF (testée en air) fait l'objet de ce papier. La particularité de cette pompe est qu'il n'y a pas de volute à l'aval de telle sorte que l'écoulement refoule à l'air libre. Une caractéristique de ce diffuseur est que son débit nominal correspond à 80% du débit nominal de la roue. L'analyse des performances est réalisée grâce à la technique PIV (Vélocimétrie par images de particules), aux sondes de pression trois trous et aux simulations numériques. Les mesures PIV ont été réalisées pour différents plans entre le carter et le moyeu dans un canal du diffuseur, pour une vitesse de rotation de roue fixée, et différents débits. Dans chaque cas, les mesures PIV ont été effectuées pour sept différentes positions angulaires de la roue, deux positions seulement sont ici présentées. Des sondes de pression trois trous ont également été utilisées dans le diffuseur à différentes positions radiales et axiales, en entrée et sortie du diffuseur et dans le canal inter-aubes. Les simulations numériques ont été réalisées à l'aide de deux codes de calcul: i-Star CCM+ 8.02.011 (modélisations RANS en « frozen rotor » et en calculs instationnaires), ii-CFX 10.0 (calculs instationnaires, modélisation de la turbulence par DES combinant un modèle RANS avec la LES ). Les mesures réalisées avec les sondes trois trous et les résultats des simulations numériques donnent des informations sur les évolutions des coefficients de pressions statiques et dynamiques. On a pu constater que les performances globales de la machine dépendaient peu des débits de fuite. D'un point de vue local, seules les vitesses radiales et tangentielles sont ici comparées. Les courbes  $v_r$  en fonction du rayon, dans le canal inter-aubes du diffuseur, pour **deux débits encadrant le débit nominal de la roue**, montrent que les résultats expérimentaux sont en bonne correspondance avec la courbe de simulation numérique tenant compte de fuites entre le diffuseur et la roue. L'analyse quantitative des iso valeurs  $v_r$  et  $v_u$  donne une idée des structures présentes dans le diffuseur.

**MOTS CLES :** pompes, diffuseur, mesures PIV, modélisation, sondes

## I INTRODUCTION

Flow behaviour in a radial machine is quite complex and is strongly depending on rotor stator interactions and operating conditions [Adamczyk et al, 1994, Arndt et al, 1990, Eisele et al, 1997].

Experimental intrusive and non-intrusive standard techniques (pressure transducers, hot wire anemometers, laser techniques: Laser Doppler Velocimetry (L.D.V.) and Particle Image Velocimetry (P.I.V.)) allow the knowledge of the flow field due to rotor-stator interactions. Many experiments were conducted to measure pressure fluctuations inside the diffuser of radial pumps by Arndt et al. [1990], Furukawa et al. [2003], Guo and Maruta [2005], Pavesi et al. [2008] and the details of wake transport across the rotor were tracked in continuously running facilities thanks to laser techniques (Akin et al, 1994, Eisele et al, 1997, Akhras et al, 2004, Feng et al ,2007, Benra et al, 2008, Wuibaut et al, 2000, 2006)

In numerical simulations, two aspects have to be considered:

- the first one concerns the governing equations which are solved in the model: three kinds of numerical calculations are currently used in turbo machinery: i-frozen rotor calculations, ii-mixing plane calculations, iii-unsteady calculations. The frozen rotor is the steady state method which uses the rotating reference frame to save the computational resources by converting inherently transient turbo-machinery flow into steady state. The difference between frozen rotor and mixing plane is that mixing plane mixes the flow and applies the average quantities on the interface for upstream and downstream components, while frozen rotor will pass the true flow to downstream and vice versa. So if the wake effect on the downstream component performance is necessary, the frozen rotor method has to be used. A big disadvantage is that, it gives the solution at a single relative position. The true transient method gives the wake effect on the downstream component for all relative positions (as happens in reality) [Culver et al, 2009, Petit et al, 2013, Tamm et al, 2002]

- the second aspect concerns the geometrical model. Some geometrical simplifications are currently used. For example, the leakage flows are often neglected. It is obvious that a complex model (fully unsteady, with leakage flows) will be more time consuming but closer to the real physics.

In this paper, some limits of the numerical models are pointed out. To do so, results of several numerical calculations have been used: i-Frozen rotor without leakage (Star CCM+), ii-Unsteady RANS calculations without leakage (Star CCM+), iii- Unsteady DES (detached eddy simulation) calculations with and without leakage (CFX). These numerical results are compared to experimental results for several flow rates to try to evaluate the effects of the numerical models on the prediction of the performance and on the local behaviour of the flow.

The test model corresponds to the so-called SHF pump, working with air, in similarity conditions compared to water, for which several studies have been made [Dazin et al,2008, 2011, Cavazzini, 2006, Cavazzini et al, 2009, 2011, Wuibaut et al, 2000, 2006] involving numerical and PIV comparisons.. The existing database has been completed by pressure probe measurements in the vaned diffuser of the pump model for a more complete performance analysis.

## II EXPERIMENTS

### II.1 Test and apparatus

**Table 1: Pump characteristics**

Impeller		Diffuser	
Inlet radius	$R_1 = 0.14113 \text{ m}$	Inlet radius	$R_3 = 0.258 \text{ m}$
Outlet radius	$R_2 = 0.257 \text{ m}$	Outlet radius	$R_4 = 0.44 \text{ m}$
Number of blades	$Z_i = 7$	Number of vanes	$Z_d = 8$
Outlet height	$B_2 = 0.0385 \text{ m}$	Height	$B_3 B_4 = 0.04 \text{ m}$
Impeller design flow rate	$Q_i = 0.337 \text{ m}^3/\text{s}$	Diffuser design flow rate	$Q_d = 0.8Q_i$
Rotation speed	$N = 1710 \text{ rpm}$	Impeller-Diffuser radial gap	$1 \text{ mm}$

Test pump model and PIV measurements conditions have been already described in several papers [Cavazzini , 2006, Cavazzini et al 2009] and main pump characteristics are given in table 1. This set-up allows the existence of a “positive” leakage flow going into the gap between impeller outlet section and inlet

92 vaned diffuser section which is specific to the experimental set-up. This is due to the fact that the pump  
93 outlet corresponds to atmospheric conditions.

94 The PIV results come from G. Cavazzini PhD Thesis, [2006].

## 95 II.2 Three holes probes

96 A three holes probe has been used to make hub to shroud traverses. Using a specific calibration one can get  
97 total pressure, static pressure, absolute velocity and its two components in radial and tangential direction.

98 In order to well represent the flow field, twenty-three probe locations are defined as it can be seen in  
99 figure 4. For each location, ten axial positions are registered ( $b^*=0.125, 0.2, 0.25, 0.375, 0.5, 0.625, 0.75,$   
100  $0.875, 0.925, 0.975$  from hub to shroud). The present analysis focuses only on locations 19 to 23 in the blade  
101 to blade diffuser channel.

## 102 II.3 General flow conditions

103 All types of measurements have been performed for several flow rates. But, results presented in this paper  
104 refer only to two flow rates. The first one close to the design point of the vaned diffuser  $Q^*=0.766$  which is  
105 different from the non-dimensional impeller design flow rate  $Q^*=1$  (the vaned diffuser design was chosen in  
106 order to allow an enlarge pump performance characteristic curve for low flow rates). The second normalised  
107 flow rate is equal to 1.134.

## 108 III CALCULATIONS

109 Frozen rotor and unsteady calculations were performed using Star CCM+ code and results are compared  
110 with already published CFX results [Cavazzini, 2006, Cavazzini et al, 2009, 2011].

### 111 III.1 Frozen rotor and unsteady calculations on a simplified geometry without leakage (Star CCM+)

112 The calculation domain was divided into three zones: the inlet zone, the impeller zone and the diffuser  
113 zone. The boundary condition at the inlet consisted of a flow rate. The boundary condition at the outlet was  
114 the atmospheric pressure. The fluid (air) was considered incompressible at a constant temperature of 20°C.

115 A polyhedral mesh with prism layers is used for all calculations (5 prism layers for a total prism layer  
116 thickness of 1 mm).

117

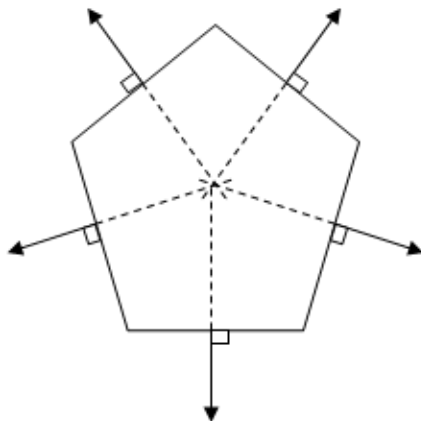


FIG. 1 – good cell

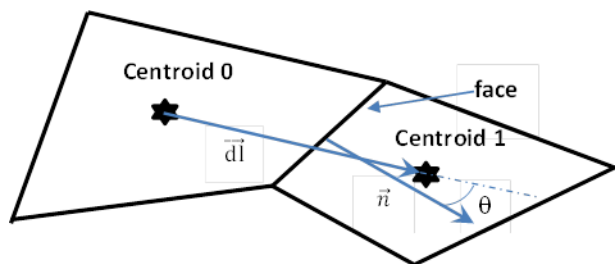


FIG. 2 – skewness angle

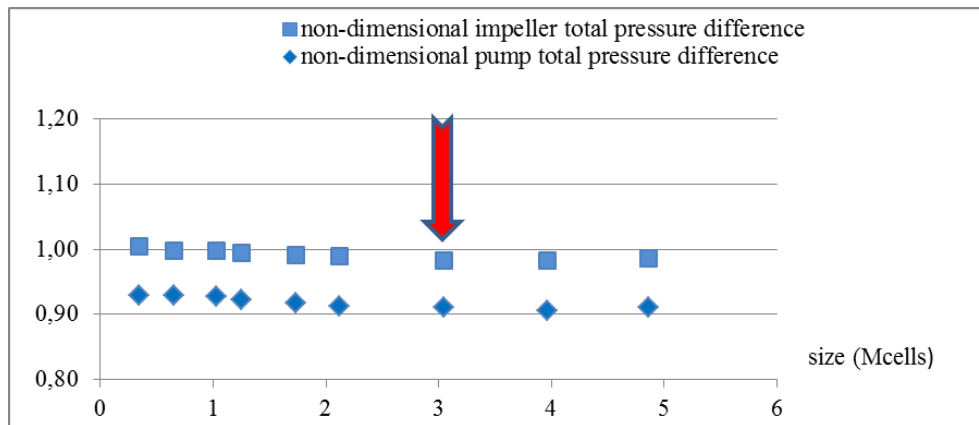
118 The quality of the mesh can be evaluated by some parameters like face validity, cell quality, skewness  
119 angle...In Star CCM+, the volume mesh is built from the surface mesh which is always a triangular mesh.  
120 The quality of this triangular mesh is such that the face validity is equal to 1 for all cells. This means that all  
121 face normal vectors are correctly pointing away from the cell centroid, so all cells are good cells as can be  
122 seen in figure 1. The face validity is an area-weighted measure of the correctness of the face normal vectors  
123 relative to their attached cell centroid.

124 The cell quality metric algorithm is based on a hybrid of the Gauss and least-squares methods for cell  
 125 gradient calculation methods. It depends on the relative geometric distribution of the cell centroids of the  
 126 face neighbour cells and also on the orientation of the cell faces. In the present paper, the major part of cells  
 127 has a cell quality in the range of 0.7 and 1.

128 The skewness angle  $\theta$  is the angle between the face area vector  $\mathbf{n}$  (face normal) and the vector connecting  
 129 the two cell centroids,  $\mathbf{dl}$  as can be seen in figure 2. All cells have a skewness angle lower than 85 degrees  
 130 which is necessary in order to reduce the impact of robustness and the major part (98%) of cells have a  
 131 skewness angle in the range of 0 and 30 degrees.

132 The influence of the mesh size was studied in the case of frozen rotor calculations and for the non-  
 133 dimensional mass flow rate of  $Q^*=0.766$  by modifying the size of the base size which is a reference size. As  
 134 can be observed in figure 3, the non-dimensional increase of total pressure inside the impeller and inside the  
 135 pump don't change significantly for base sizes greater than 0.5 m which corresponds to a grid size of about  
 136  $3 \cdot 10^6$  cells. This base size corresponds to a target size of 3 mm and a minimum size of 0.5 mm.

137



138 **FIG. 3 – Influence of mesh size**

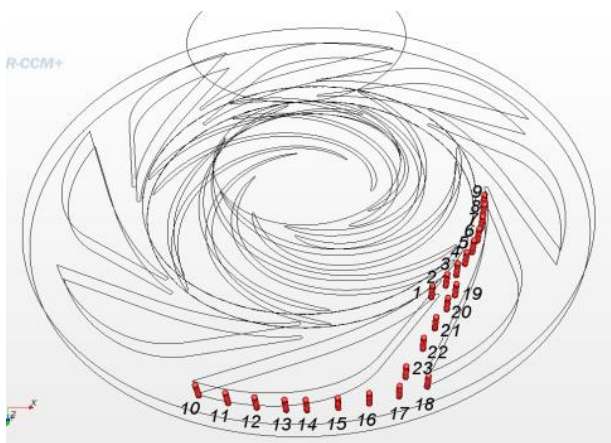
139

140

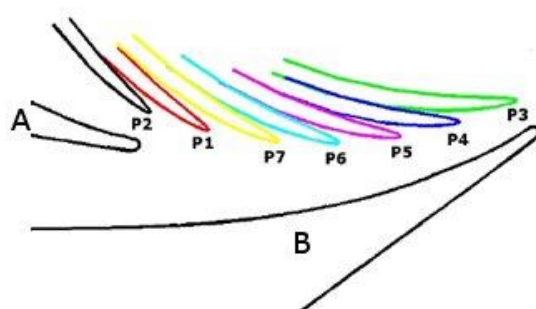
141

**Table 2 : Angular blade positions relative to one diffuser vane**

	P1	P2	P3	P4	P5	P6	P7
Angular positions (deg)	38.16	45.34	7.56	14.70	21.88	29.07	36.25



142 **FIG. 4 - Diffuser measurement locations for probe traverse and unsteady calculations**



143 **FIG.5 - Impeller different angular positions relative to the diffuser vanes**

144

145 The SST  $k-\omega$  turbulence model is used.

Line probes (9 locations) are plotted as defined in figure 4 in order to obtain all parameters (pressure, total pressure, radial, tangential and axial velocity and velocity magnitude) for 7 different impeller angular

146 positions relative to the diffuser vanes (Figure 5, Table 2). In this paper, P3 and P7 are the only positions  
147 presented and discussed.

148 The convergence criteria are less than  $1.e^{-4}$ . Maximum values of  $y^+$  are around 15, and mainly below 9 in  
149 the whole computational domain. A time step, corresponding to an angular rotation of  $1^\circ$ , has been chosen.

150 In this part, fluid leakages are not taken account.

### 151 III.2 DES calculations with and without leakages

152 In order to investigate the influence of leakage flows, numerical results obtained using CFX are also  
153 presented. G. Cavazzini et al [2009, 2011] proposed two kinds of unsteady simulations, with and without  
154 leakage flows. The models and mesh were already presented in previous paper [G. Cavazzini 2009, 2011]

155

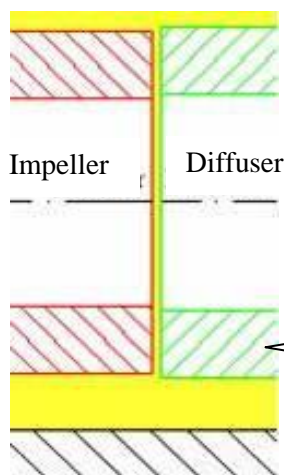


FIG. 6 – Real seal system at the impeller outlet

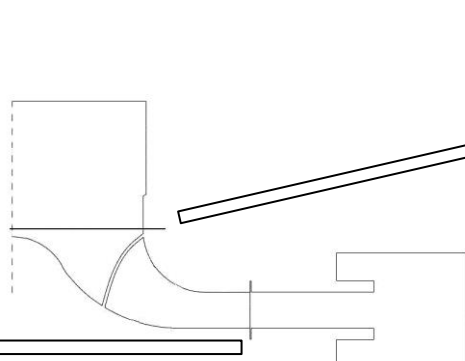


FIG. 7 – Modelisation in CFX

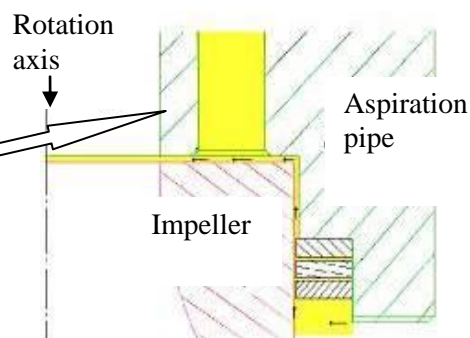


FIG. 8 – Real seal system at the impeller inlet

156

157 As regards the simulations, the leakage flows inside the seal systems (figure 6 & 8) both at the impeller  
158 inlet and outlet taken into account (Figures 6-8). They were estimated by a 1D loss calculations based on the  
159 experimental pressure measurements. They were then prescribed as an inlet boundary conditions in the gap  
160 between the inlet pipe and the diffuser as well as in the one between the impeller and the diffuser (figure 7), ,  
161 assuming stochastic fluctuations of the velocities with 5 % free-stream turbulence intensity Much more  
162 details on model, mesh and numerical simulations are reported in ref [Cavazzini et al, 2009].

## 163 IV RESULTS AND COMPARISONS

### 164 IV.1 Pump performances

165 The numerical, experimental and theoretical performances of the pump are plotted in figure 9. All models  
166 give similar pump heads (isentropic, static, total). Furthermore, for the isentropic pump heads, the results are  
167 slightly lower than the theoretical curve which has been obtained by Euler non-dimensional approach. This  
168 means that both models predict correctly the global behaviour of the flow in the impeller.

169 One can note that the numerical static pressures underestimate the experimental pressure rise, whatever the  
170 numerical scheme adopted. This is particularly obvious for  $Q/Q^* > 1$ . At these flow rates, previous studies  
171 [Cavazzini, 2006, Cavazzini et al, 2009, Wuibaut, 2000] have shown a strong boundary layer detachment at  
172 the diffuser vane leading edge. The calculations may have some difficulties to predict correctly the flow  
173 behaviour in these regions and thus overestimate the losses linked with these phenomena. One can  
174 nevertheless note that the consideration of the leakages seems to improve slightly the performance  
175 prediction.

176 The efficiencies are plotted figure 10. It can be noticed that the frozen rotor calculations overestimates the  
177 impeller efficiencies at partial flow rates probably because this kind of calculation is unable to predict  
178 correctly the unsteady phenomena occurring in the runner at these operating points. It can also be seen that

179 the pump efficiency falls at high flow rate. This is due to the very bad diffuser efficiency at these flow rates,  
 180 because of the great desadaptation of the flow in the diffuser for this operating conditions. (It can be  
 181 reminded that the diffuser design flow rate is  $Q^*=0.766$ )

182

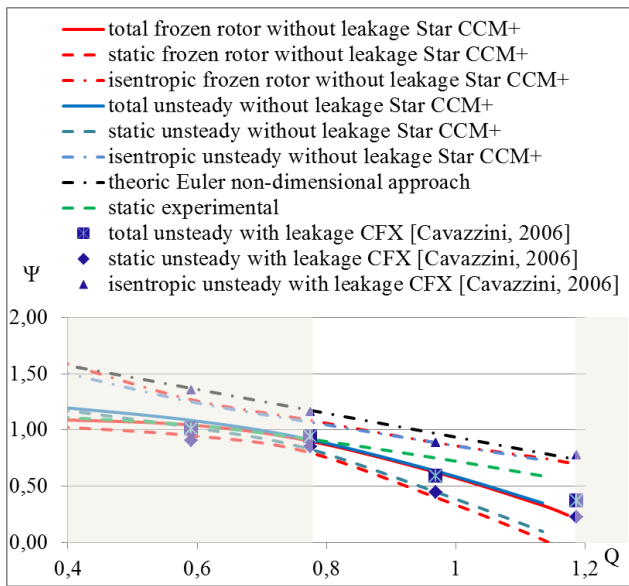


FIG.9 - Pump non-dimensional head curve

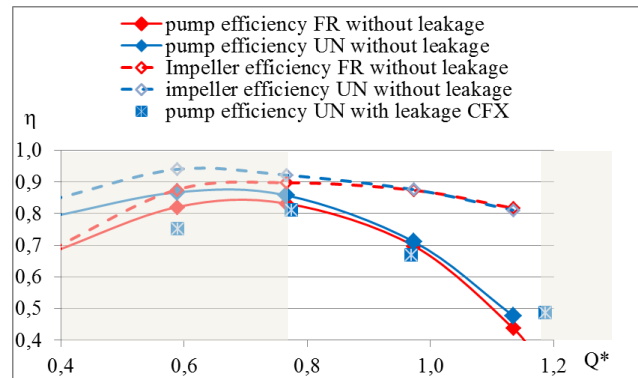


FIG.10 - Pump efficiencies

183 **IV.2 Velocity profiles**

184 Local results are analysed for unsteady calculations, three holes probes and PIV measurements.

185 Figure 11 gives the contours of radial velocities, for  $b^*=0.5$  at mid height inside the diffuser channel  
 186 passage for two angular positions P3 and P7 of the impeller and for two mass flow rates : i- the diffuser  
 187 design flow rate, ii- a higher mass flow rate, upper than the design mass flow rate of impeller. Figure 8 shows  
 188 the contours of tangential velocities in the same conditions than figure 11. The PIV experiments are  
 189 compared to unsteady Star CCM+ calculations.

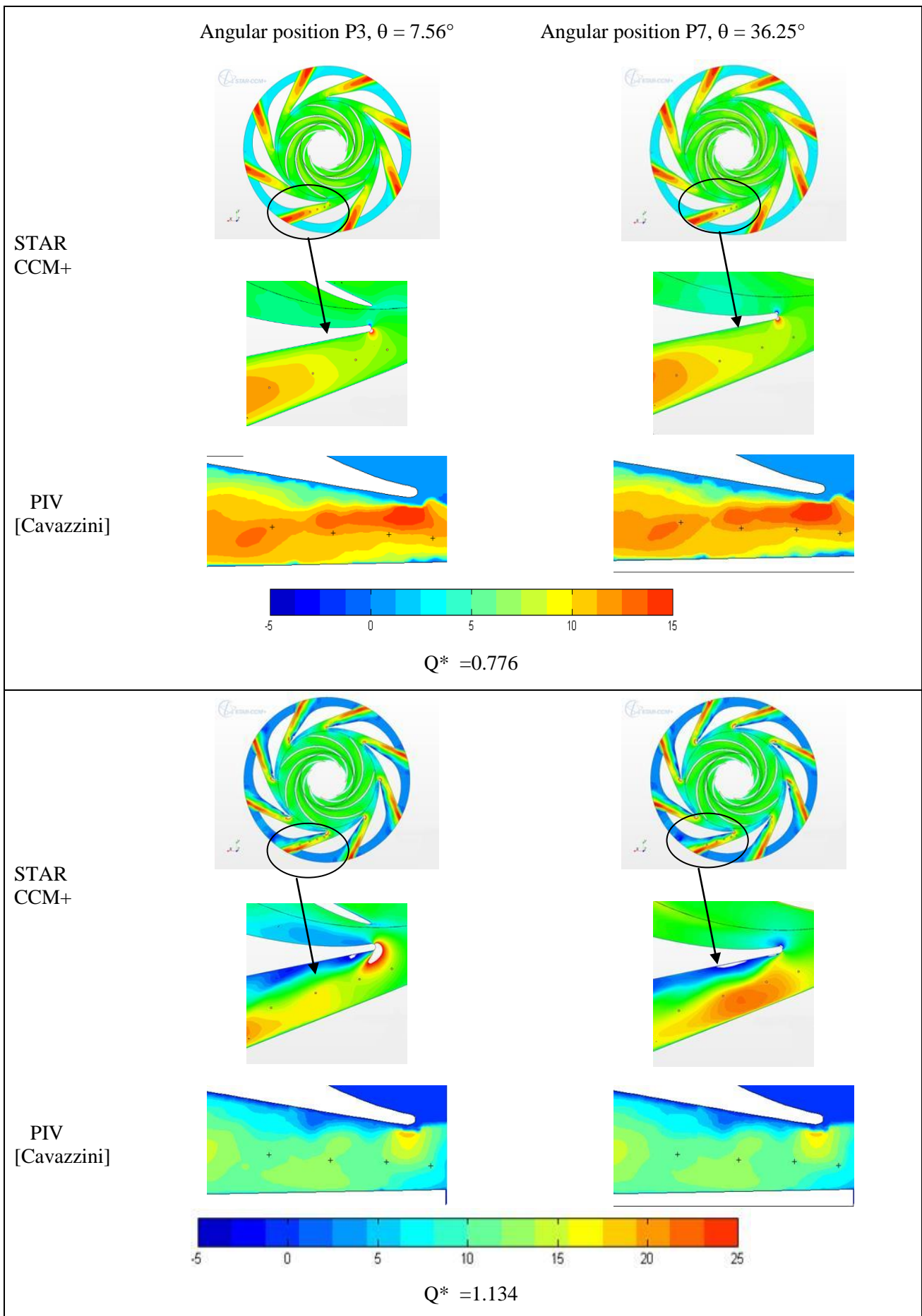
190 The radial and tangential velocity contours at the diffuser design flow rate and for the two angular  
 191 positions of the impeller are very similar for the numerical results and the PIV measurements, but with a  
 192 lower magnitude of velocities in case of calculation. The examination of the contours of tangential velocity  
 193 for the same flow rate and for the two angular positions leads to same comments. This tendency has also  
 194 been observed for other value of  $b^*$  by comparison between numerical calculation and between PIV done by  
 195 G. Cavazzini [2006]. As the experimental results have been performed with pump configuration with  
 196 leakage, it can be supposed that there is a positive leakage between impeller and diffuser.

197 On the contrary, it has been observed, for the radial and tangential velocities contours for high flow rate that  
 198 the tendency inverses. So it can be supposed that fluid leakages are negative in this case.

199 Radial velocity evolutions of unsteady calculations without leakage (obtained from the two different codes:  
 200 “CCM+” and “CFX 1”), and unsteady calculations with leakage (obtained only from CFX [Cavazzini et al,  
 201 2011]: “CFX 2”) are presented in figures 13 and 14 for both flow rates. PIV measurements (“PIV”), and  
 202 three-hole pressure probes (“probes”) results are plotted on the same figures. Results present time-averaged  
 203 values of radial velocities distribution from hub to shroud section as a function of radius.

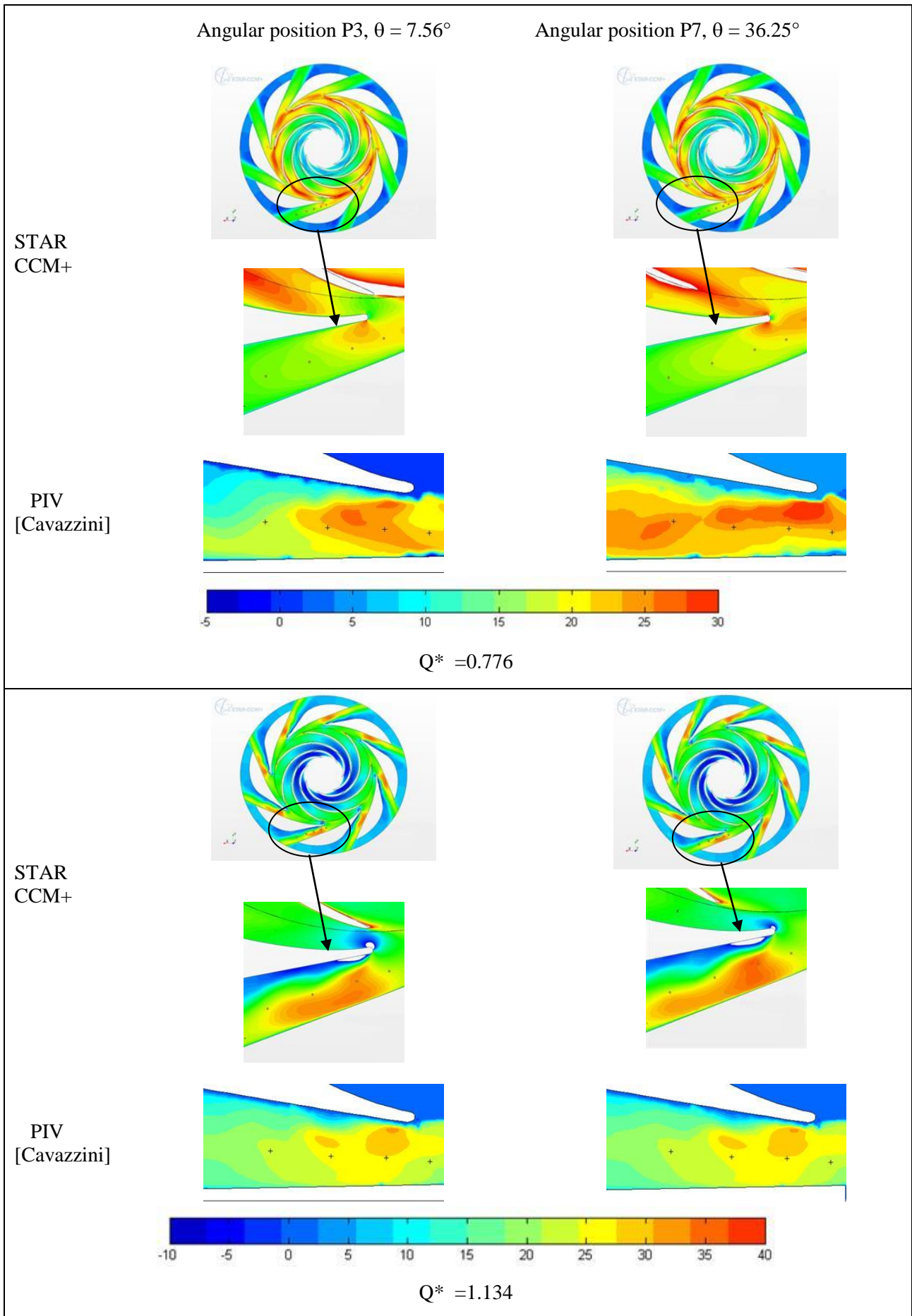
204 The influence of leakage can be confirmed when comparing numerical results obtained without and with  
 205 leakage. Experimental results are in better agreement with calculations obtained with leakage. This can be  
 206 mainly observed on radial velocity distribution shown in figures 13 and 14. For  $Q^*=0.776$ , the mean relative  
 207 difference between experimental and unsteady calculations radial velocities is about 30% for calculations  
 208 without leakage and 13% for calculations with leakage. On the contrary for  $Q^*= 1.134$  numerical results  
 209 without leakage are higher than experimental ones. The mean relative difference is about -17% for  
 210 calculations without leakage and 5% for calculations with leakage.

211 These results must be more deeply analysed, in particular PIV ones; they strongly depend on impeller  
 212 position during its rotation and only time-averaged values are presented here. Pressure probe results are also  
 213 depending on unsteady effects and this has to be taken into account for further data reduction analysis

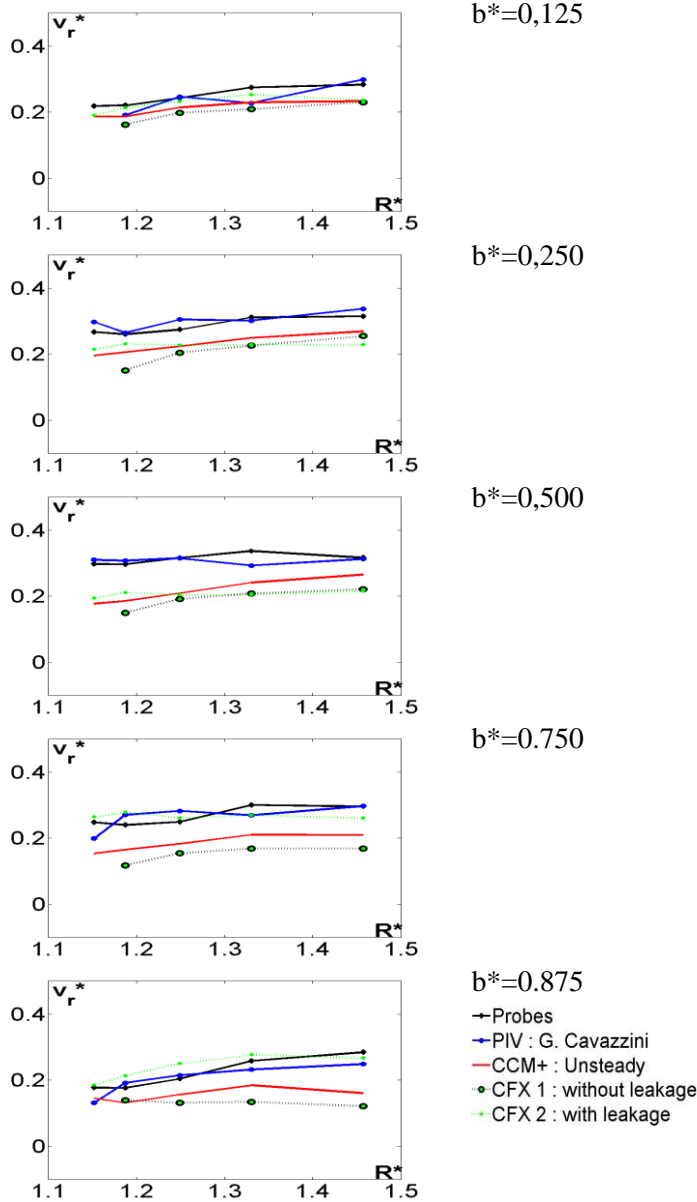


**FIG. 11 - Contours of radial velocities  $V_r$  (m/s)–  $b^*=0.5$**

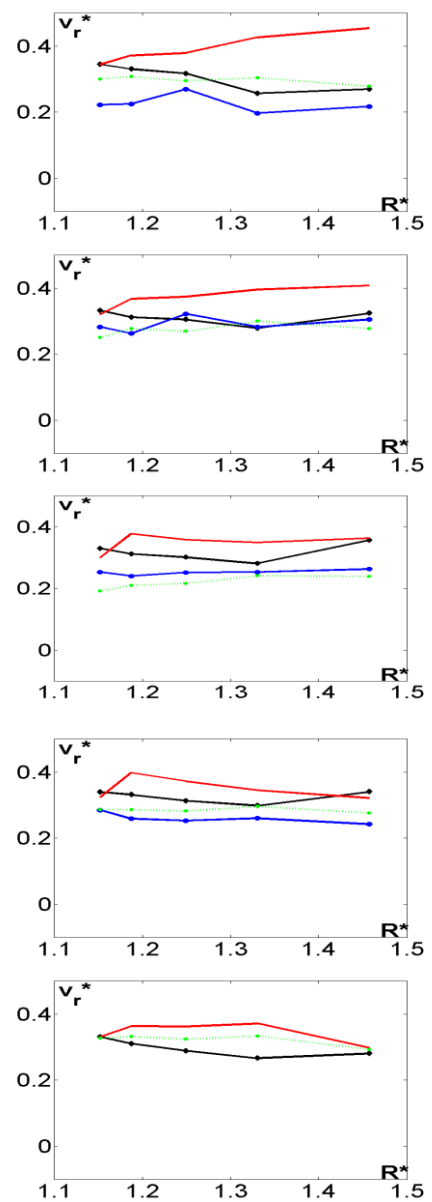




**FIG. 12 - Contours of tangential velocities  $V_u$  (m/s)–  $b^*=0.5$**



**FIG. 13 - Non-dimensional radial velocity  $V_r^*$  with  $R^*$  - Numerical-Experimental comparisons in horizontal cut planes -  $Q^*=0.776$**



**FIG. 14 - Non-dimensional radial velocity  $V_r^*$  with  $R^*$  - Numerical-Experimental comparisons in horizontal cut planes-  $Q^*=1.134$**

217 **V CONCLUSIONS**

218 Comparisons between two numerical 3D approaches, three holes probes and PIV measurements have been  
 219 presented inside the diffuser of a centrifugal impeller at different cut planes inside the diffuser. Two different  
 220 impeller blade positions were considered. Two flow rates were studied. The contours of radial and tangential  
 221 velocity at mid height as well as the time-averaged values of radial velocity distributions underline leakage  
 222 to be an important parameter that has to be taken into account in order to make good comparisons between  
 223 numerical and experiments.

224 Henceforth, simulations with fluid leakages will be realized and unsteady probes will be used in order to  
 225 confirm these previous results. These calculations show few influence of taken account fluid leakage on  
 226 global performance but a real improvement concerning velocity distributions.

## VI NOMENCLATURE

$b$		[m]	Distance from hub
$b^*$	$b/B$	[-]	Non-dimensional distance from hub
$B$		[m]	Blade height
$C$		[mN]	Impeller torque
$dp_s$	$P_{si}-P_{s0}$		
$dp_t$	$P_{ti}-P_{t0}$	[Pa]	Total difference pressure
$N$		[rpm]	Rotation speed
$p$		[Pa]	Pressure
$p_t$		[Pa]	Total pressure
$Q^*$	$Q/Q_i$	[-]	Non-dimensional volume flow rate at impeller's inlet
$Q_d$		[m <sup>3</sup> /s]	Diffuser design flow rate
$Q_i$		[m <sup>3</sup> /s]	Impeller design flow rate
$R$		[m]	Radius
$R^*$	$R/R_2$	[-]	Non-dimensional radius
$v_r$		[m/s]	Radial velocity
$V_r^*$	$v_r/U_2$	[-]	Non-dimensional radial velocity
$v_u$		[m/s]	Tangential velocity
$V_u^*$	$v_u/U_2$	[-]	Non-dimensional tangential velocity
$U_2$	$\Omega * R_2$	[m/s]	Frame velocity at impeller outlet
$Z_d$		[-]	Number of diffuser blades
$Z_i$		[-]	Number of impeller blades
$\rho$		[kg/m <sup>3</sup> ]	Air density
$\Omega$		[rad/s]	Angular Velocity
$\Psi_s$	$dp_s/(\rho U_2^2/2)$	[-]	Non-dimensional static pump head
$\Psi_t$	$dp_t/(\rho U_2^2/2)$	[-]	Non-dimensional total pump head
$\Psi_i$	$C\Omega/(\rho Q U_2^2/2)$	[-]	Non-dimensional isentropic head
Index	0		Domain inlet
	1		Impeller inlet
	2		Impeller outlet
	3		Diffuser inlet
	4		Diffuser outlet

## 228 VII REFERENCES

- 229 Adamczyk J. J., Celestina M. L., Chen J. P. 1994, - Wake induced unsteady flows :their impact on rotor  
 230 performance and wake rectification *ASME International Gas Turbine and Aeroengine Congress and*  
 231 *Exposition*, The Hague, Netherlands, June 13-16, paper 94GT219.
- 232 Akin O., Rockwell D.O. 1994 -Interaction of zones of flow separation in a centrifugal impeller-stationary  
 233 vane system. *Exp. Fluids*. **17** 427-433
- 234 Akhras A., El HajemM., Champagne J.-Y., Morel R. 2004 - The flow rate influence on the interaction of a  
 235 radial pump impeller and the diffuser. *Int. J. Rotating Mach.* **10(4)** 309-317

- 236 Arndt N., Acosta A.J., Brennen C.E., Caughey T.K 1990 - Experimental Investigation of Rotor – Stator  
237 Interaction in a Centrifugal Pump With Several Vaned Diffusers *ASME Journal of Turbomachinery*,  
238 **Vol. 112**, p. 98-108.
- 239 Benra F. K., Feng J., Dohmen J. (2008) - PIV Measurements of Unsteady Flow in a Diffuser Pump at  
240 Different Flow Rates. *12th ISROMAC, Hawaii, USA, February. 17-22*
- 241 Cavazzini G 2006- Experimental and numerical investigation of the rotor-stator interaction in radial  
242 turbomachines, *Ph.D. thesis*, University of Padova, Padova, Italy
- 243 Cavazzini G., Pavesi G., Ardizzon G., Dupont P., Coudert S., Caignaert G., Bois G. 2009 - Analysis of the  
244 rotor-stator interaction in a radial flow pump *Houille blanche – revue internationale de l'eau p. 141-151*
- 245 Cavazzini G., Dupont P., Pavesi G., Dazin A., G.Bois, Atif A., Cherdieu P. 2011 - Analysis of unsteady  
246 flow velocity fields inside the impeller of a radial flow pump : PIV measurements and numerical  
247 calculation comparisons *Proc. of ASME-JSME-HSME Joint fluids engineering conference July 24-29*,  
248 Hamamatsu, Japan
- 249 Culver R., Liu F. 2009 – Plane Method for Flutter Computation in Multi-stage Turbomachines *47<sup>th</sup> AIAA*  
250 *Aerospace Sciences Meeting Including The New Horizons Forum and Aerospace Exposition January 5-*  
251 *8, Orlando, Florida*
- 252 Dazin Antoine; Coutier Delgosha Olivier; Dupont Patrick; Coudert Sébastien; Caignaert Guy; Bois Gérard  
253 2008 - Rotating Instability in the Vaneless Diffuser of a Radial Flow Pump *Journal of Thermal Science*  
254 **17** (4) 368-374
- 255 Dazin Antoine; Cavazzini Giovanna; Pavesi Giorgio; Dupont Patrick; Coudert Sébastien; Ardizzon Guido;  
256 Caignaert Guy; Bois Gérard 2011 - High-speed stereoscopic PIV study of rotating instabilities in a  
257 radial vaneless diffuser *Exp Fluids* **51**(1) 83-93
- 258 Eisele K., Zhang Z., Casey M. V., Gülich J., Schachenmann A. 1997 - Flow analysis in a Pump Diffuser Part  
259 1 : LDA and PTV Measurements of the Unsteady Flow *Transactions of ASME, Journal of Fluids*  
260 *Engineering*, **Vol. 119**, p. 968-977
- 261 Feng J., Benra F, Dohmen H., 2007, Numerical Investigation on Pressure Fluctuations for Different  
262 Configurations of Vaned Diffuser Pumps. *International Journal of Rotating Machinery Volume 2007*  
263 *(2007), Article ID 34752, 10 pages*
- 264 Furukawa A., Takahara H., Nakagawa T., Ono Y. 2003 - Pressure fluctuation in a vaned diffuser  
265 downstream from a centrifugal pump impeller. *Int. J. Rotating Mach.* **9**(4) 285-292
- 266 Guo S., Maruta Y. 2005 - Experimental investigations on pressure fluctuations and vibration of the impeller  
267 in a centrifugal pump with vaned diffusers. *JSME Int. J., Ser. B.* **48**(1) 136-143
- 268 Pavesi G., Cavazzini G., Ardizzon G. [2008] Time-frequency Characterization of the Unsteady Phenomena  
269 in a Centrifugal Pump. *Int. J. Heat and Fluid Flow.* **29** 1527-1540
- 270 Petit O., Nilsson H. 2013 – Numerical Investigations of Unsteady Flow in a Centrifugal Pump with a vaned  
271 Diffuser *International Journal of Rotating Machinery*, **Vol. 2013**, Article ID 961580, 14 pages
- 272 Tamm A., Gugau M., Stoffel B. 2002 – Experimental and 3-D Numerical Analysis of the Flow Field in  
273 Turbomachines- Part I *International Congress on Quality Assessment of Numerical Simulations in*  
274 *Engineering*, Conception – Chile
- 275 **STAR CCM+ user guide**
- 276 Wuibaut G., Dupont P., Caignaert G., Stanislas M. 2000 - Experimental analysis of velocities in the outlet  
277 part of a radial flow pump impeller and the vaneless diffuser using particle image velocimetry  
278 *Proceedings of the XX IAHR Symposium, Charlotte (USA), 6-9 august, paper GU-03.*

279    Wuibaut G., Bois G., El Hajem M., Akhras A., Champagne J. Y.2006 - Optical PIV and LDV “Comparisons  
280       of Internal Flow Investigations in SHF Impeller, *Int. J. of Rotating Machinery*, **Vol. 2006**, p. 1-9