



### **Science Arts & Métiers (SAM)**

is an open access repository that collects the work of Arts et Métiers Institute of Technology researchers and makes it freely available over the web where possible.

This is an author-deposited version published in: <https://sam.ensam.eu>  
Handle ID: [.http://hdl.handle.net/10985/11884](http://hdl.handle.net/10985/11884)

#### **To cite this version :**

Claudio VERGARI, Guillaume DUBOIS, Jean-Luc GENNISSON, Mickael TANTER, Jean DUBOUSSET, Philippe ROUCH, Wafa SKALLI, Raphaël VIALLE - Lumbar annulus fibrosus biomechanical characterization in children by ultrasound shear wave elastography - European Journal of Radiology - Vol. 26, n°4, p.1213–1217 - 2016

Any correspondence concerning this service should be sent to the repository

Administrator : [archiveouverte@ensam.eu](mailto:archiveouverte@ensam.eu)





## Science Arts & Métiers (SAM)

is an open access repository that collects the work of Arts et Métiers ParisTech researchers and makes it freely available over the web where possible.

This is an author-deposited version published in: <http://sam.ensam.eu>  
Handle ID: [.http://hdl.handle.net/null](http://hdl.handle.net/null)

### To cite this version :

Claudio VERGARI, Guillaume DUBOIS, Raphaël VIALLE, Jean-Luc GENNISSON, Mickael TANTER, Jean DUBOUSSET, Philippe ROUCH, Wafa SKALLI - Lumbar annulus fibrosus biomechanical characterization in children by ultrasound shear wave elastography - European Radiology - Vol. 26, n°4, p.1213–1217 - 2015

Any correspondence concerning this service should be sent to the repository

Administrator : [archiveouverte@ensam.eu](mailto:archiveouverte@ensam.eu)

## LUMBAR ANNULUS FIBROSUS BIOMECHANICAL CHARACTERIZATION IN CHILDREN BY ULTRASOUND SHEAR WAVE ELASTOGRAPHY

Claudio Vergari†, Guillaume Dubois†, Raphael Vialle‡, Jean-Luc Gennisson§, Mickael Tanter§, Jean Dubouset†, Philippe Rouch†, Wafa Skalli†

### Abstract

**Objectives** Intervertebral disc (IVD) is key to spine biomechanics, and it is often involved in the cascade leading to spinal deformities such as idiopathic scoliosis, especially during the growth spurt. Recent progress in elastographic techniques allowed access to noninvasively measure cervical IVD in adults; the aim of this study was to determine the feasibility and reliability of shear wave elastography in healthy children lumbar IVD.

**Methods** Elastographic measurements were performed in thirty-one healthy children (6 to 17 years old), in the annulus fibrosus and in the transverse plane of L5-S1 or L4-L5 IVD. Reliability was determined by 3 experienced operators repeating measurements.

**Results** Average shear wave speed in IVD was  $2.9 \pm 0.5$  m/s; no significant correlations were observed with sex, age or body morphology. Intra-operator repeatability was 5.0 % while inter-operator reproducibility was 6.2 %. Intraclass correlation coefficient was higher than 0.9 for each operator.

**Conclusions** Feasibility and reliability of IVD shear wave elastography was demonstrated. The measurement protocol is compatible with the clinical routine, and the results show the potential to give an insight into spine deformity progression and early detection.

**Keywords:** Spine; Spinal diseases; Fibrocartilage; Tissue elasticity imaging; Pediatrics

### Key points:

- Intervertebral disc mechanical properties are key to spine biomechanics.
- Feasibility of shear wave elastography in children lumbar disc was assessed.
- Measurement was fast and reliable.
- Elastography could represent a novel biomarker for spine pathologies.

† Arts et Metiers ParisTech, LBM/Institut de Biomecanique Humaine Georges Charpak, 151 bd de l'Hopital 75013 PARIS - FRANCE

‡ Department of Paediatric Orthopaedics, Armand Trousseau Hospital, Université Pierre et Marie Curie-Paris 6, 75571, Paris, France

§ Institut Langevin, Ondes et Images, ESPCI ParisTech, CNRS UMR7587, INSERM U979, Paris, France

## Introduction

Intervertebral disc (IVD) is a key component of spine biomechanics. It consists of a gelatinous central zone, the *nucleus pulposus*, surrounded radially by the fibro-cartilaginous layers of the *annulus fibrosus* and confined below and atop by the cartilage endplates of the adjacent vertebral bodies [1]. This highly specialized structure allows the spine to be flexible while withstanding high compressive, torsional and shearing loads [2].

IVD has been often suspected to initiate the development and facilitate progression of spine deformities, although it is not necessarily the only one initiating cause. Spinal deformities such as Adolescent idiopathic scoliosis (AIS) are associated with alterations of IVD metabolism, content and morphology [3-6], especially in the lumbar region. The biomechanical environment can affect all these aspects; for instance, according to the Hueter-Volkman principle, the disc-mediated vertebral loading affects the vertebral growth and wedging [7]. This is confirmed by the well-known association between the patient's spinal growth spurt and the onset and progression of AIS.

In normal conditions, with increasing age, water is lost from the matrix and the proteoglycan content changes and diminishes. The disc - particularly the nucleus - becomes less gelatinous and more fibrous, and cracks and fissures eventually form. In AIS patients, minor histological alterations of the disc can be observed as soon as 3-7 years of age and they significantly increase after 16 years of age [8]; asymmetric loading, which is characteristic of scoliosis, can add to the detrimental effects of aging on disc biology [9].

The role of IVD mechanical properties in the progression of curve deformities, however, is still unknown. This is in part due to the difficulties of

measuring IVD properties *in vivo*. Spinal flexibility and intervertebral stiffnesses have been assessed by traction, bending or fulcrum tests [10-12] tests; these techniques, however, do not allow direct measurement of IVD biomechanical properties and require invasive radiographic techniques. Non-invasive techniques based magnetic resonance elastography are being developed to investigate disc mechanical properties [13-15].

A non-invasive and clinical-compatible means of measuring IVD properties could be a useful tool in several orthopedic applications; it could potentially help surgeons and clinicians in determining spine instrumentation levels, detect progressive and stable scoliosis, follow-up physical therapy, etc.

Recently, ultrasound shear wave elastography has been applied to measure cervical IVD *in vivo* [16]. This non-invasive technique [17] allows the measurement of shear wave speed (SWS) in the tissue, which is directly related to the tissue mechanical properties [18]. In particular, a correlation has been reported between SWS *in vitro* measurements and the stiffness and apparent elastic modulus of oxtail functional units (vertebra-disc-vertebra complex) [19].

Lumbar discs, however, are deeper than cervical discs and they are placed beside large arteries (the right and left iliac arteries) pulsating right against it. The aim of the present work was to determine the feasibility and reliability of shear wave elastography to study lumbar intervertebral disc in children and adolescents.

## Methods

### Subjects

Thirty-one healthy children participated in this study ( $11 \pm 3$  years old, ranging from 6 to 17, 16 girls and 15 boys); one girl was excluded because she

had history of surgery of the sigmoid colon, which induced severe intestinal gas accumulation. Both parents signed an informed consent, as approved by the ethical committee (CPP 6001 Ile de France VI).

### IVD Imaging

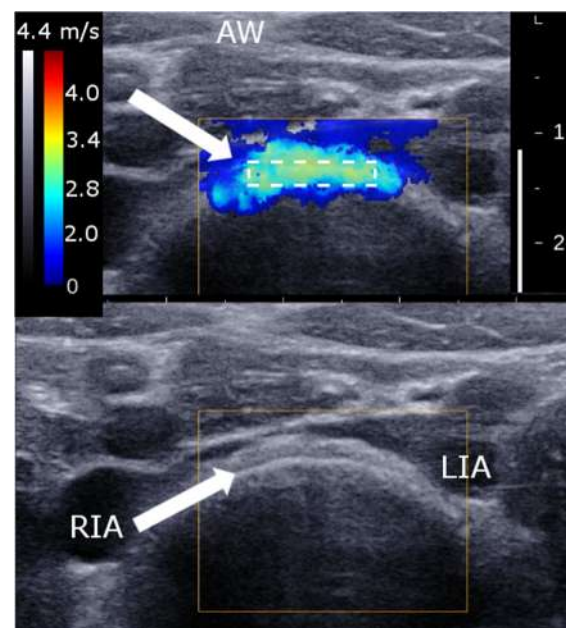
SWS measurements were performed with an Aixplorer (SuperSonic Imagine, France) and either a SuperLinear SL 15-4 ultrasound probe or, if a stable elastographic signal could not be obtained, with a SuperLinear SL 10-2 probe. Imaging depth, focus position and size of elastographic window were adapted for each measurement, while all measurements were performed in “penetration mode”.

The subjects lied supine during the measurement; no particular direction was given about breathing or talking. The probe was placed at the L5-S1 or L4-L5 vertebral level, in the same plane of the disc; this level was determined by observing the distance between the right and left iliac arteries and, if necessary, by following them down from the aortic bifurcation [20]. The vertebral bodies were identified as bright thin round lines around a hypoechoic middle (since ultrasound do not penetrate bone) while the IVD allow some ultrasound penetration (~5 mm, Fig. 1) and therefore is more echogenic. In several cases, *lamellae* were clearly visible (Fig. 1). Once the IVD was found, the probe was rotated and tilted to look for the IVD middle plane, where the disc was more echogenic and the elastographic signal was relatively smooth and stable.

### Protocol

Three clips of about 10 seconds were recorded for each subject (~10 elastographic frames per clip). Data was post-processed using custom software to allow selection and semi-automatic tracking of a region of interest (ROI), which was placed in the *annulus fibrosus* (Fig. 1) in each elastographic frame, as

previously described [19]. Images with too much noise or saturation in the elastographic chart were discarded. The space-average SWS was calculated in the ROI of each frame, then the time-average SWS was calculated in all frames of a given clip, and then the subject average was calculated over the three clips. Time of measurement was retrieved from images time stamp.



**Fig. 1** Example of elastographic image (top frame) and ultrasonography (bottom frame) of lumbar intervertebral disc in an 8 years old girl. The *annulus fibrosus* is indicated by the white arrow (*lamellae* are visible). Abdominal wall (AW) is visible in the top of the image. Right and left common iliac arteries (RIA and LIA) are also visible. The dashed rectangle is the region of interest (ROI) in the *annulus fibrosus*.

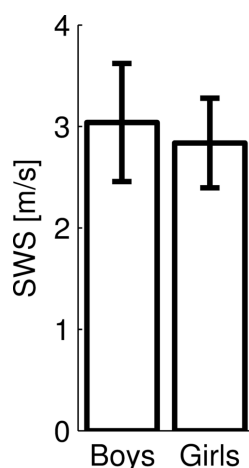
### Reliability and statistics

Measurement reliability (intra-observer repeatability and inter-observer reproducibility) was assessed on a subset of 5 children (average age:  $10 \pm 2$  years). Six measurements (i.e. six 10-seconds clips) were repeated by three experienced operators in random order. The probe was repositioned after each measurement. Repeatability and reproducibility were determined according to ISO 5725 standard. Intraclass correlation coefficient

(ICC) was also determined both intra- and inter-operator; an ICC greater than 0.75 was considered to signify good agreement. Probe effect was determined by repeating measurements with both a high (SL 15-4) and low frequency (SL 10-2) probe on five children. Differences were analyzed with Wilcoxon rank sum tests and correlations were quantified with Spearman's rank correlation coefficient; significance was set at 0.05.

## Results

Intra-operator repeatability was 0.22 m/s (7.5 %) while inter-operator reproducibility was 0.25 m/s (8.7 %) for a single measurement. Repeating three measurements and averaging the result allowed lowering repeatability and reproducibility confidence intervals to 5.0 % and 6.2 % respectively. Intra-operator ICC was higher than 0.9 for each operator (0.98, 0.98, and 0.96, respectively), while inter-operator ICC was 0.98. Difference between measurements performed with the two probes (Table 1) was lower than percentage measurement uncertainty.



**Fig. 2** Shear wave speed (SWS) in boys (n = 15) and girls (n=16).

Average SWS in lumbar IVD was  $2.9 \pm 0.5$  m/s, ranging from 1.8 to 3.9 m/s. SWS difference between girls ( $2.8 \pm 0.5$

m/s) and boys ( $3.0 \pm 0.6$  m/s) was not significant (Fig. 2,  $p = 0.19$ ).

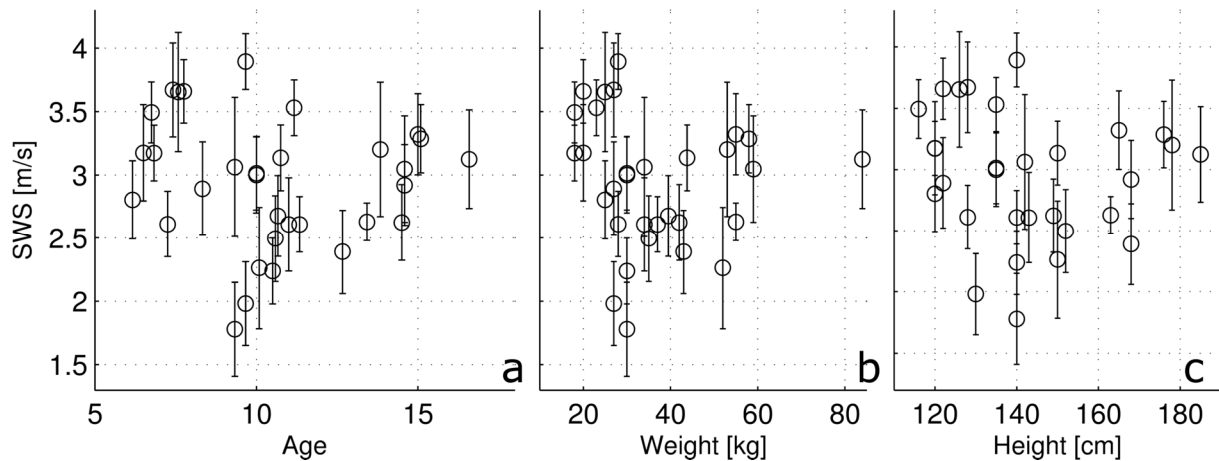
No significant correlations were observed between SWS and subjects' age (Fig. 3a), weight (Fig. 3b), or height (Fig. 3c) or time of measurement.

## Discussion

Biomechanical characterization of the intervertebral disc (IVD) *in vivo* could represent a novel non-invasive biomarker [13] for a range of spinal pathologies. Investigations in this sense, especially in the younger population, have been slowed down by the difficulties of assessing disc mechanical properties *in vivo*. In research, *in vitro* testing are informative on IVD properties, but cadaveric studies are usually performed in specimens harvested from older population. Moreover, *in vitro* testing presents limitations such as specimen preparation, hydration, conditioning and preload, etc. [21-23].

In particular, it is well known that IVD properties depend on loading history [24], to the extent that significant changes in stature resulting from disc shrinkage and recovery, can be measured, especially in the lumbar region, over a 24-hour period or following short-term spinal loading [25; 26]. This aspect was not accounted for in the present study, since the time of measurement was recorded but not controlled, as well as the activity of the child before the session. However, no major effect due to session time of day was observed. Circadian variations of disc mechanical properties could be more thoroughly investigated with this technique, together with the effects of physical activity or posture.

The mechanical information conveyed by IVD elastography needs further investigation. From a theoretical point of view, the SWS measured in the *annulus* is directly related to the shear modulus in the plane of the image (i.e., the transverse plane of the disc), with a



**Fig. 3** Relationship between shear wave speed (SWS) and subjects' age (a), weight (b) and height (c). Bars represent subject standard deviation.

polarization parallel to the *lamellae* [18]. In other words, SWS measurements should be directly related to the tangent shear modulus of the annulus,  $\mu_T$ , by the following equation:  $\mu_T = \rho \cdot SWS^2$ , where  $\rho$  is the tissue mass density (usually considered equal to  $1000 \text{ kg/m}^3$ ). No simple theoretical relation exists between this particular mechanical parameter and the global behavior of the functional unit. However, an *in vitro* study on oxtail samples showed correlations between SWS measurement in IVD transverse plane and the functional unit compressional behavior [19].

Measurement reliability and inter-observer agreement for a single measurement was similar to the one previously obtained in adult cervical disc (0.2 - 0.3 m/s) and in *in vitro* measurements (0.2 - 0.4 m/s) [16; 19], and it was similar or better than those obtained in elastographic evaluation of other soft tissues (for instance, 6.8 % in lower limb muscles [27], 15.6 % in tendon [28], ICC = 0.87 in breast masses [29]). No operator effect was observed, which is not surprising since, unlike muscles, IVD is a deep structure and its measurement is not affected by probe pressure.

The measurement session for one IVD lasts about 5-10 minutes; first it is necessary to find the anatomical landmarks

(i.e. the bifurcation of the aorta to be followed down the right and left iliac arteries, Fig. 1). Then, the position of the intervertebral disc must be determined, and its orientation, in order to obtain a reliable signal (i.e., stable). This last part can last a few minutes because the intestinal contents, gas in particular, can strongly attenuate and reflect ultrasound waves. The continuous pressure of the probe, however, helps displacing these contents while at the same time allowing the probe to get nearer to the disc. One girl was excluded from the study because a stable elastographic image of her L5-S1 disc could not be obtained. This girl had large quantities of intestinal gas, producing well-known "comet tail" artifacts [30], which could not be displaced even after a few minutes of probe pressure.

One measurement (a 10 second clip) takes a few seconds; therefore, it is advisable to adopt as standard protocol to repeat at least 3 measurements in order to average the results and thus significantly reduce the measurement confidence interval.

Measurements were initially performed in all patients with a high frequency probe (SL 15-4, 4-15 MHz bandwidth); if a stable elastographic measure in the disc was not obtained, the lower frequency probe (SL 10-2, 2-10 MHz bandwidth) was used. The former

**Table 1.** Shear wave speed measurements in lumbar annulus performed with a high (SL 15-4) and low (SL 10-2) frequency probe in five children. Differences were lower than percentage uncertainty of measurement.

Subject	#1	#2	#3	#4	#5
SL 15-4 (m/s)	3.9 ± 0.2	2.1 ± 0.1	3.7 ± 0.3	3.2 ± 0.2	2.6 ± 0.2
SL 10-2 (m/s)	3.6 ± 0.1	2.2 ± 0.3	3.5 ± 0.2	3.4 ± 0.2	2.8 ± 0.3
Difference (m/s)	0.3 [6.8 %]	0.1 [7.1 %]	0.1 [3.7 %]	0.2 [7.2 %]	0.2 [8.4 %]

yields higher resolution images, but the high frequency ultrasound waves it generates are more attenuated and in some cases shear waves were not properly generated in the disc (i.e., the elastographic signal was absent). In those cases, the lower frequency probe was employed, since the ultrasound waves it generates penetrated more deeply in the tissue, albeit yielding lower resolution images. Results showed that for quantitative results the two probes can be used alternatively since they yield similar SWS values (Table 1).

Previous measurement in adult cervical disc showed an average SWS of  $3.0 \pm 0.4$  m/s; SWS was higher for the younger adult population ( $3.3 \pm 0.3$  m/s for 22-30 years old) than the older ( $2.7 \pm 0.3$  m/s for over 50 years old) [16]. Lumbar disc in children yielded similar average value in the present study ( $2.9 \pm 0.5$  m/s); although the inter-subject variability indicated by the standard deviation is higher in children lumbar IVD (0.5 m/s against 0.3 m/s in adult cervical IVD), the extreme values were similar in the two populations (1.8 and 3.9 m/s in the present study against 2.2 and 3.9 m/s in adult cervical IVD).

The results of this work are promising, and they open the way for a new non-invasive mean of investigation for lumbar disc that shows the potential of becoming a biomarker for spine pathologies in children.

### Acknowledgements

The authors are grateful to the ParisTech BiomecAM chair program on subject-specific musculoskeletal modelling (with the support of ParisTech and Yves Cotrel Foundations, Société Générale, Proteor and Covea) and to the “Investissements d'Avenir” program for funding. We would also like to thank Dr. Pauline Lallemand and Ms Sonia Simoes for their technical help.

### Conflict of interest statement

Jean-Luc Gennisson is a scientific consultant for SuperSonic Imagine, and Mickael Tanter is cofounder and shareholder of SuperSonic Imagine (Aix-en-Provence, France). The other authors do not have any conflicting financial interests.



## References

1. Humzah MD, Soames RW (1988) Human intervertebral disc: Structure and function. *Anat. Rec.* 220:337-356
2. Rohlmann A, Pohl D, Bender A, et al. (2014) Activities of everyday life with high spinal loads. *PloS one* 9:e98510
3. Modi H, Suh S, Song H-R, Yang J-H, Kim H-J, Modi C (2008) Differential wedging of vertebral body and intervertebral disc in thoracic and lumbar spine in adolescent idiopathic scoliosis - A cross sectional study in 150 patients. *Scoliosis* 3:11
4. Hristova GI, Jarzem P, Ouellet JA, et al. (2011) Calcification in human intervertebral disc degeneration and scoliosis. *J Orthop Res* 29:1888-1895
5. Melrose J, Gurr KR, Cole TC, Darvodelsky A, Ghosh P, Taylor TK (1991) The influence of scoliosis and ageing on proteoglycan heterogeneity in the human intervertebral disc. *J Orthop Res* 9:68-77
6. Roberts S, Menage J, Eisenstein SM (1993) The cartilage end-plate and intervertebral disc in scoliosis: calcification and other sequelae. *J Orthop Res* 11:747-757
7. Stokes IA, Spence H, Aronsson DD, Kilmer N (1996) Mechanical modulation of vertebral body growth. Implications for scoliosis progression. *Spine* 21:1162-1167
8. Weiler C, Schietzsch M, Kirchner T, Nerlich AG, Boos N, Wuertz K (2012) Age-related changes in human cervical, thoracic and lumbar intervertebral disc exhibit a strong intra-individual correlation. *Eur Spine J* 21 Suppl 6:S810-818
9. Walter BA, Korecki CL, Purmessur D, Roughley PJ, Michalek AJ, Iatridis JC (2011) Complex loading affects intervertebral disc mechanics and biology. *Osteoarthritis Cartilage* 19:1011-1018
10. Little JP, Adam C (2012) Towards determining soft tissue properties for modelling spine surgery: current progress and challenges. *Med Biol Eng Comput* 50:199-209
11. Matsumoto T, Kitahara H, Minami S, et al. (1997) Flexibility in the scoliotic spine: three-dimensional analysis. *J Spinal Disorders* 10:125-131
12. Farshad-Amacker NA, Nguyen TD, Farshad M, Andreisek G, Min K, Frauenfelder T (2015) Semiautomatic superimposition improves radiological assessment of curve flexibility in scoliosis. *Eur Radiol* 25:860-864
13. Cortes DH, Magland JF, Wright AC, Elliott DM (2014) The shear modulus of the nucleus pulposus measured using magnetic resonance elastography: A potential biomarker for intervertebral disc degeneration. *Magnet Reson Med* 72:211-219
14. Maquer G, Brandejsky V, Benneker LM, Watanabe A, Vermathen P, Zysset PK (2014) Human intervertebral disc stiffness correlates better with the Otsu threshold computed from axial T2 map of its posterior annulus fibrosus than with clinical classifications. *Med. Eng. Phys.* 36:219-225
15. Streitberger K-J, Diederichs G, Guo J, et al. (In Press) In vivo multifrequency magnetic resonance elastography of the human intervertebral disk. *Magnet Reson Med.* 10.1002/mrm.25505
16. Vergari C, Rouch P, Dubois G, et al. (2014) Non-invasive biomechanical characterization of intervertebral disc by shear wave elastography *Eur Radiol* 24:3210-3216
17. Bercoff J, Tanter M, Fink M (2004) Supersonic shear imaging: a new technique for soft tissue elasticity mapping. *IEEE Trans Ultrason Ferroelectr Freq Control* 51:396-409
18. Royer D, Gennisson JL, Deffieux T, Tanter M (2011) On the elasticity of transverse isotropic soft tissues (L). *J Acoust Soc Am* 129:2757-2760

19. Vergari C, Rouch P, Dubois G, et al. (2014) Intervertebral disc characterization by shear wave elastography: an in-vitro preliminary study. *Proc Inst Mech Eng H* 228:607-615
20. Deswal A, Tamang BK, Bala A (2014) Study of aortic- common iliac bifurcation and its clinical significance. *Journal of clinical and diagnostic research : JCDR* 8:ACo6-o8
21. Recuerda M, Cote SP, Villemure I, Preie D (2011) Influence of experimental protocols on the mechanical properties of the intervertebral disc in unconfined compression. *J Biomech Eng* 133:071006
22. Costi JJ, Hearn TC, Fazzalari NL (2002) The effect of hydration on the stiffness of intervertebral discs in an ovine model. *Clin Biomech (Bristol, Avon)* 17:446-455
23. Hirsch C, Galante J (1967) Laboratory conditions for tensile tests in annulus fibrosus from human intervertebral discs. *Acta Orthop Scand* 38:148-162
24. Kuo YW, Wang JL (2010) Rheology of intervertebral disc: an ex vivo study on the effect of loading history, loading magnitude, fatigue loading, and disc degeneration. *Spine* 35:E743-752
25. Wing P, Tsang I, Gagnon F, Susak L, Gagnon R (1992) Diurnal changes in the profile shape and range of motion of the back. *Spine* 17:761-766
26. Tyrrell AR, Reilly T, Troup JD (1985) Circadian variation in stature and the effects of spinal loading. *Spine* 10:161-164
27. Lacourpaille L, Hug F, Bouillard K, Hogrel J-Y, Nordez A (2012) Supersonic shear imaging provides a reliable measurement of resting muscle shear elastic modulus. *Physiol. Meas.* 33:N19
28. DeWall RJ, Slane LC, Lee KS, Thelen DG (2014) Spatial variations in Achilles tendon shear wave speed. *J Biomech* 47:2685-2692
29. Cosgrove D, Berg W, Doré C, et al. (2012) Shear wave elastography for breast masses is highly reproducible. *Eur Radiol* 22:1023-1032
30. Wilson SR, Burns PN, Wilkinson LM, Simpson DH, Muradali D (1999) Gas at Abdominal US: Appearance, Relevance, and Analysis of Artifacts. *Radiology* 210:113-123