



Science Arts & Métiers (SAM)

is an open access repository that collects the work of Arts et Métiers Institute of Technology researchers and makes it freely available over the web where possible.

This is an author-deposited version published in: <https://sam.ensam.eu>
Handle ID: <http://hdl.handle.net/10985/9262>

To cite this version :

Patrick DUPONT, Annie-Claude BAYEUL-LAINE, Gérard BOIS, Olivier ROUSSETTE, Qiaorui SI, Antoine DAZIN - Leakage flow simulation in a specific pump model - IOP Conf. Series: Earth and Environmental Science - Vol. 22, p.1-10 - 2014

Any correspondence concerning this service should be sent to the repository

Administrator : scienceouverte@ensam.eu



Leakage flow simulation in a specific pump model

P. Dupont¹, A.C. Bayeul-Lainé², A. Dazin², G. Bois², O. Roussette², Q. Si³

¹LML, UMR CNRS 8107, Ecole Centrale de Lille, Cité Scientifique - CS20048, 59651 Villeneuve d'Ascq Cedex, France

²LML, UMR, CNRS 8107, Arts et Métiers PARISTECH, 8, boulevard Louis XIV 59046 Lille Cedex, France

³ResearchCenter of Fluid Machinery Engineering and Technology, JiangsuUniversity, Zhenjiang, Jiangsu 212013, China

Annie-claude.bayeul-laine@ensam.eu

Abstract. This paper deals with the influence of leakage flow existing in SHF pump model on the analysis of internal flow behaviour inside the vane diffuser of the pump model performance using both experiments and calculations. PIV measurements have been performed at different hub to shroud planes inside one diffuser channel passage for a given speed of rotation and various flow rates. For each operating condition, the PIV measurements have been triggered with different angular impeller positions. The performances and the static pressure rise of the diffuser were also measured using a three-hole probe. The numerical simulations were carried out with Star CCM+ 8.06 code (RANS frozen and unsteady calculations). Comparisons between numerical and experimental results are presented and discussed for three flow rates. The performances of the diffuser obtained by numerical simulation results are compared to the performances obtained by three-hole probe indications. The comparisons show few influence of fluid leakage on global performances but a real improvement concerning the efficiency of the impeller, the pump and the velocity distributions. These results show that leakage is an important parameter that has to be taken into account in order to make improved comparisons between numerical approaches and experiments in such a specific model set up.

1. Introduction

This work is an extended study that had originated in LML laboratory concerning the well-known SHF (Société Hydrotechnique de France) pump. A lot of experimental data have already been produced (tests in air and in water) on that geometry and these results are used as databases for the validation of numerical calculation results and for new experimental results [1-8]

Flow behaviour in a radial machine is quite complex and strongly depends on rotor stator interactions and operating conditions [9-11].

In numerical simulations, two aspects have to be considered:

- The first one concerns the governing equations which are solved in the model. Three kinds of numerical calculations are currently used in turbo machinery (frozen rotor calculations, mixing plane calculations, unsteady calculation). The frozen rotor calculation is the steady state method which uses the rotating reference frame to save the computational resources by converting inherently transient turbo-machinery flow into steady state. The difference between a frozen rotor and a mixing plane calculation is that the mixing plane mixes the flow and applies the average quantities on the interface

for upstream and downstream components, while a frozen rotor will pass the true flow to downstream and vice versa. So if the wake effect on the downstream component performance is necessary, the frozen rotor method has to be used. A big disadvantage is that it gives the solution at a single relative position. The true transient method gives the wake effect on the downstream component for all relative positions (as it happens in reality) [12-14].

- The second aspect concerns the geometrical model. Some geometrical simplifications are currently used. For example, the leakage flows are often neglected. It is obvious that a complex model (fully unsteady, with leakage flows) will be more time consuming but closer to the real physics. In the presence of a gap, a leakage flow appears due to the difference of static pressure at the clearance between the shroud and the outer casing and between the hub and the outer casing.

In this respect, the effects of fluid leakage due to the gap between the rotating and the fixed part of this pump model are analysed and discussed.

In this paper, some limits of the numerical models are pointed out. To do so, several numerical calculations have been carried out: i-Frozen rotor without leakage, ii-Unsteady RANS calculations without leakage, iii-Frozen rotor with leakage and iv-Unsteady RANS calculations with leakage

These numerical results are compared to experimental results for three flow rates to try to evaluate the effects of the numerical models on the prediction of the performance and on the local behaviour of the flow.

2. Experiments

2.1. Test and apparatus

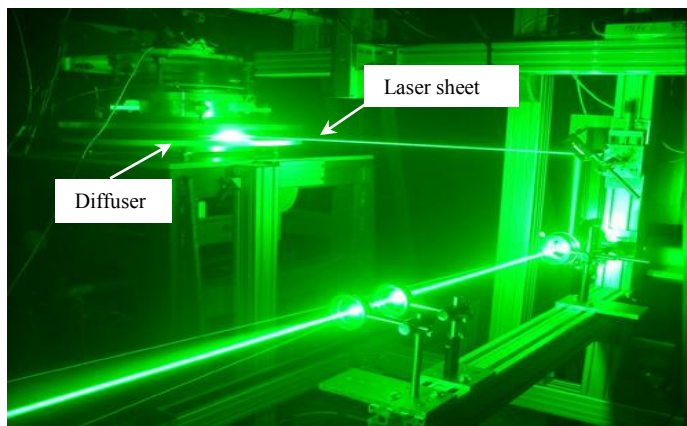


Figure 1. Apparatus: PIV measurement, laser sheet.

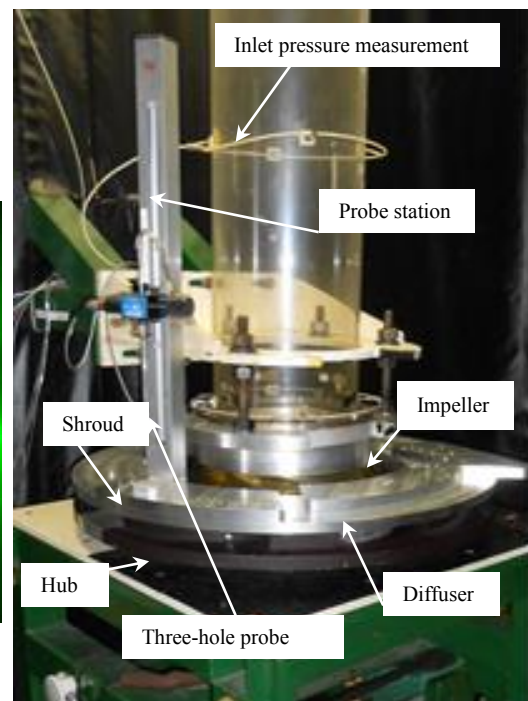


Figure 2. Apparatus: three-hole probe.

The test model corresponds to the so-called SHF pump, working with air, in similarity conditions compared to water, for which several studies have been made [1-5;15-16] involving numerical and PIV comparisons. The Optical assembly to create a laser sheet in one diffuser blade passage can be shown in figure 1. The existing database has been completed by pressure probe measurements for a complete performance analysis in the vane diffuser part of the pump model. The test rig used for the

three-hole probe (figure 2) was the same as the one already developed for the PIV measurement already described in the previous papers, especially in reference [4].

Impeller		Diffuser	
Inlet radius	$R_1 = 0.14113 \text{ m}$	Inlet radius	$R_3 = 0.2736 \text{ m}$
Outlet radius	$R_2 = 0.2566 \text{ m}$	Outlet radius	$R_4 = 0.3978 \text{ m}$
Number of blades	$Z_i = 7$	Number of vanes	$Z_d = 8$
Outlet height	$b_2 = 0.0384 \text{ m}$	Height	$b_3 = 0.04 \text{ m}$
Impeller design flow rate	$Q_i = 0.337 \text{ m}^3/\text{s}$	Diffuser design flow rate	$Q_d = 0.8Q_i$
Rotational speed	$N = 1710 \text{ rpm}$	Impeller-Diffuser radial gap	1 mm

Table 1. Pump characteristics.

Test pump model and PIV measurements conditions have been already described in several papers [3-4] and main pump characteristics are given in table 1.

Two sources of fluid leakage occur:

- The first one at the impeller inlet (leakage 1, figure 6)
- The second one between the impeller outlet and the diffuser both for the hub and the shroud sides (leakages 2 and 3, figure 6).

2.2. PIV measurements

PIV measurements have been performed at different hub to shroud planes inside one diffuser channel passage for a given speed of rotation and various flow rates. For each operating condition, the PIV measurements have been triggered with different angular impeller positions (figure 3). For each angular position, several instantaneous velocities charts have been obtained, covering the space between inlet and outlet diffuser throats. This makes a rather good evaluation of phase averaged velocity charts possible. The PIV results are extracted from the thesis of G. Cavazzini, [2].

2.3. Three holes probes

A directional three holes probe has been used to make hub to shroud traverses [17]. Using a specific calibration one can get total pressure, static pressure, absolute velocity and its two components in radial and tangential direction.

In order to well represent the flow field, twenty-three probe locations are defined as it can be seen in figure 5. For each location, ten axial positions are registered ($b^* = 0.125, 0.2, 0.25, 0.375, 0.5, 0.625, 0.75, 0.875, 0.925, 0.975$ from hub to shroud). The present analysis focuses only on locations 19 to 23 along the blade to blade diffuser channel.

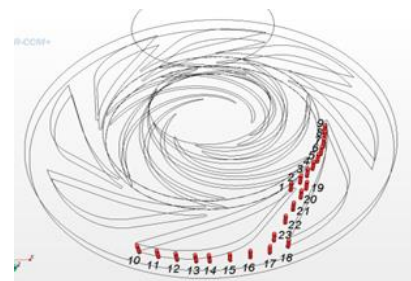
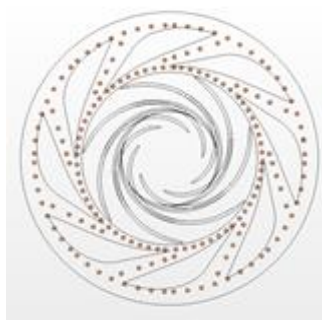
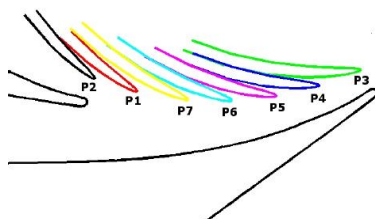


Figure 3. Impeller different angular positions relative to the diffuser vanes.

Figure 4. Probes for frozen rotor calculations.

Figure 5. Diffuser measurement locations for probe traverse and unsteady calculations.

3. Calculations

Calculations were carried out with Star CCM+ 8.06 code. The sketches of the gaps are really taken account (figure 6). A complete meshing was set up with the real geometry of the gaps and external domain far upstream the labyrinth. In this respect, boundary conditions include the relative casing motion of the model.

The calculation domain is divided into four domains:

- Inlet domain,
- Impeller domain,
- Diffuser domain,
- Exterior domain as can be seen in Figure 6.

As thickness gaps are very small (1 mm), a thin meshing model has been chosen. A thin meshing model allows thin regions in the geometry to have a prismatic type volume mesh. Using this kind of mesh improves the overall cell quality and reduces the cell amount when compared to an equivalent polyhedral type core mesh. The number of layers in the thin mesh has been set to 10. In the other parts of the domain, a polyhedral mesh with prism layers is used for all calculations (5 prism layers for a total prism layer thickness of 1 mm). The target size is 3 mm and the minimum size 0,5 mm . The size of the grid is about $18 \cdot 10^6$ cells for all the four domains.

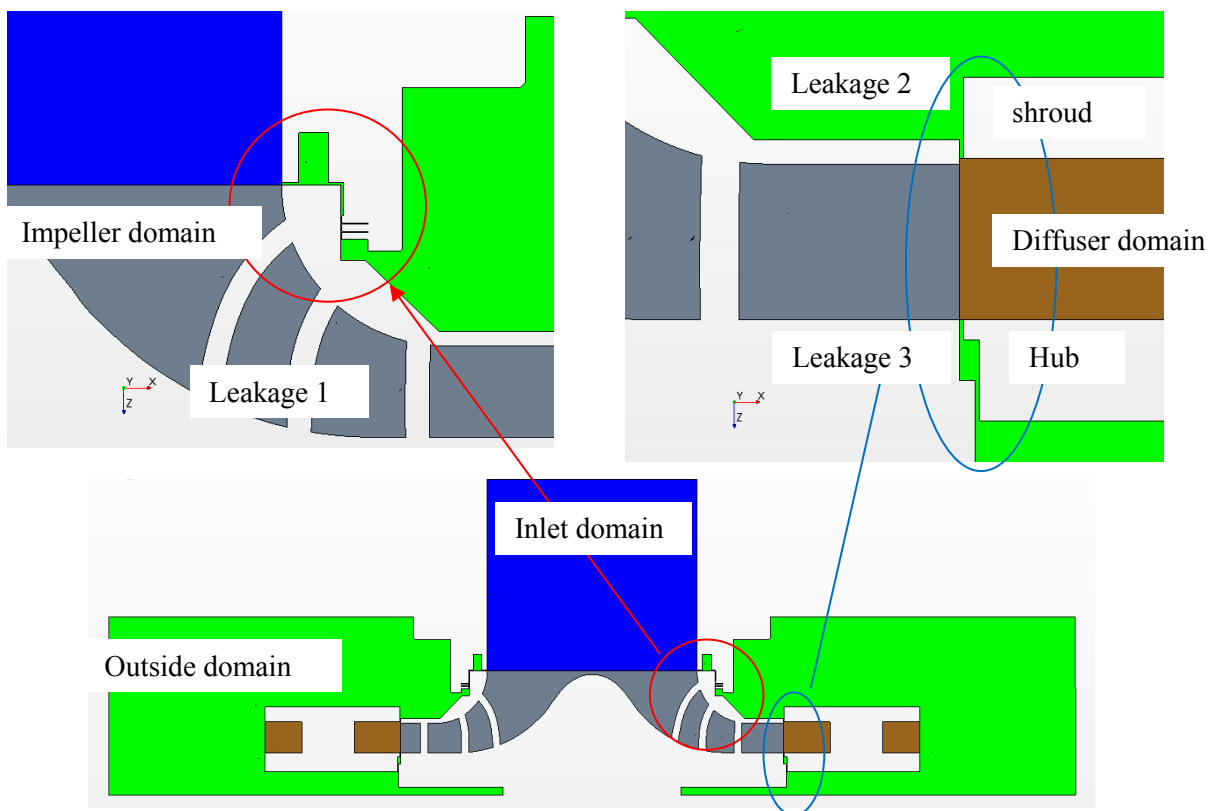


Figure 6. Regions modelled. Details of fluid leakages.

Three-dimensional incompressible Reynolds averaged Navier–Stokes equations are solved in steady (frozen rotor) and unsteady states. The SST $k-\omega$ turbulence model is used [7, 18].

The boundary condition at the inlet consisted of a mass flow rate ($Q^*=0.766; 0.973; 1.134$). The boundary condition at the outlet was the atmospheric pressure (relative pressure=0 Pa). The boundaries of the outer casing of the impeller are considered as rotating walls. The fluid (air) was considered incompressible at a constant temperature of 20°C.

For frozen rotor calculations, line probes are plotted in the whole domain of the diffuser (figure 4): each probe is duplicated seven times in order to obtain all parameters (pressure, total pressure, radial, tangential and axial velocity and velocity magnitude) for different relative positions of the diffuser comparatively to the impeller (figure 3). This is equivalent to azimuthal positions equal to $n \cdot 360 / (Z_i \cdot Z_d)$ with $n=0,1,2,3,4,5,6$ and 7 .

For unsteady calculations, point probes are plotted in the blade to blade channel of the diffuser as can be seen in figure 4.

The convergence criteria are less than $1.e-4$. The values of y^+ are below 15 in the whole computational domain.

4. Results and analysis

Let us first examine the global results: the non-dimensional static pump head, the non-dimensional isentropic pump head, the impeller efficiency, the diffuser efficiency and the pump efficiency.

These calculations show few influence of fluid leakage on global performances (figure 7). Global results of static theoretical head pump are in good agreement between one dimensional approximation using EULER equation with no inlet flow swirl and frozen rotor calculation. Unsteady calculation results, performed for the three non-dimensional flow rates, give the same level, as it can be seen in figure 7. The numerical non-dimensional isentropic pump head is higher when the fluid leakages are modelled in case of frozen rotor and in case of unsteady calculations. This leads to a decrease of impeller efficiency and pump efficiency due to fluid leakages (figure 8). It can also be noticed that the pump efficiency falls at high flow rate. The diffuser efficiency is higher at low flow rate and decrease with flow rate with and without fluid leakages for frozen rotor calculations. This is due to the fact that the diffuser is not well adapted at high flow rate. It is well adapted at $Q^*=0.766$ as can be observed in figure 8

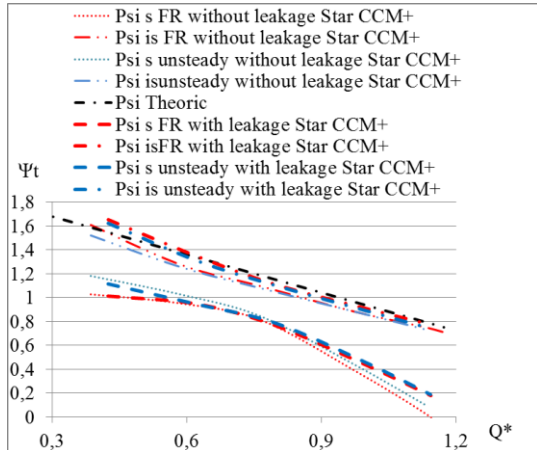


Figure 7. Performances: static and isentropic Ψ .

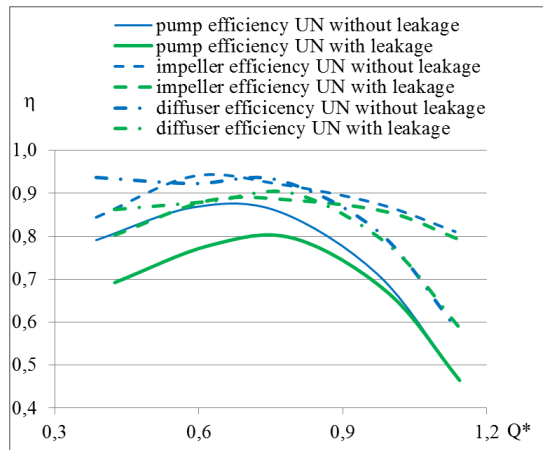


Figure 8. Impeller and pump efficiency η

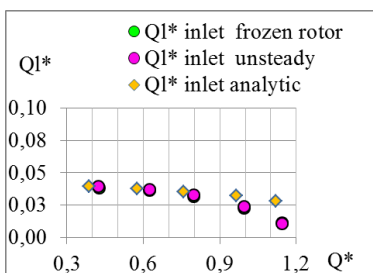


Figure 9. Fluid leakages at impeller inlet

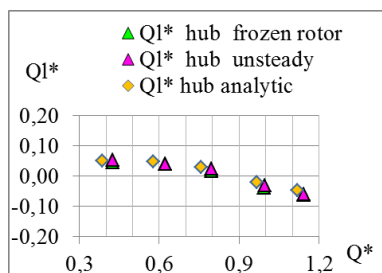


Figure 10. Fluid leakages at impeller/diffuser hub

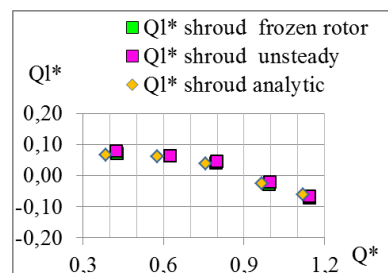
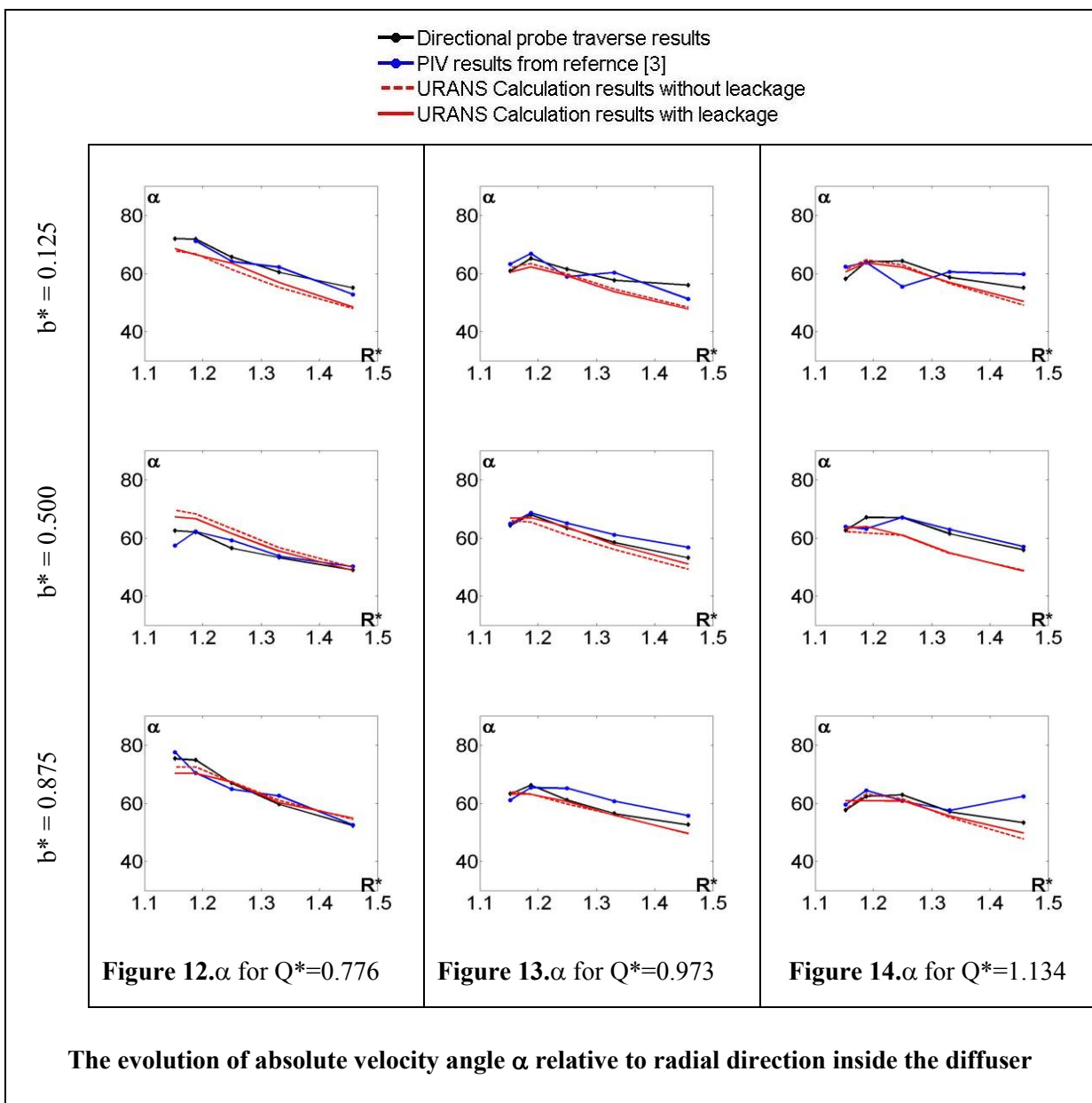


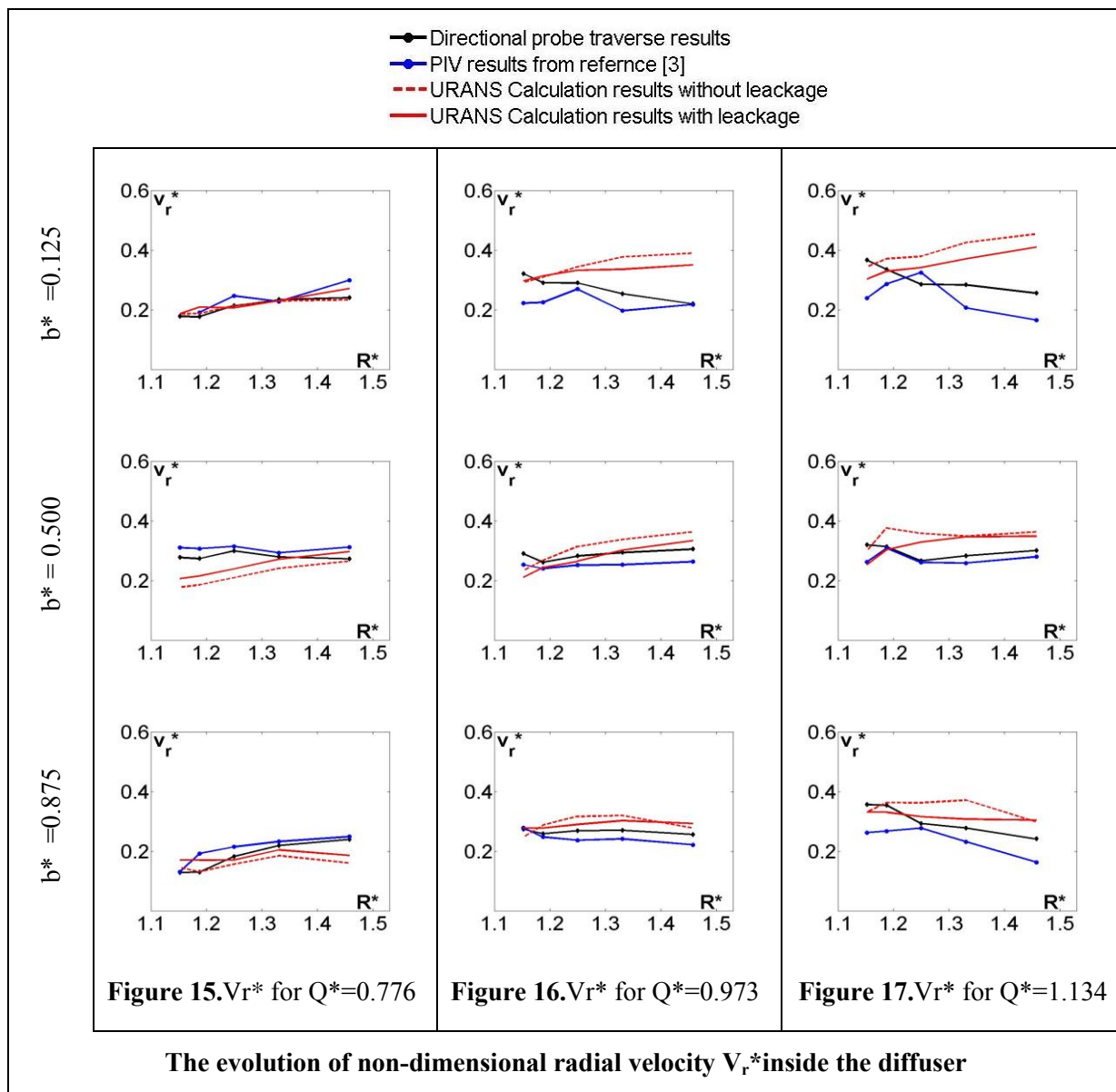
Figure 11. Fluid leakages at impeller/diffuser shroud

Fluid leakages are calculated for the three different locations: inlet (leakage 1), hub side (leakage 2) and shroud side (leakage 3) with frozen rotor and unsteady calculations. The impeller rotation effect was taken into account in the numerical solution.

Wuibaut [2] and Cherdieu [17] calculated analytical solutions, based on friction losses and localized minor losses of charge, for each leakage. The impeller rotation effect was not taken into account in this analytical solution. By writing the Bernoulli's theorem, each leakage flow rate has been calculated knowing the total difference pressure between the inlet and the outlet of the gap.

Considering the leakage at the impeller inlet, only localized losses of charge in the labyrinth are taken account [2]. For the gap between the impeller and the diffuser on the shroud side, the losses are due to the contraction and the expansion through the gap for the localized part and also due to friction on the length of the ring [17]. For the gap between the impeller and the diffuser on the hub side, Cherdieu considered that the losses are the sum of two elbows, the contraction and the expansion [17].





All results are presented in Figures 9 to 11, fluid leakage are considered positive if they income inside the domain.

As can be observed, at the inlet gap, all methods lead to quite same results. In case of Star CCM+, fluid leakages are smaller at high flow rate.

Concerning, leakages at hub and shroud sides, the amount of flow rate depends on the flow rate in the pump. At low values of Q^* , a positive leakage between impeller and diffuser was observed. At high values the tendency inverses as shown in figures 10 and 11. These tendencies were also observed in previous studies [7].

Considering fluid leakages flow rates, the analytical results seem to be sufficient enough to predict these flow rates as also shown by Khelladi et al [19]. So new calculations, without external domain but with fluid leakages flow rates based on analytical model, can be used to compare local numerical results and experimental results.

Local absolute velocity angle relative to radial direction and non-dimensional radial velocity are plotted in figures 12 to 17 for the three flow rates.

The examination of the evolution of the absolute velocity angle relative to radial direction for the two numerical calculations, for the PIV measurements and for the three holes measurements show similar results (figures 12 to 14). There is no real influence of taken account the fluid leakages on the evolution of the angles.

The examination of radial velocity (figures 15 to 17) shows that fluid leakages have a real influence for $Q^*=0.776$ and $Q^*=0.973$. For $Q^*=1.173$, numerical results with fluid leakages are better than those without leakage, but some differences still remain with experimental results in particular flow at low values of b^* .

5. Conclusion

In this paper, the SHF pump was studied numerically and experimentally. The computational models with and without gaps (between the impeller, the fixed inlet domain and the fixed diffuser domain) were set up for frozen rotor and unsteady solutions in order to determine the fluid leakages and to make comparisons with experimental results. A one dimensional loss model was also used to calculate the fluid leakages flow rates. The effects of the gaps on the calculated flow field were analysed. Local velocity components evolutions in the diffuser blade to blade channel have been calculated and analysed taking the leakage effects into account.

It has been found that the amount of fluid leakages corresponds to the one dimensional model, even if the effect of rotating wall wasn't considered in this model. This result is very interesting knowing that the model with gaps is more consuming in grid size and in computational time than the case without gaps.

It has been shown that leakages may affect the local flow characteristics depending on volume flow rates at the impeller inlet. The calculations show little influence of fluid leakage on the global performance but present a real improvement concerning velocity distributions. The local fields of velocities were analysed inside the blade to blade channel using the numerical results, the PIV measurements and the three holes probes. These results show that leakage is an important parameter that has to be taken into account in order to make improved comparisons between numerical approaches and experiments.

The comparison of pump performances between the calculations and the measurements showed a favourable tendency.

Nomenclature

b		[m]	Distance from hub
b^*	b/B	[-]	Non-dimensional distance from hub
B		[m]	Blade height
C		[mN]	Impeller torque
dp_s	$P_s - p_{s1}$	[Pa]	Static difference pressure
dp_t	$p_t - p_{t1}$	[Pa]	Total difference pressure
dp_{ti}	$p_{t2} - p_{t1}$	[Pa]	Impeller total difference pressure
dp_{tp}	$p_{t4} - p_{t1}$	[Pa]	Pump total difference pressure
N		[rpm]	Rotational speed
p_s		[Pa]	Static pressure
p_t		[Pa]	Total pressure
Q^*	Q/Q_i	[m ³ /s]	Non-dimensional volume flow rate at impeller's inlet
Q_d		[m ³ /s]	Diffuser design flow rate
Q_i		[m ³ /s]	Impeller design flow rate
Q_l^*	Q_l/Q_i	[-]	non-dimensional flow rates of fluid leakage
R		[m]	Radius
R^*	R/R_2	[-]	Non-dimensional radius

V_r		[m/s]	Radial velocity
V_r^*	V_r/U_2	[-]	Non-dimensional radial velocity
V_u		[m/s]	Tangential velocity
V_u^*	V_u/U_2	[-]	Non-dimensional tangential velocity
U_2	$\Omega * R_2$	[m/s]	Frame velocity at blade's impeller outlet
Z_d		[-]	Number of diffuser blades
Z_i		[-]	Number of impeller blades
η_p	Ψ_{ip}/Ψ_i	[-]	Pump efficiency
η_i	Ψ_{ii}/Ψ_i	[-]	Impeller efficiency
η_d	η_p/η_i	[-]	Diffuser efficiency
α	$Arctg(V_r/V_u)$	[°]	Absolute velocity angle relative to radial direction
ρ		[kg/m ³]	Air density
Ω	$\pi N/30$	[rad/s]	Angular Velocity
Ψ_i	$C\Omega/(\rho Q U_2^2/2)$	[-]	Non-dimensional isentropic head
Ψ_s	$dp_s/(\rho U_2^2/2)$	[-]	Non-dimensional static pump head
Ψ_{ip}	$dp_{ii}/(\rho U_2^2/2)$	[-]	Non-dimensional total impeller head
Ψ_{ii}	$dp_{ip}/(\rho U_2^2/2)$	[-]	Non-dimensional total pump head

Index

d	Diffuser
i	Impeller
p	Pump
0	Domain inlet
1	Impeller inlet
2	Blade's Impeller outlet
2'	Impeller outlet
3	Blade's diffuser inlet
4	Blade's diffuser outlet

References

- [1] Wuibaut G., Dupont P., Caignaert G., Stanislas M. 2000 Experimental analysis of velocities in the outlet part of a radial flow pump impeller and the vaneless diffuser using particle image velocimetry *Proceedings of the XX IAHR Symposium* (Charlotte USA) 6-9 august, paper GU-03.
- [2] Wuibaut G. 2001 *Etude par vélocimétrie par images de particules des interactions roue-diffuseur dans une pompe centrifuge* PhD thesis, Thèse de Doctorat Ensam
- [3] Cavazzini G. 2006 *Experimental and numerical investigation of the rotor-stator interaction in radial turbomachines*, Ph.D. thesis, University of Padova, (Padova, Italy)
- [4] Cavazzini G., Pavesi G., Ardizzone G., Dupont P., Coudert S., Caignaert G., Bois G. 2009 Analysis of the rotor-stator interaction in a radial flow pump *Houille blanche – Revue internationale de l'eau* p. 141-151
- [5] Cavazzini G., Dupont P., Pavesi G., Dazin A., G. Bois, Atif A., Cherdieu P. 2011 Analysis of unsteady flow velocity fields inside the impeller of a radial flow pump : PIV measurements and numerical calculation comparisons *Proc. of ASME-JSME-HSME Joint fluids engineering conference* July 24-29, (Hamamatsu, Japan)
- [6] Cherdieu P., Dupont P., Bayeul-lainé A.C., Dazin A., Bois G., 2013 Data reduction problems using a 3 - hole directional pressure probe to investigate mean flow characteristics in the vaneless gap between impeller and diffuser radial pump, *IOP Conference Series Earth and Environmental Science* **09**/2013; 52(topic 2).

- [7] Bayeul-Lainé A.C., Dupont P., Cavazzini G., Cherdieu P., Dazin A., Bois G., Roussette O., 2013 Numerical and experimental investigations in a vane diffuser of SHF impeller : fluid leakage effect *21^{ème} Congrès Français de Mécanique* (Bordeaux) 26-30 août
- [8] Bayeul-Lainé A.C., Dupont P. , Miccoli L., Cavazzini G., Dazin A., Pavesi G., Bois G. 2014 Fluid leakage effect on analysis of a vane diffuser of SHF pump, *15th International Symposium on Transport Phenomena and Dynamics of Rotating Machinery, ISROMAC-15*, (Honolulu, Hawaii, USA); 02/2014
- [9] Adamczyk J. J., Celestina M. L., Chen J. P. 1994 Wake induced unsteady flows :their impact on rotor performance and wake rectification *ASME International Gas Turbine and Aeroengine Congress and Exposition* (The Hague, Netherlands), June 13-16, **paper 94GT219**.
- [10] Arndt N., Acosta A.J., Brennen C.E., Caughey T.K 1990 - Experimental Investigation of Rotor – Stator Interaction in a Centrifugal Pump With Several Vane Diffusers *ASME Journal of Turbomachinery* **Vol. 112** p. 98-108.
- [11] Eisele K., Zhang Z., Casey M. V., Gülich J., Schachenmann A. 1997 Flow analysis in a Pump Diffuser Part 1 : LDA and PTV Measurements of the Unsteady Flow *Transactions of ASME, Journal of Fluids Engineering* **Vol. 119** p. 968-977
- [12] Culver R., Liu F. 2009 Plane Method for Flutter Computation in Multi-stage Turbomachines *47th AIAA Aerospace Sciences Meeting Including The New Horizons Forum and Aerospace Exposition* January 5-8, (Orlando, Florida)
- [13] Petit O., Nilsson H. 2013 Numerical Investigations of Unsteady Flow in a Centrifugal Pump with a vane Diffuser *International Journal of Rotating Machinery*, **Vol. 2013**, Article ID 961580, 14 pages
- [14] Tamm A., Gugau M., Stoffel B. 2002 Experimental and 3-D Numerical Analysis of the Flow Field in Turbomachines- Part I *International Congress on Quality Assessment of Numerical Simulations in Engineering* (Conception – Chile)
- [15] Dazin A., CoutierDelgosha O., Dupont P., Coudert S., Caignaert G., Bois G., 2008 Rotating Instability in the Vaneless Diffuser of a Radial Flow Pump *Journal of Thermal Science* **17** (4) 368-374
- [16] Dazin A., Cavazzini G., Pavesi G., Dupont P., Coudert S., Ardizzone G., Caignaert G., Bois G. 2011 High-speed stereoscopic PIV study of rotating instabilities in a radial vaneless diffuser *Exp Fluids* **51**(1) 83-93
- [17] Cherdieu P. 2014 *Contrôle du décollement dans un diffuseur àubes de turbomachine centrifuge* PhD thesis, Thèse de Doctorat
- [18] Menter, F. R. and Kuntz, M. 2002. Adaptation of Eddy Viscosity Turbulence Models to Unsteady Separated Flows Behind Vehicles in *The Aerodynamics of Heavy Vehicles: Trucks, Buses and Trains* Springer Asilomar CA.
- [19] Khelladi S., Sarraf C, Bakir F., Rey R. 2010 Study of a high rotational speed shrouded centrifugal, fan: aerodynamics and effects of a shroud-associated *Proceedings of the Institution of Mechanical Engineers Part A Journal of Power and Energy*, 01/2010; **224**(5):691-700. DOI:10.1243/09576509JPE899